

Abbreviations

AP	ACCESS PANEL
AL	ALUMINIUM
AV	AUDIO-VISUAL
BD	BOARD
BJ	BUTT JOINT
BK	BLOCK
CBJ	CORNER BUTT JOINT
CL	CEILING LEVEL
CHS	CIRCULAR HOLLOW SECTION
CJ	CONTROL JOINT
COF	CONCRETE OFF-FORM
CONC	CONCRETE
CST	CONCRETE STEEL TROWEL
DP	DOWNSPIPE
DPC	DAMP PROOF COURSE
DB	DISTRIBUTION BOARD
EXST	EXISTING
EXL	EXISTING LEVEL
EJ	EXPANSION JOINT
FFL	FINISHED FLOOR LEVEL
FW	FLOOR WASTE
G	GLASS
GL	GROUND LEVEL
LV	LOUVRE
NGL	NATURAL GROUND LEVEL
MC	METAL CLADDING
MSB	MAIN SWITCH BOARD
OPP	OPPOSITE
PLY	PLYWOOD
RWH	RAIN WATER HEAD
RL	REDUCED LEVEL
RHS	RECTANGULAR HOLLOW SECTION
RC	REINFORCED CONCRETE
SIM	SIMILAR
SS	STAINLESS STEEL
SSL	STRUCTURAL SLAB LEVEL
T.O.R	TOP OF ROOF
T.O.S	TOP OF STEEL
TYP.	TYPICAL
U/S	UNDERSIDE
WC	WATER CLOSET

Electrical Legend

	Single Socket Outlet (220V)
	Single Pole Switch
	(2) Single Pole Switches
	Two-way Pole Switch
	Ceiling Mounted Light Fixture w/ 100W Compact Fluorescent Light Bulb
	Panel Box

Symbols

	RELATIVE LEVEL MARKER
	DOOR NUMBER
	SECTION MARK
	ELEVATION MARK
	DETAIL ELEVATION MARK
	ROOM NAME & NUMBER
	CEILING TAG

Architectural Notes

1. These drawings are to be read in conjunction with all other drawings, specifications and bill of quantities.
2. The contractor must verify all Dimensions and existing levels on site prior to commencement of works. Any discrepancies to be reported to the Division of Educational Facilities, the Principal or contractually designated representatives.
3. Use figured dimensions only, do not scale from drawings, any discrepancies in dimensions are to be reported to the Division of Educational Facilities.
4. The contractor will inspect the site prior to tender and notify the owner of any site conditions that will affect construction **prior** to commencement of any work.
5. Dimensions, levels, locations and set-out indicated on the Contract Drawings shall not be changed without approval.
6. The Contractor shall maintain site boundary pegs and temporary bench marks in good condition and correct positions until the set-out of the Work under the Contract, including external work, is certified correct.

7. The Contractor is liable for and shall indemnify the Principal against any loss, claim or proceedings in respect of any encroachments by the Work under the Contract on or over the site boundaries.

Table of Contents

A000	Title Sheet
A001	Table of Contents & General Notes
A020	Schedules
A060	Site Plan
A100	Typ. Classroom Block - Foundation Plan
A101	Typ. Classroom Block - Floor Plan
A102	Typ. Classroom Block - Roof Framing Plan
A105	Typ. Classroom Block - Exterior Elevations
A106	Typ. Classroom Block - Sections
A110	Admin. Block - Foundation Plan
A111	Admin. Block - Floor Plan
A112	Admin. Block - Roof Framing Plan
A115	Admin. Block - Exterior Elevations
A116	Admin Block - Section
A150	Typ. Classroom & Admin Block - Details
A151	Typ. Classroom & Admin Block - Details
A152	Typ. Classroom & Admin Block - Details
A200	Latrine - Plans & Elevations
A300	Well - Plan & Section
E101	Typ. Classroom Block - Electrical Plan
E111	Admin Block - Electrical Plan

Civil Notes

- Siteworks**
1. All trench backfill material to be compacted to the same density as the adjacent material.
 2. The contractor is to make provision for the effective diversion and removal of all surface water from and adjacent to the prepared sub-grade from any source.
 3. The contractor is to make provisions to prevent water ingress into open excavations.
 4. Protect all stockpiles of material from scour & erosion. Do not stockpile loose material in roadways, near drainage pits, or in water courses.
- Earthworks & Ground Preparation**
1. Place approved fill or crushed rock in 6 inch max. layers and compact to 98% maximum standard dry density.
 2. During wet weather construct temporary cut off drains around the perimeter of all building and pavement benches to drain the subgrade & direct surface water away from the subgrade.

Electrical Notes
Need to write electrical notes

NOT FOR CONSTRUCTION

7-Classroom Primary School
Division of Educational Facilities
Ministry of Education Republic of Liberia

November 31, 2009

SHEET TITLE
Table of Contents & General Notes
SCALE
SEE NOTED

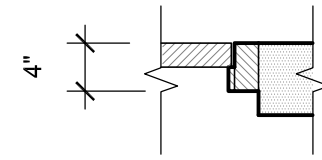
DRAWING NO.
A001

FINISH SCHEDULE

Room Number	Building	Room Name	Floor Finish	Wall Finish				Ceiling Finish	Notes
				North	East	South	West		
001	Classroom Block A	Classroom	Conc	BLCK	BLCK	BLCK	BLCK	Ply	10'-0" Blackboard on one (1) wall
002	Classroom Block A	Classroom	Conc	BLCK	BLCK	BLCK	BLCK	Ply	10'-0" Blackboard on one (1) wall
003	Classroom Block A	Classroom	Conc	BLCK	BLCK	BLCK	BLCK	Ply	10'-0" Blackboard on one (1) wall
004	Classroom Block B	Classroom	Conc	BLCK	BLCK	BLCK	BLCK	Ply	10'-0" Blackboard on one (1) wall
005	Classroom Block B	Classroom	Conc	BLCK	BLCK	BLCK	BLCK	Ply	10'-0" Blackboard on one (1) wall
006	Classroom Block B	Classroom	Conc	BLCK	BLCK	BLCK	BLCK	Ply	10'-0" Blackboard on one (1) wall
010	Administrative Block	Classroom	Conc	BLCK	BLCK	BLCK	BLCK	Ply	10'-0" Blackboard on one (1) wall
011	Administrative Block	Classroom	Conc	BLCK	BLCK	BLCK	BLCK	Ply	
012	Administrative Block	Classroom	Conc	BLCK	BLCK	BLCK	BLCK	Ply	
013	Administrative Block	Classroom	Conc	BLCK	BLCK	BLCK	BLCK	Ply	
014	Administrative Block	Classroom	Conc	BLCK	BLCK	BLCK	BLCK	Ply	
020 - 023	Latrine A	Latrines	Conc	BLCK	BLCK	BLCK	BLCK	-	
024 - 027	Latrine B	Latrines	Conc	BLCK	BLCK	BLCK	BLCK	-	

LEGEND

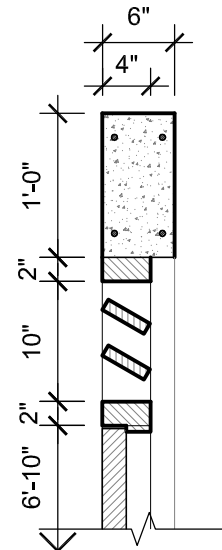
- BLCK EXPOSED STABILIZED EARTH BLOCK
- CONC STEEL TROWEL CONCRETE WITH SMOOTH FINISH
- PLY 1/2" TREATED PLY PAINT FINISH
- PL 1/2" THICK INTERNAL SMOOTH PLASTER



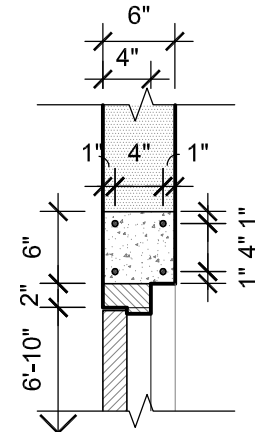
DOOR / WINDOW SCHEDULE

Type	Description	Door Size		Door Type	Frame Size		Frame Material	Lock	Notes
		Width (A)	Height (B)		Width (W)	Height (H)			
D-1	Classrm / Office Door	2'-11 1/2"	6'-9 1/2"	Batten	3'-4"	8'-0"	Timber	Bolt/Pad	Vented transom above
D-2	Storage Rm Door	2'-11 1/2"	6'-9 1/2"	Batten	3'-4"	7'-0"	Timber	Bolt/Pad	
D-3	Latrine Door	2'-7 1/2"	6'-9 1/2"	Batten	3'-0"	7'-0"	Timber	Bolt/Pad	
W-1	Shutter Window	1'-3 1/2"	3'-7 1/2"	Batten	3'-0"	5'-0"	Timber	Bolt	2 Shutters Total per Window / Vented transom above
W-2	X Shutter Window	1'-4"	3'-7 1/2"	Batten	6'-0"	5'-0"	Timber	Bolt	4 Shutters Total per Window / Vented transom above

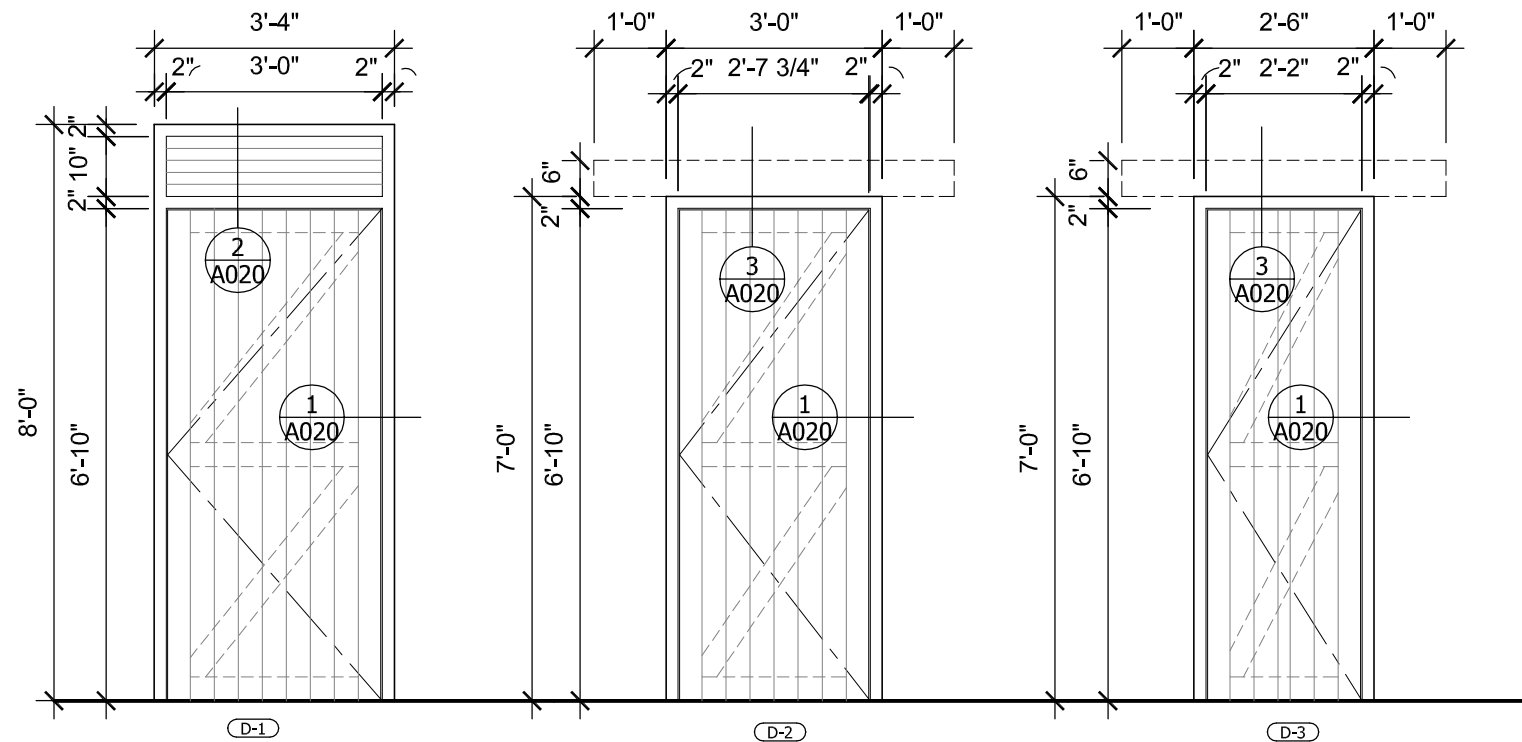
2 Transom Dtl
scale: 3/4" = 1'-0"



1 Jamb Dtl
scale: 3/4" = 1'-0"



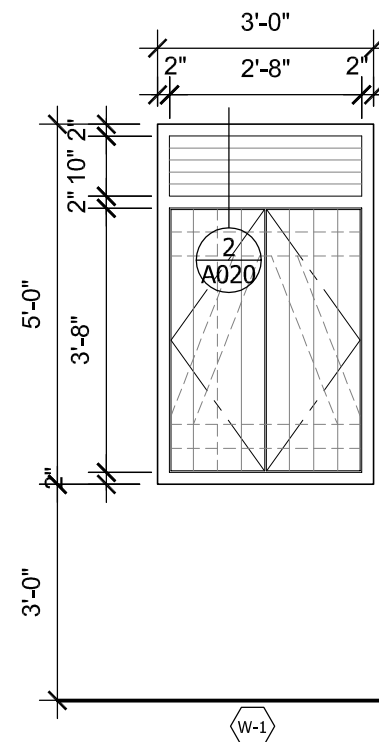
3 Lintel Dtl
scale: 3/4" = 1'-0"



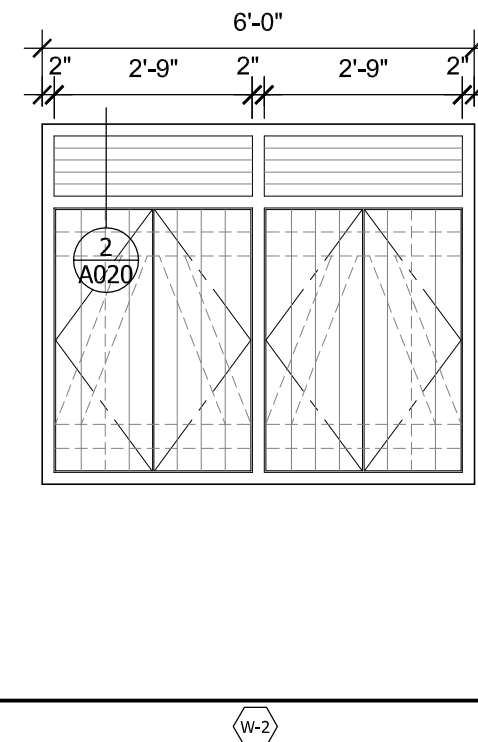
D-1
Frame: 2"x4" Frame all around grouted into walls.
Door: 4"x1" Boarding on 4"x2" frame all around with ex 4"x2" ledge and ex 4"x2" bracing.
Hardware: (3) 12" T-Hinges screwed into door and frame; (1) Sliding lock with keyed padlock; (1) 6" Stl. Door Pull each side for a total of (2) Stl Door Pulls.
Transom: Vented transom above door, with (3) - 4"x1" slats at every 3" max.

D-2
Frame: 2"x4" Frame all around grouted into walls.
Door: 4"x1" Boarding on 4"x2" frame all around with ex 4"x2" ledge and ex 4"x2" bracing.
Hardware: (3) 12" T-Hinges screwed into door and frame; (1) Sliding lock with keyed padlock; (1) 6" Stl. Door Pull each side for a total of (2) Stl Door Pulls.
Lintel: 6"x6" Concrete lintel with (4) - 3/8" steel reinforcing. Extend 12" past door frame each side.

D-3
Frame: 2"x4" Frame all around grouted into walls.
Door: 4"x1" Boarding on 4"x2" frame all around with ex 4"x2" ledge and ex 4"x2" bracing.
Hardware: (3) 12" T-Hinges screwed into door and frame; (1) Sliding lock with keyed padlock; (1) 6" Stl. Door Pull each side for a total of (2) Stl Door Pulls.
Lintel: 6"x6" Concrete lintel with (4) - 3/8" steel reinforcing. Extend 12" past door frame each side.

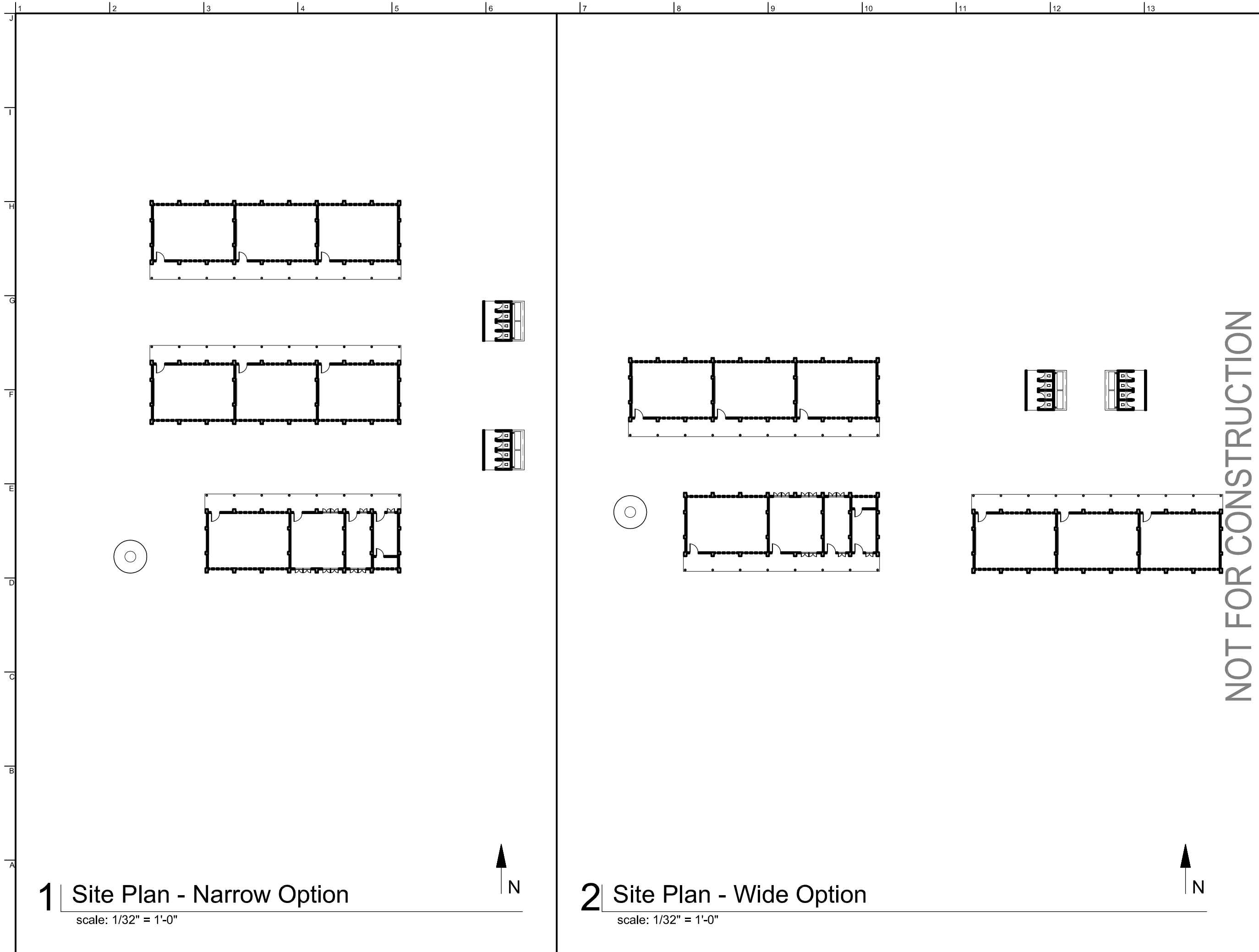


W-1
Frame: 2"x4" Frame all around grouted into walls.
Shutter: 4"x1" Boarding on 4"x2" frame all around with ex 4"x2" ledge and ex 4"x2" bracing.
Hardware: (2) Pairs of 12" T-Hinges with (2) 6" bolts
Transom: Vented transom above window, with (3) - 4"x1" slats at every 3" max.



W-2
Frame: 2"x4" Frame all around grouted into walls.
Shutter: 4"x1" Boarding on 4"x2" frame all around with ex 4"x2" ledge and ex 4"x2" bracing.
Hardware: (4) Pairs of 12" T-Hinges with (4) 6" bolts
Transom: Vented transom above window, with (3) - 4"x1" slats at every 3" max.

NOT FOR CONSTRUCTION



1 Site Plan - Narrow Option
 scale: 1/32" = 1'-0"

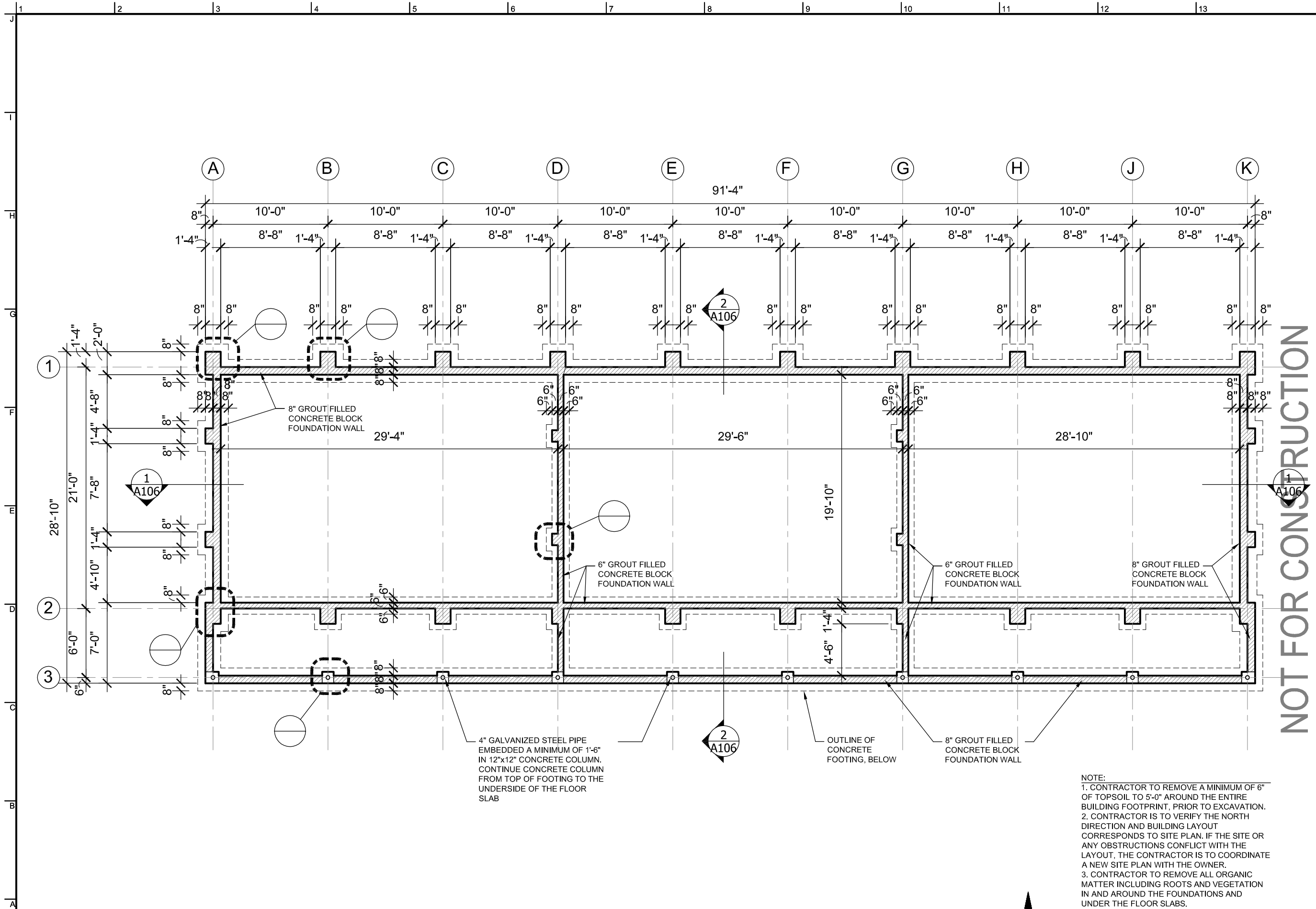
2 Site Plan - Wide Option
 scale: 1/32" = 1'-0"

NOT FOR CONSTRUCTION

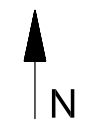
7-Classroom Primary School
 Division of Educational Facilities
 Ministry of Education Republic of Liberia

SHEET TITLE
Site Plan
 SCALE
 SEE NOTED
 DRAWING NO.
A060

November 31, 2009

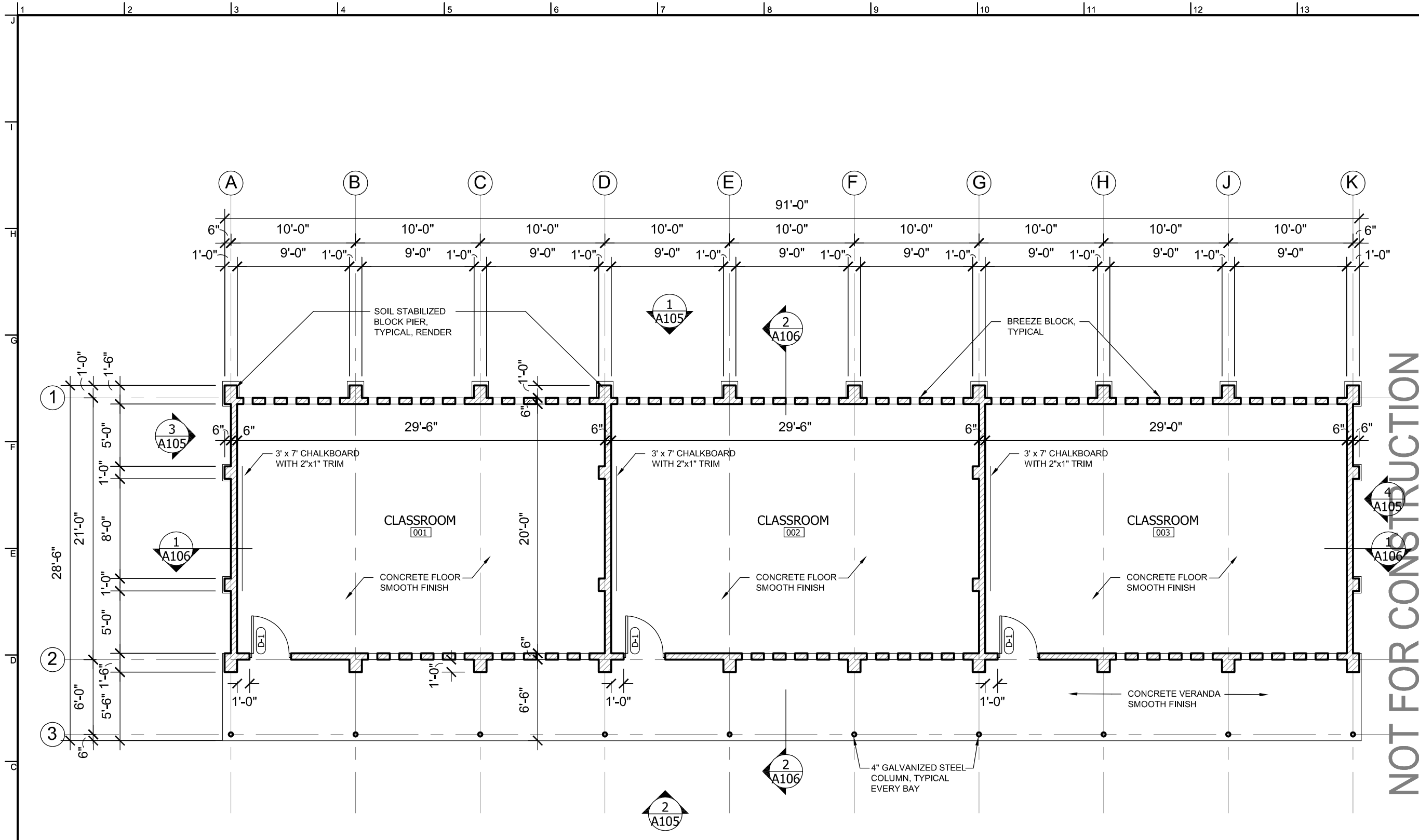


1 Foundation Plan - Typ. Classroom Block
 scale: 1/8" = 1'-0"



NOTE:
 1. CONTRACTOR TO REMOVE A MINIMUM OF 6" OF TOPSOIL TO 5'-0" AROUND THE ENTIRE BUILDING FOOTPRINT, PRIOR TO EXCAVATION.
 2. CONTRACTOR IS TO VERIFY THE NORTH DIRECTION AND BUILDING LAYOUT CORRESPONDS TO SITE PLAN. IF THE SITE OR ANY OBSTRUCTIONS CONFLICT WITH THE LAYOUT, THE CONTRACTOR IS TO COORDINATE A NEW SITE PLAN WITH THE OWNER.
 3. CONTRACTOR TO REMOVE ALL ORGANIC MATTER INCLUDING ROOTS AND VEGETATION IN AND AROUND THE FOUNDATIONS AND UNDER THE FLOOR SLABS.
 3. ALL EXTERIOR FOUNDATION WALLS ARE TO BE 8" GROUT FILLED CONCRETE BLOCKS. INTERIOR FOUNDATION WALLS MAY BE 6" GROUT FILLED CONCRETE BLOCKS, AS NOTED.
 4. CONTRACTOR IS TO BACKFILL WITH APPROVED LATERITIC SOIL ONLY AND THEN COMPACT PRIOR TO SAND SUB-BASE AND CONCRETE FLOOR SLAB.

NOT FOR CONSTRUCTION

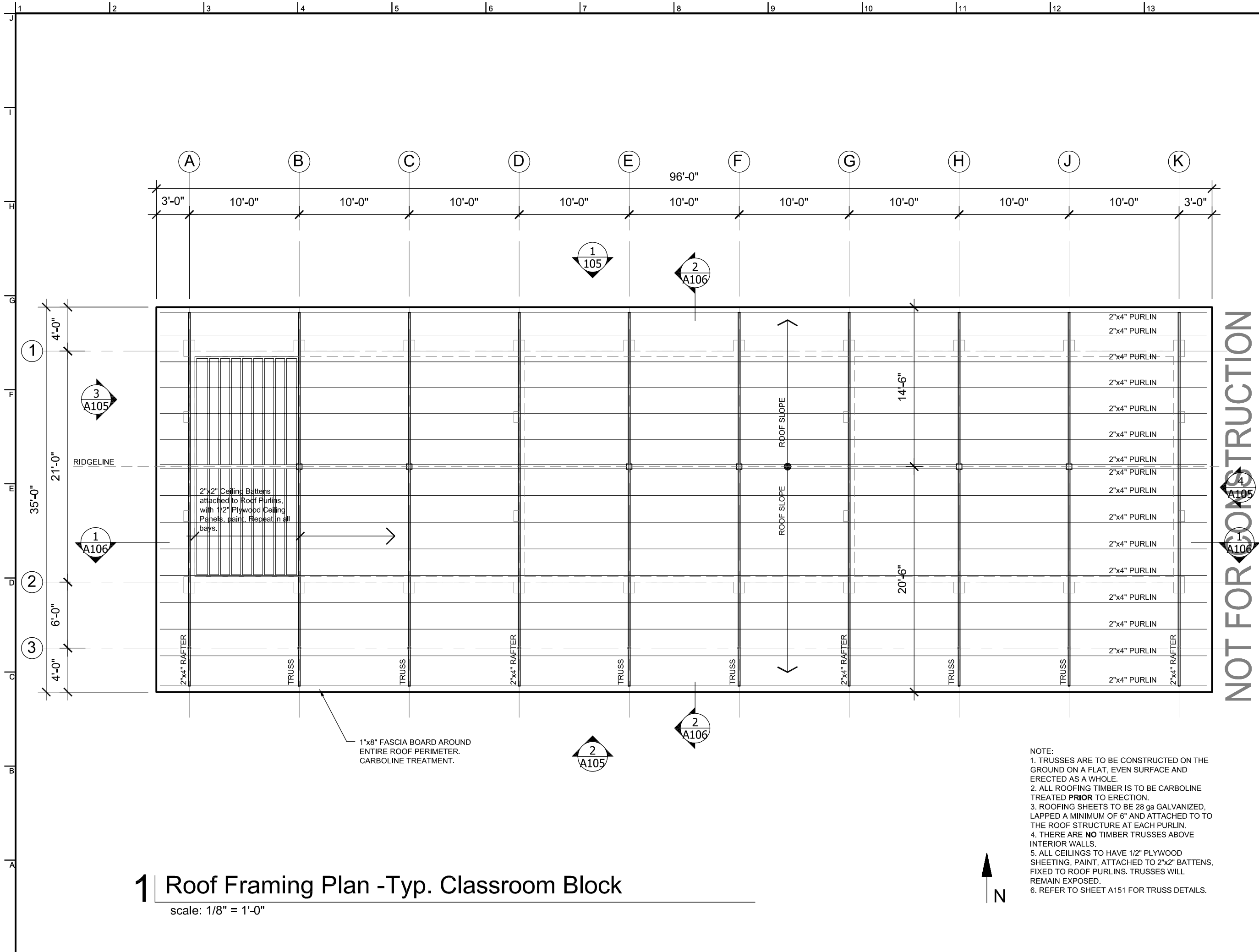


1 Floor Plan - Typ. Classroom Block
 scale: 1/8" = 1'-0"

NOTE:
 1. ALL WALLS TO BE 6" x 6" x 12" SOIL STABILIZED BLOCK UNLESS OTHERWISE NOTED
 2. ALL FLOORS TO BE CONCRETE WITH SMOOTH TROWELED FINISH.
 3. REFER TO DETAIL 1/A150 FOR AXON DRAWING OF BUILDING CONSTRUCTION.
 4. CONTRACTOR TO VERIFY WITH OWNER BEFORE MAKING ANY MODIFICATIONS TO THE DRAWINGS, INCLUDING STEPPING THE BUILDING TO MATCH SITE CONTOURS. CONTRACTOR IS TO PROPOSE ALL MODIFICATION AND DETAILS PRIOR TO COMPLETING WORK.



NOT FOR CONSTRUCTION

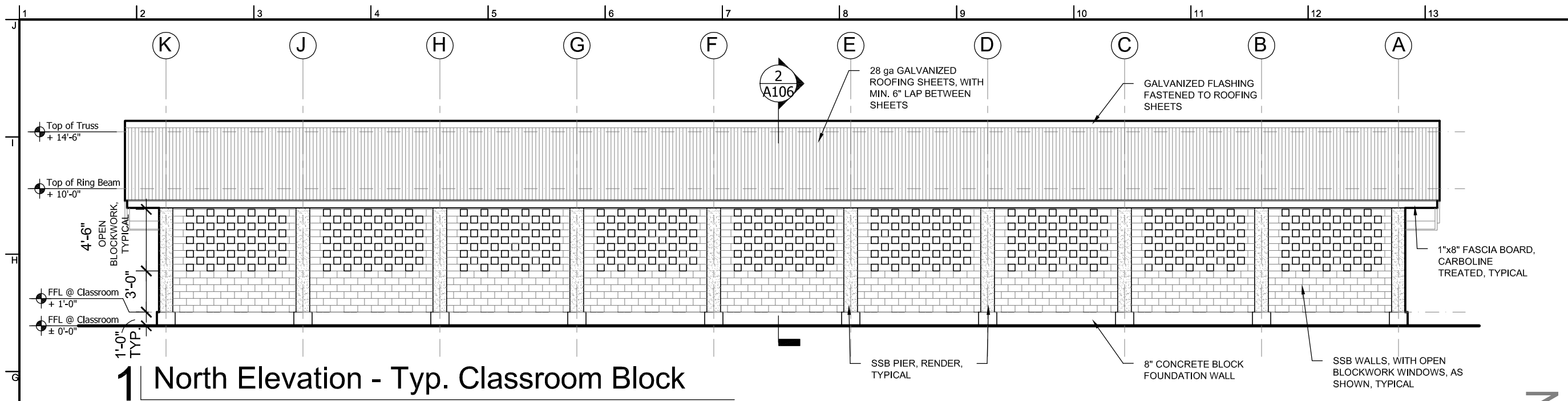


1 Roof Framing Plan -Typ. Classroom Block
 scale: 1/8" = 1'-0"

NOTE:
 1. TRUSSES ARE TO BE CONSTRUCTED ON THE GROUND ON A FLAT, EVEN SURFACE AND ERECTED AS A WHOLE.
 2. ALL ROOFING TIMBER IS TO BE CARBOLINE TREATED **PRIOR** TO ERECTION.
 3. ROOFING SHEETS TO BE 28 ga GALVANIZED, LAPPED A MINIMUM OF 6" AND ATTACHED TO TO THE ROOF STRUCTURE AT EACH PURLIN.
 4. THERE ARE **NO** TIMBER TRUSSES ABOVE INTERIOR WALLS.
 5. ALL CEILINGS TO HAVE 1/2" PLYWOOD SHEETING, PAINT, ATTACHED TO 2"x2" BATTENS, FIXED TO ROOF PURLINS. TRUSSES WILL REMAIN EXPOSED.
 6. REFER TO SHEET A151 FOR TRUSS DETAILS.

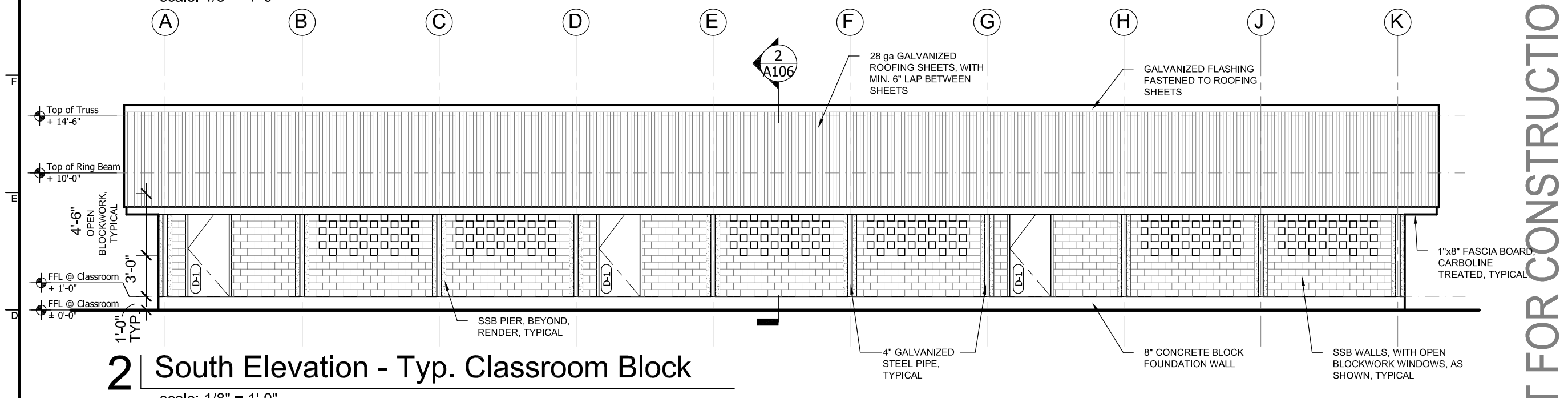


NOT FOR CONSTRUCTION



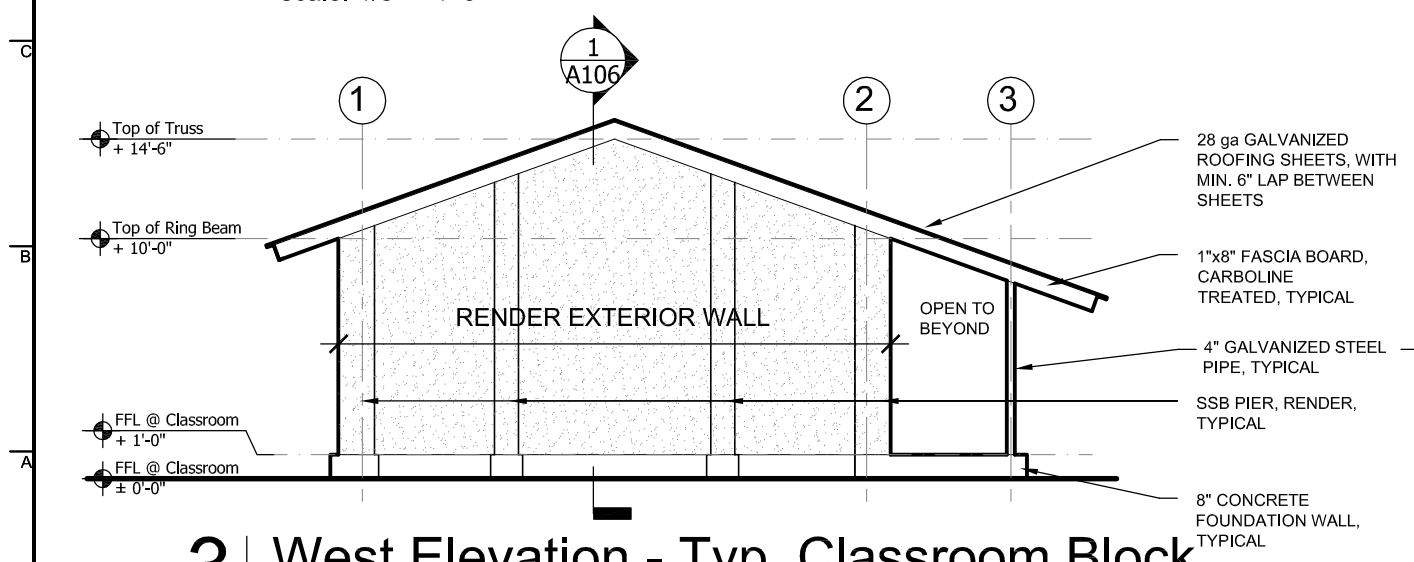
1 North Elevation - Typ. Classroom Block

scale: 1/8" = 1'-0"



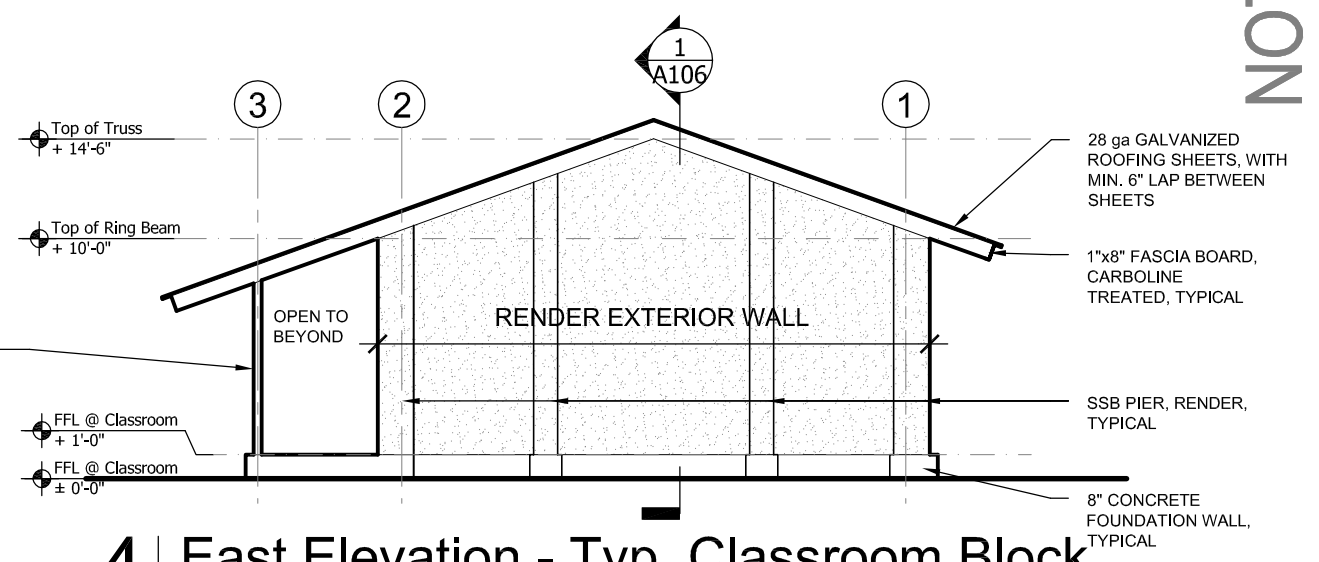
2 South Elevation - Typ. Classroom Block

scale: 1/8" = 1'-0"



3 West Elevation - Typ. Classroom Block

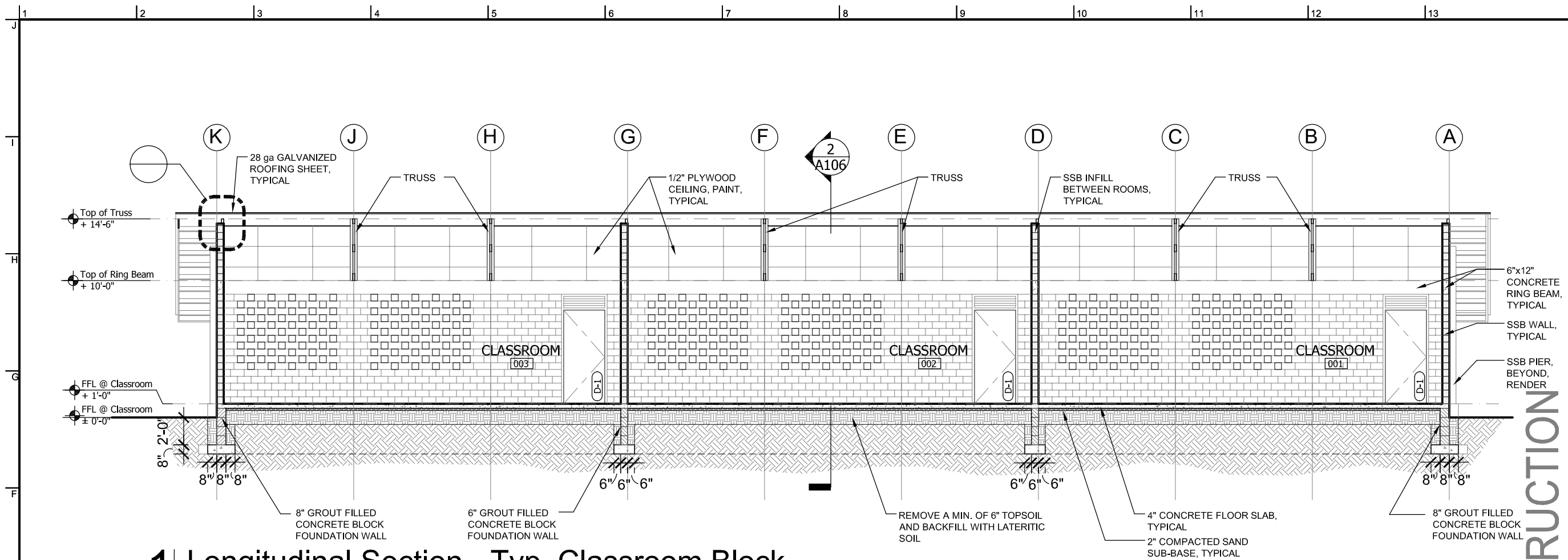
scale: 1/8" = 1'-0"



4 East Elevation - Typ. Classroom Block

scale: 1/8" = 1'-0"

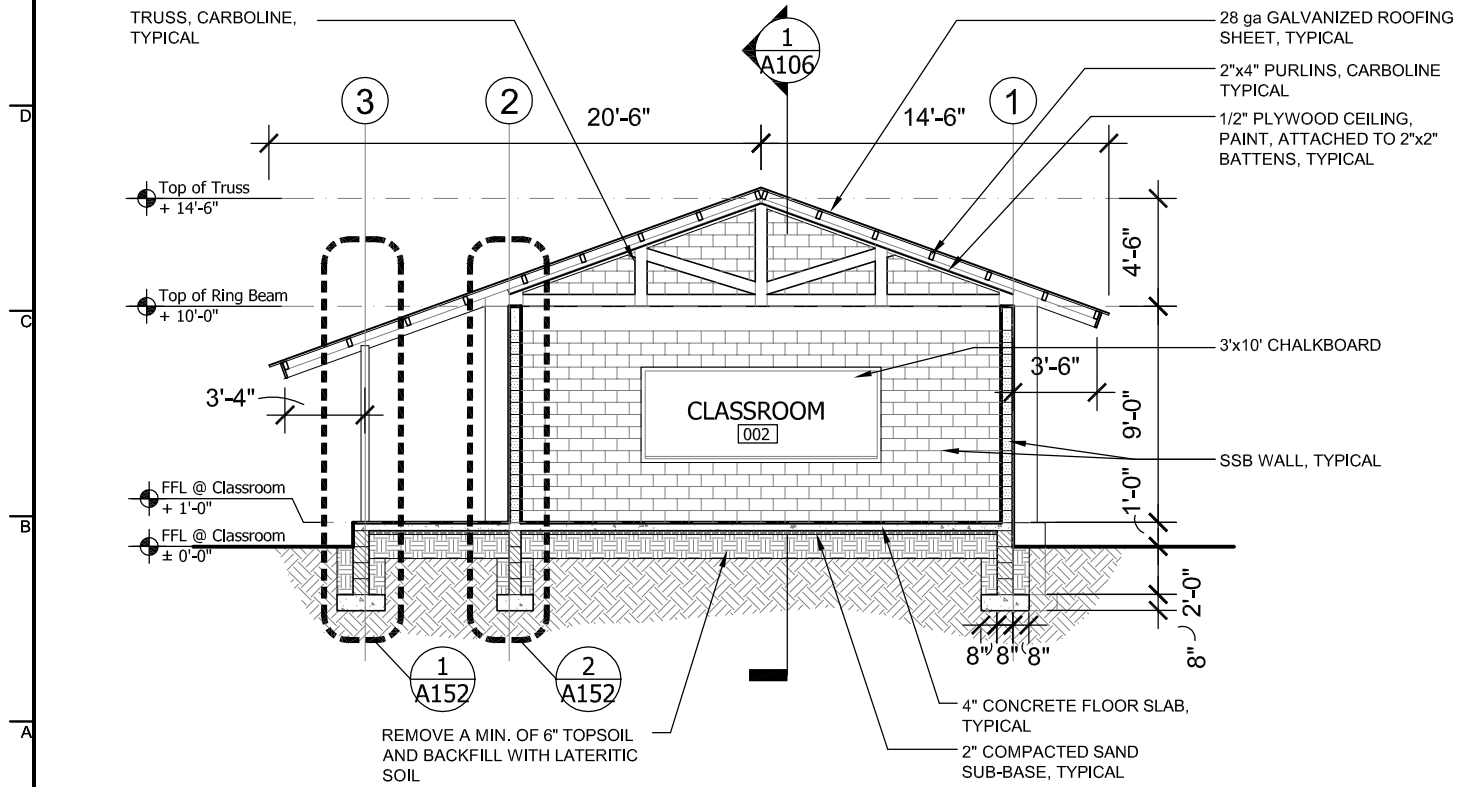
NOT FOR CONSTRUCTION



1 Longitudinal Section - Typ. Classroom Block

scale: 1/8" = 1'-0"

NOT FOR CONSTRUCTION

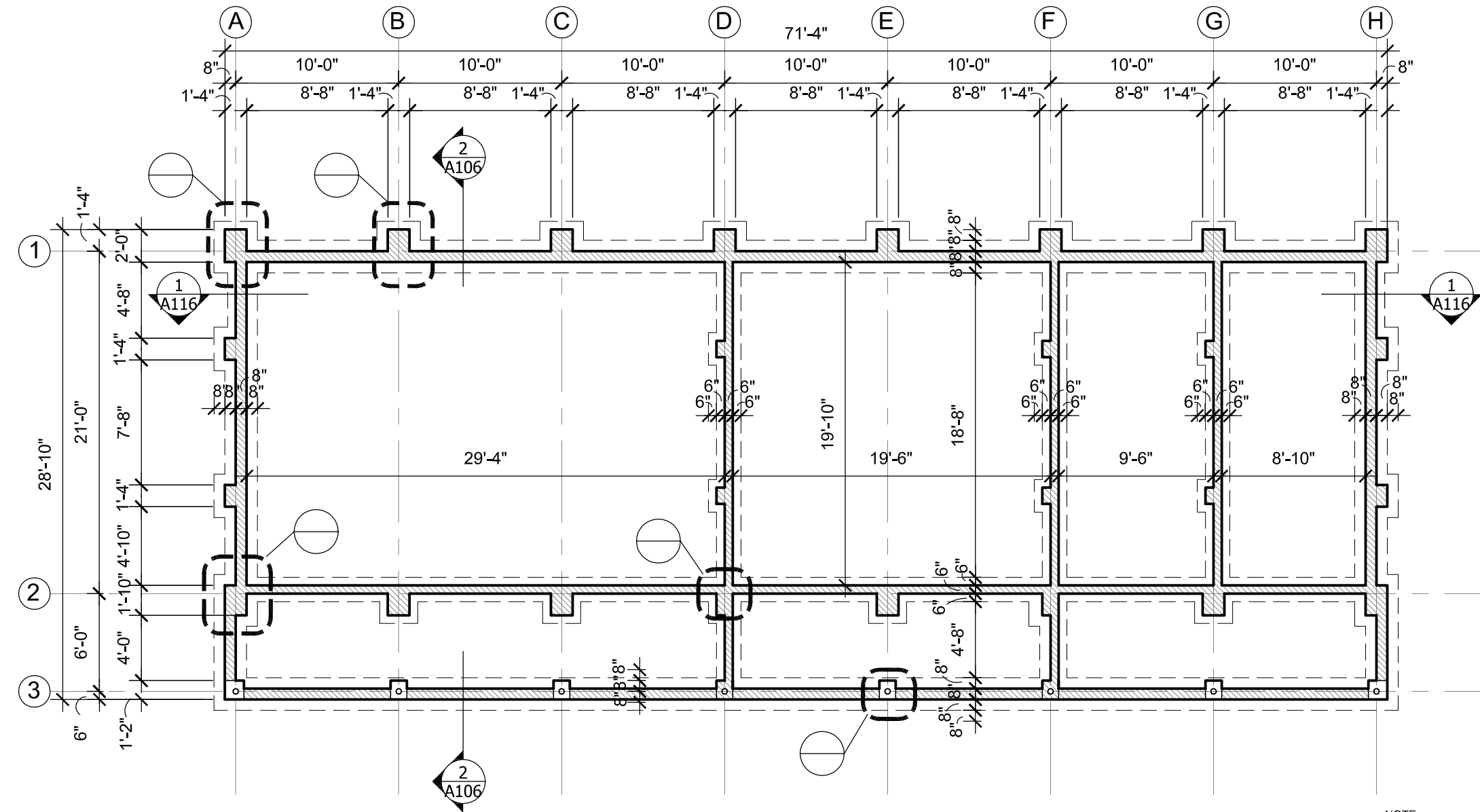


2 Transverse Section - Typ. Classroom Block (Sim to Admin Block)

scale: 1/8" = 1'-0"

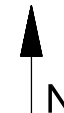
November 31, 2009

SCALE
 SEE NOTED



1 Foundation Plan - Admin Block

scale: 1/8" = 1'-0"



- NOTE:
1. CONTRACTOR TO REMOVE A MINIMUM OF 6" OF TOPSOIL TO 5'-0" AROUND THE ENTIRE BUILDING FOOTPRINT, PRIOR TO EXCAVATION.
 2. CONTRACTOR IS TO VERIFY THE NORTH DIRECTION AND BUILDING LAYOUT CORRESPONDS TO SITE PLAN. IF THE SITE OR ANY OBSTRUCTIONS CONFLICT WITH THE LAYOUT, THE CONTRACTOR IS TO COORDINATE A NEW SITE PLAN WITH THE OWNER.
 3. CONTRACTOR TO REMOVE ALL ORGANIC MATTER INCLUDING ROOTS AND VEGETATION IN AND AROUND THE FOUNDATIONS AND UNDER THE FLOOR SLABS.
 3. ALL EXTERIOR FOUNDATION WALLS ARE TO BE 8" GROUT FILLED CONCRETE BLOCKS. INTERIOR FOUNDATION WALLS MAY BE 6" GROUT FILLED CONCRETE BLOCKS, AS NOTED.
 4. CONTRACTOR IS TO BACKFILL WITH APPROVED LATERITIC SOIL ONLY AND THEN COMPACT PRIOR TO SAND SUB-BASE AND CONCRETE FLOOR SLAB.

NOT FOR CONSTRUCTION

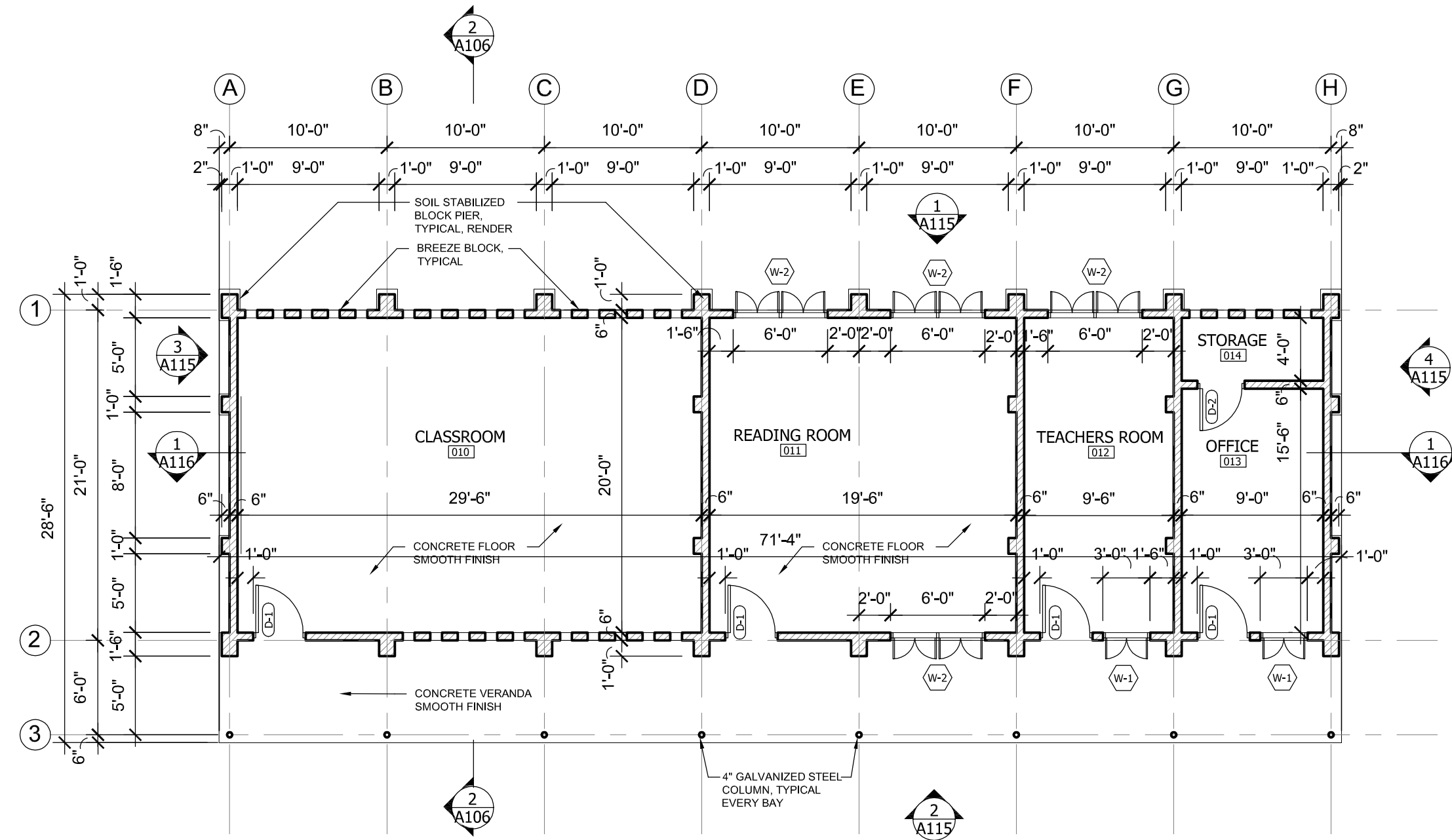
7-Classroom Primary School
 Division of Educational Facilities
 Ministry of Education Republic of Liberia

SHEET TITLE
Admin Block - Foundation Plan

SCALE
 SEE NOTED

DRAWING NO.
A110

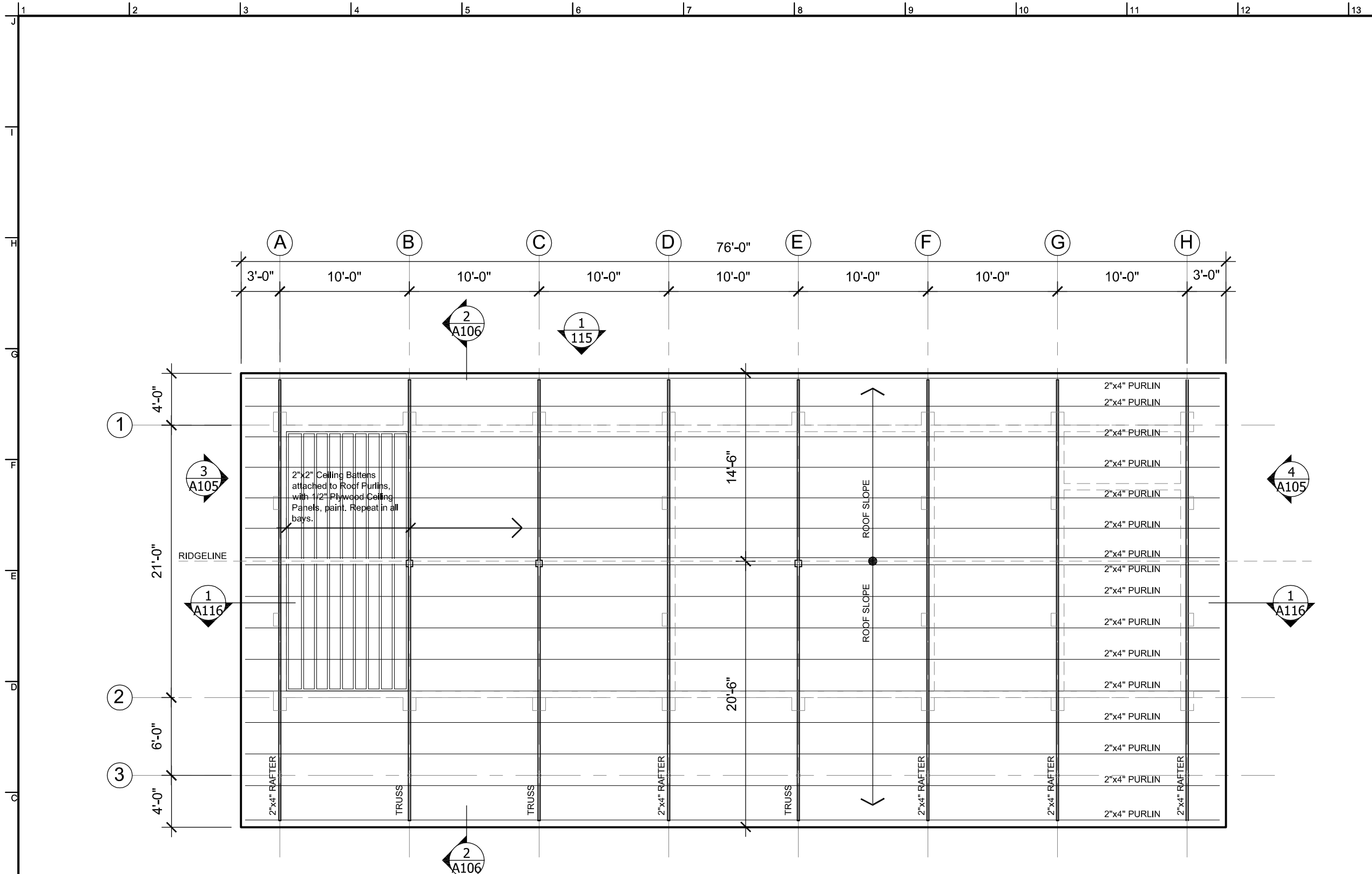
November 31, 2009



1 Floor Plan - Admin Block
 scale: 1/8" = 1'-0"

NOTE:
 1. ALL WALLS TO BE 6" x 6" x 12" SOIL STABILIZED BLOCK UNLESS OTHERWISE NOTED
 2. ALL FLOORS TO BE CONCRETE WITH SMOOTH TROWELED FINISH.
 3. REFER TO DETAIL 1/A150 FOR AXON DRAWING OF BUILDING CONSTRUCTION.
 4. CONTRACTOR TO VERIFY WITH OWNER BEFORE MAKING ANY MODIFICATIONS TO THE DRAWINGS, INCLUDING STEPPING THE BUILDING TO MATCH SITE CONTOURS. CONTRACTOR IS TO PROPOSE ALL MODIFICATION AND DETAILS **PRIOR** TO COMPLETING WORK.

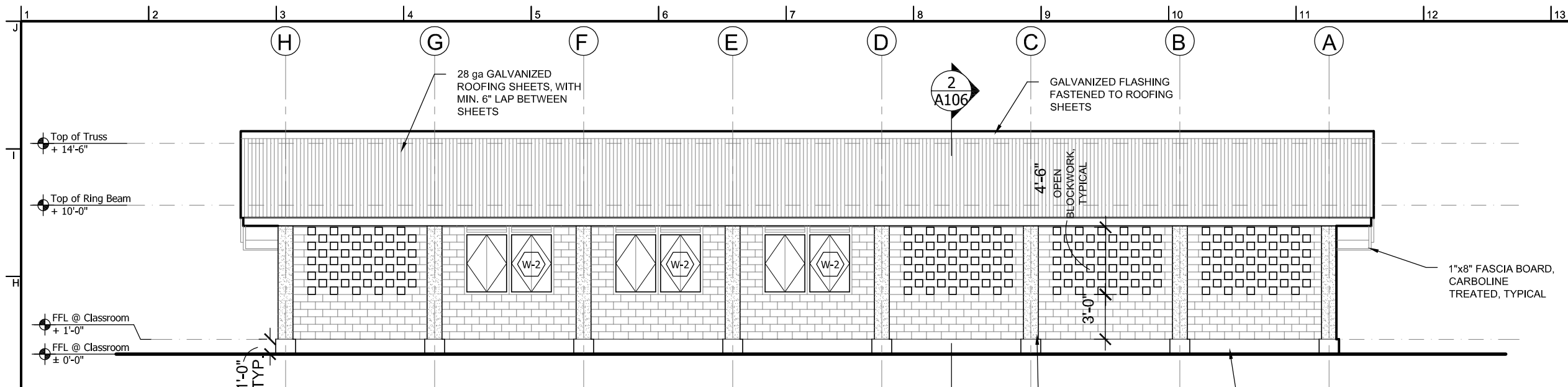
NOT FOR CONSTRUCTION



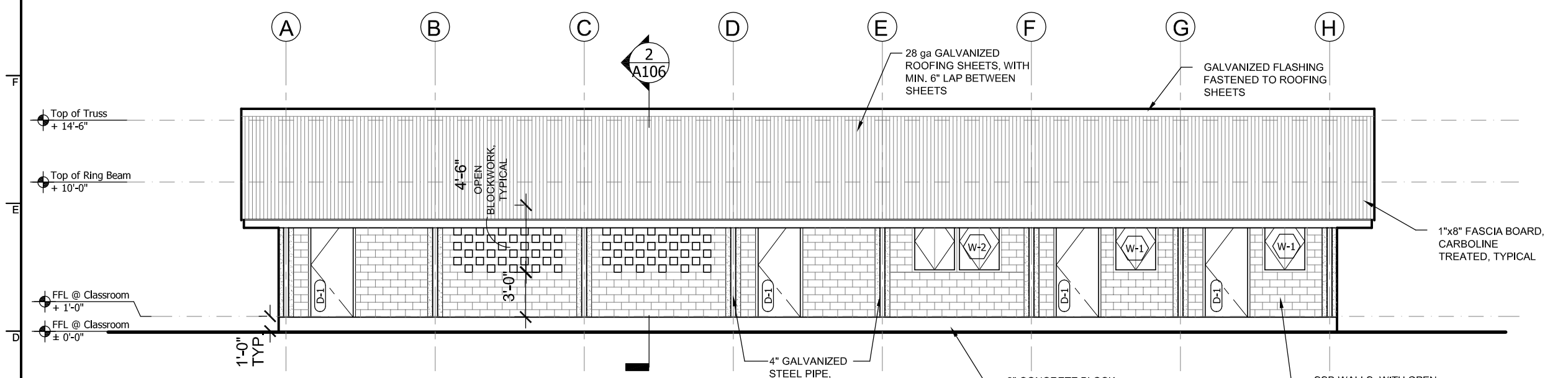
1 Roof Framing Plan - Admin Block
 scale: 1/8" = 1'-0"

- NOTE:
1. TRUSSES ARE TO BE CONSTRUCTED ON THE GROUND ON A FLAT, EVEN SURFACE AND ERECTED AS A WHOLE.
 2. ALL ROOFING TIMBER IS TO BE CARBOLINE TREATED **PRIOR** TO ERECTION.
 3. ROOFING SHEETS TO BE 28 ga GALVANIZED, LAPPED A MINIMUM OF 6" AND ATTACHED TO THE ROOF STRUCTURE AT EACH PURLIN.
 4. THERE ARE **NO** TIMBER TRUSSES ABOVE INTERIOR WALLS.
 5. ALL CEILINGS TO HAVE 1/2" PLYWOOD SHEETING, PAINT, ATTACHED TO 2"x2" BATTENS, FIXED TO ROOF PURLINS. TRUSSES WILL REMAIN EXPOSED.
 6. REFER TO SHEET A151 FOR TRUSS DETAILS.

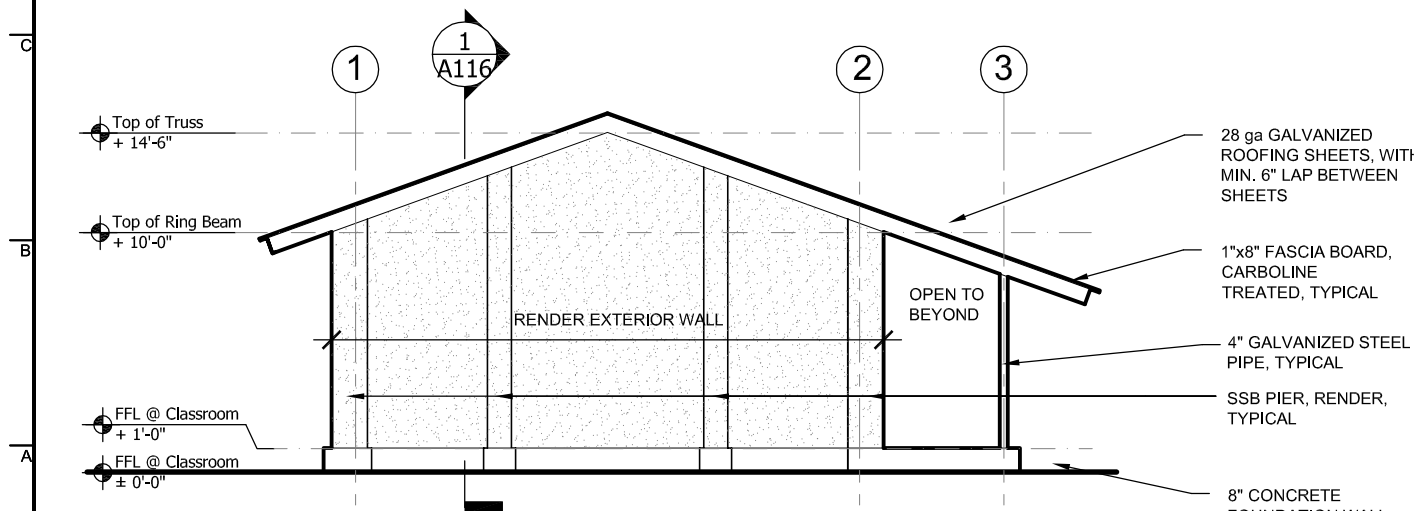
NOT FOR CONSTRUCTION



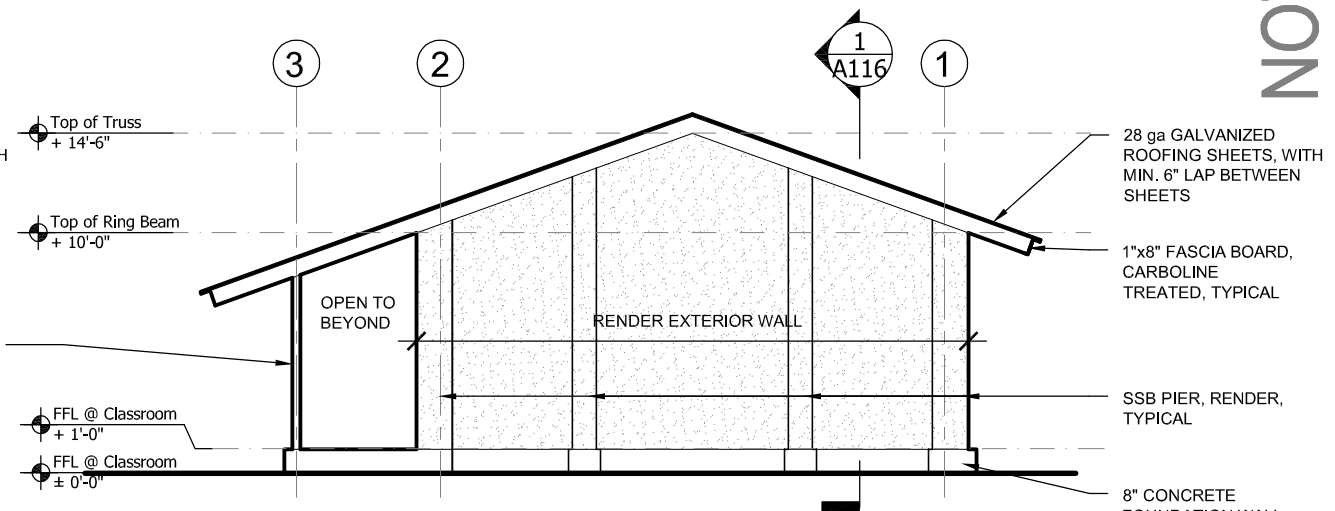
1 North Elevation - Admin Block
 scale: 1/8" = 1'-0"



2 South Elevation - Admin Block
 scale: 1/8" = 1'-0"

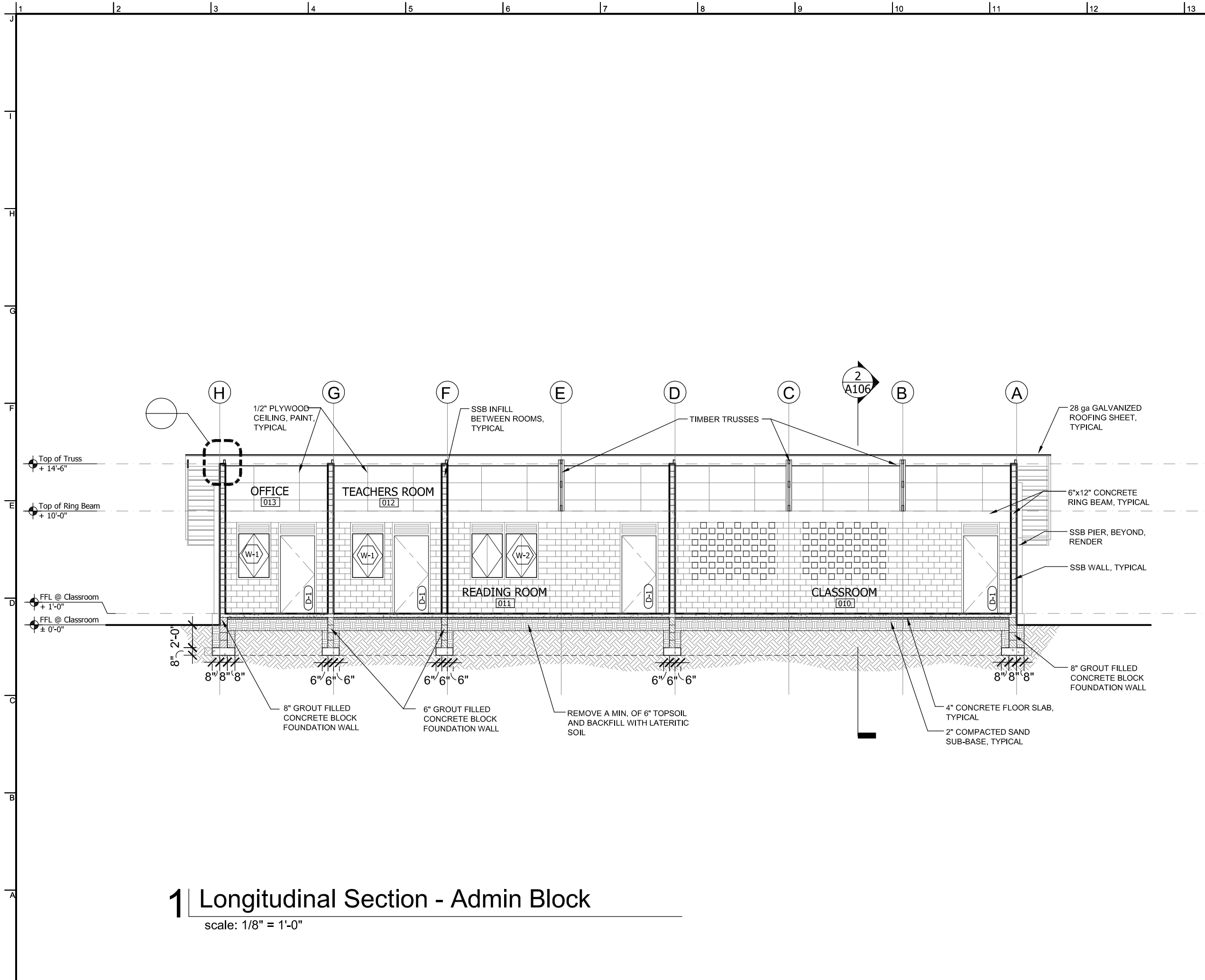


3 West Elevation - Admin Block
 scale: 1/8" = 1'-0"



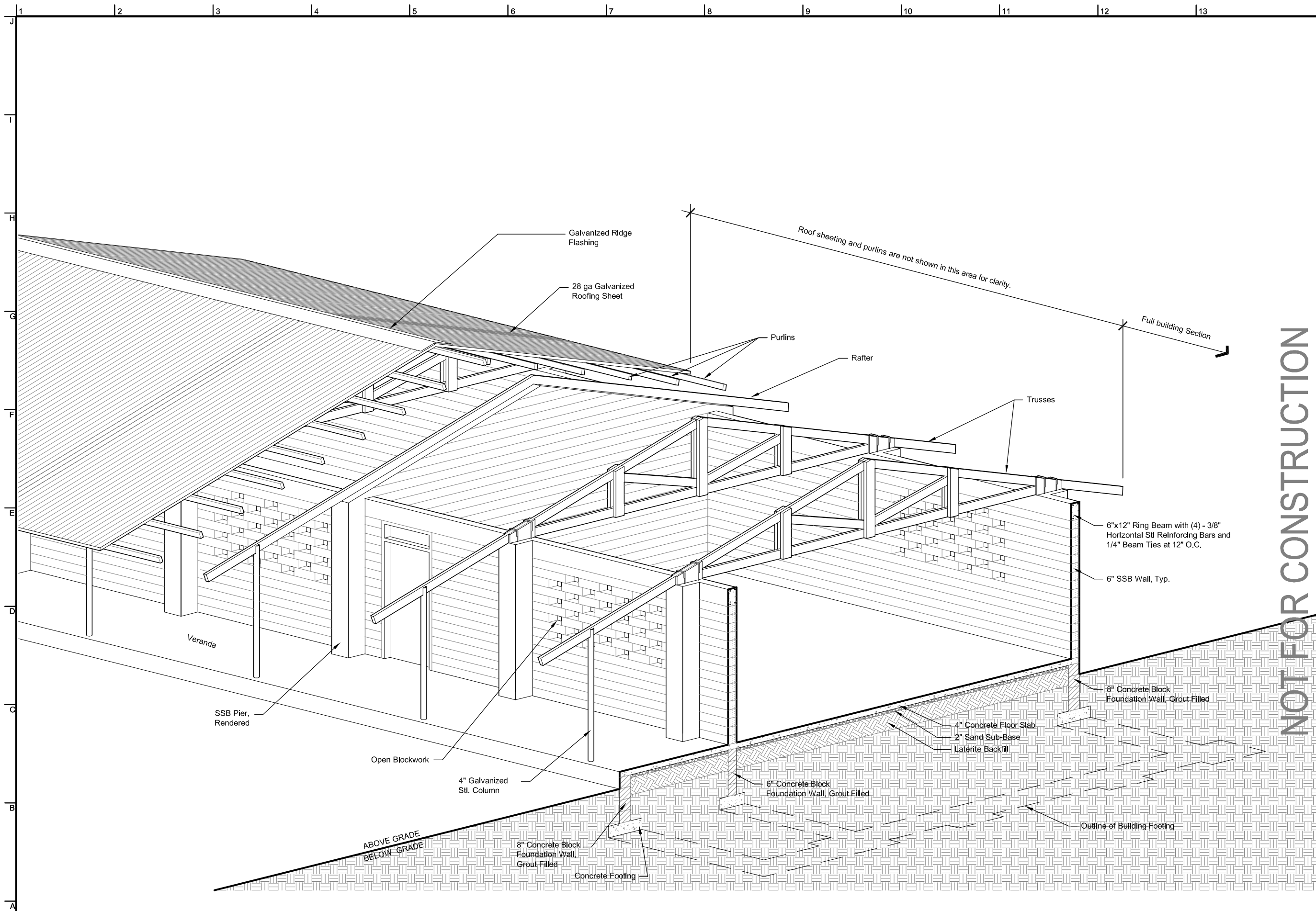
4 East Elevation - Admin Block
 scale: 1/8" = 1'-0"

NOT FOR CONSTRUCTION



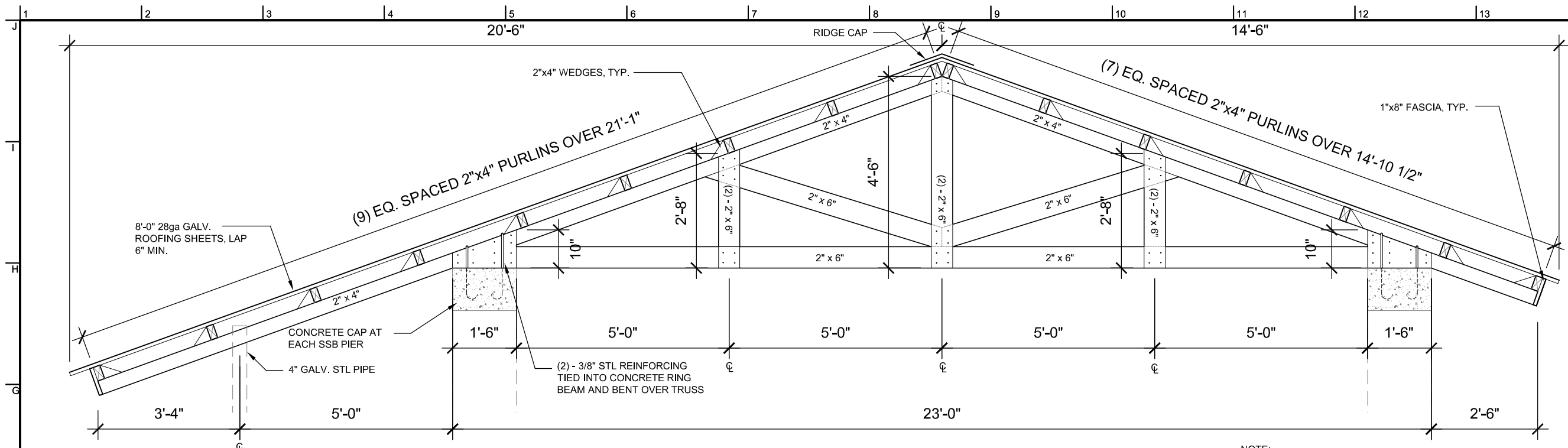
NOT FOR CONSTRUCTION

1 Longitudinal Section - Admin Block
 scale: 1/8" = 1'-0"



1 | Typ. Classroom and Admin Block - Axon / Section
 scale: 3/16" = 1'-0"

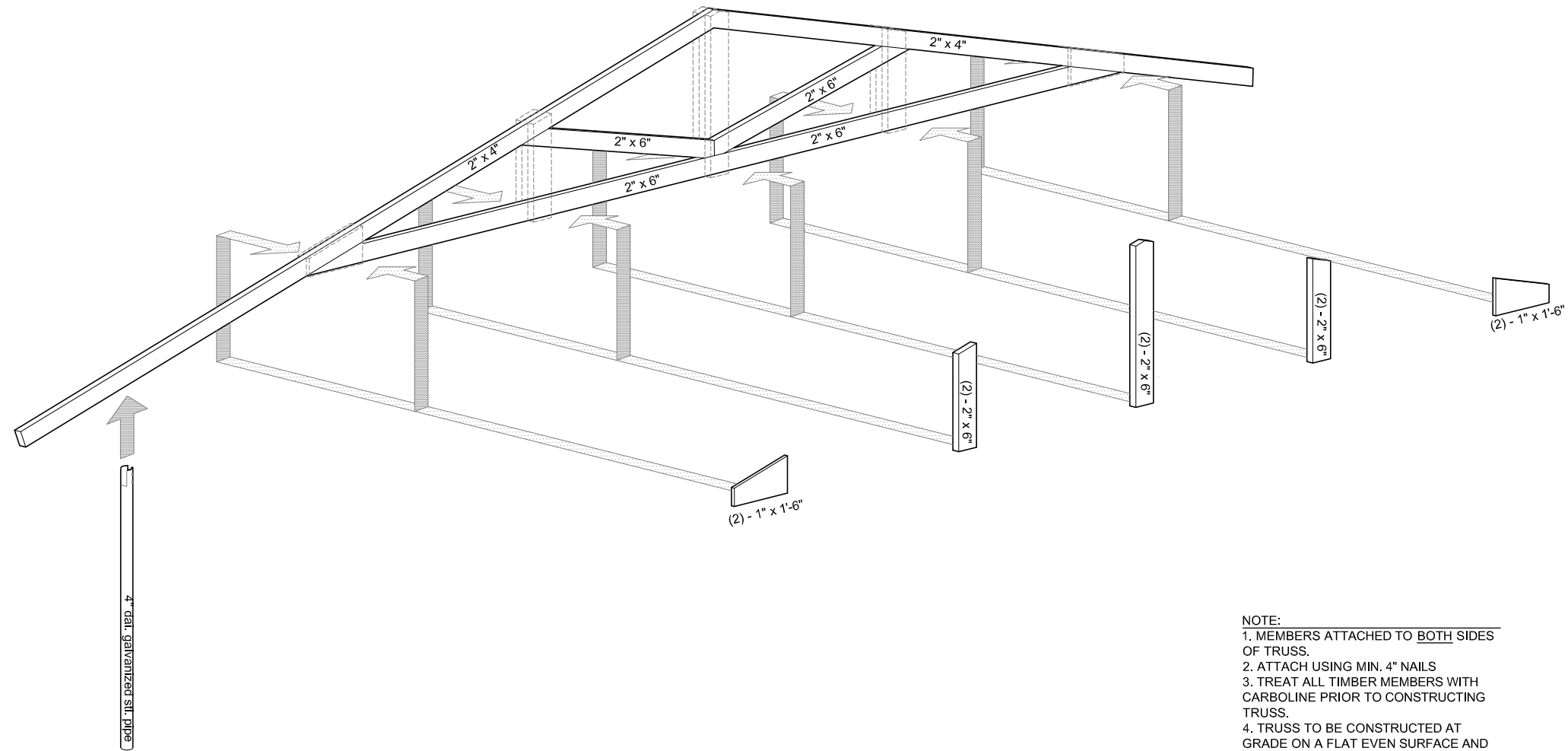
NOT FOR CONSTRUCTION



1 Truss Elevation

scale: 3/8" = 1'-0"

NOTE:
1. 2"x2" CEILING BATTENS AND 1/2" PLYWOOD CEILING NOT SHOWN FOR CLARITY.

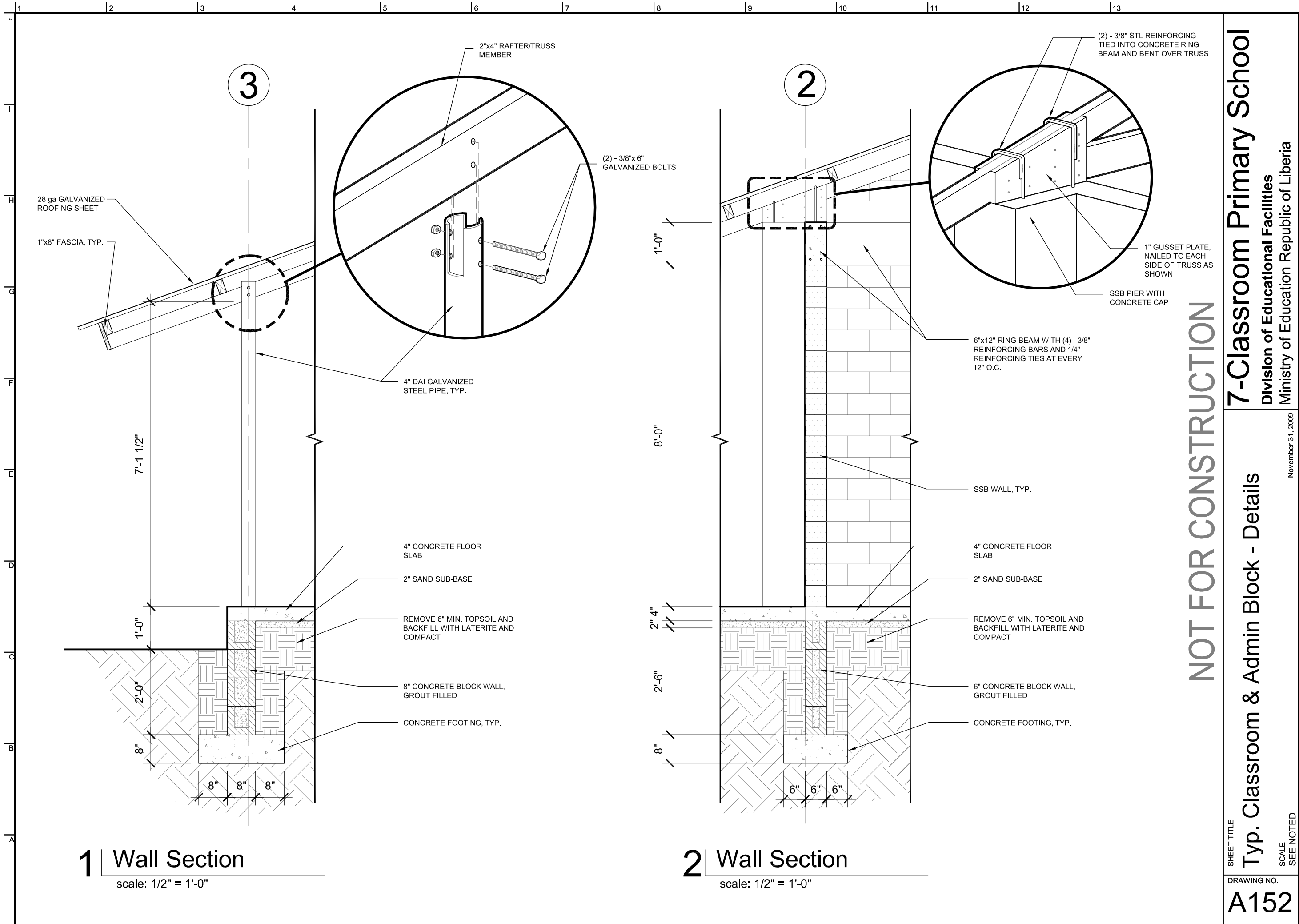


2 Truss - Exploded Axon

scale: 1/4" = 1'-0"

NOTE:
1. MEMBERS ATTACHED TO BOTH SIDES OF TRUSS.
2. ATTACH USING MIN. 4" NAILS
3. TREAT ALL TIMBER MEMBERS WITH CARBOLINE PRIOR TO CONSTRUCTING TRUSS.
4. TRUSS TO BE CONSTRUCTED AT GRADE ON A FLAT EVEN SURFACE AND ERECTED AS A SINGLE UNIT.

NOT FOR CONSTRUCTION



28 ga GALVANIZED ROOFING SHEET
1"x8" FASCIA, TYP.

3

2"x4" RAFTER/TRUSS MEMBER

(2) - 3/8"x 6" GALVANIZED BOLTS

4" DAI GALVANIZED STEEL PIPE, TYP.

7'-1 1/2"

1'-0"

2'-0"

8"

8" 8" 8"

4" CONCRETE FLOOR SLAB
2" SAND SUB-BASE
REMOVE 6" MIN. TOPSOIL AND BACKFILL WITH LATERITE AND COMPACT
8" CONCRETE BLOCK WALL, GROUT FILLED
CONCRETE FOOTING, TYP.

2

(2) - 3/8" STL REINFORCING TIED INTO CONCRETE RING BEAM AND BENT OVER TRUSS

1" GUSSET PLATE, NAILED TO EACH SIDE OF TRUSS AS SHOWN

SSB PIER WITH CONCRETE CAP

6"x12" RING BEAM WITH (4) - 3/8" REINFORCING BARS AND 1/4" REINFORCING TIES AT EVERY 12" O.C.

1'-0"

8'-0"

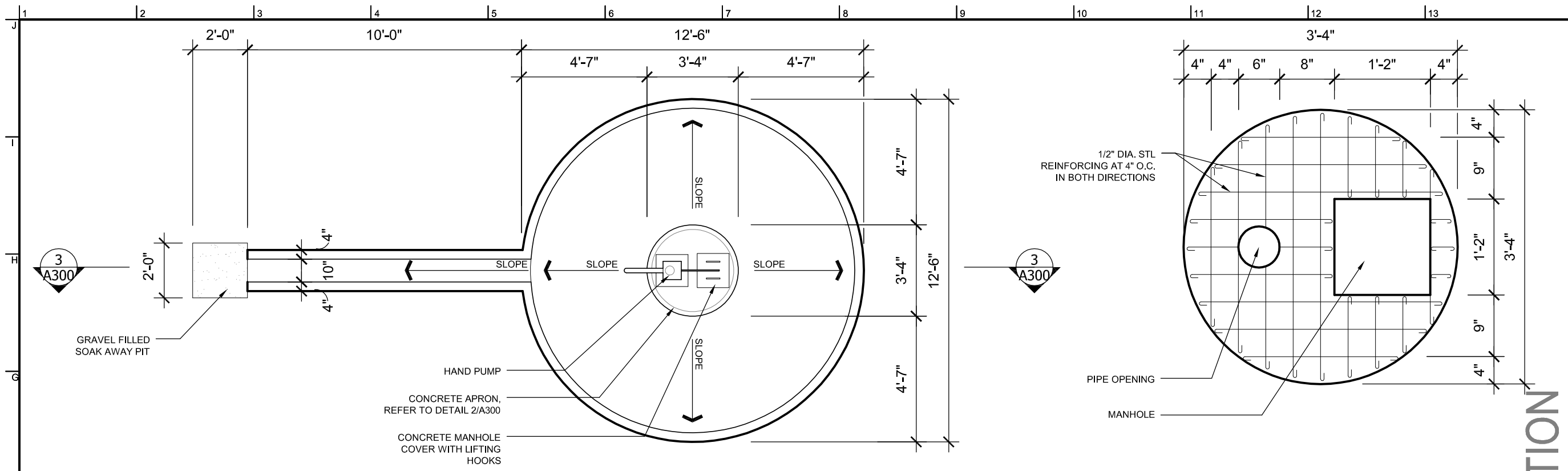
2' 4"

2'-6"

8"

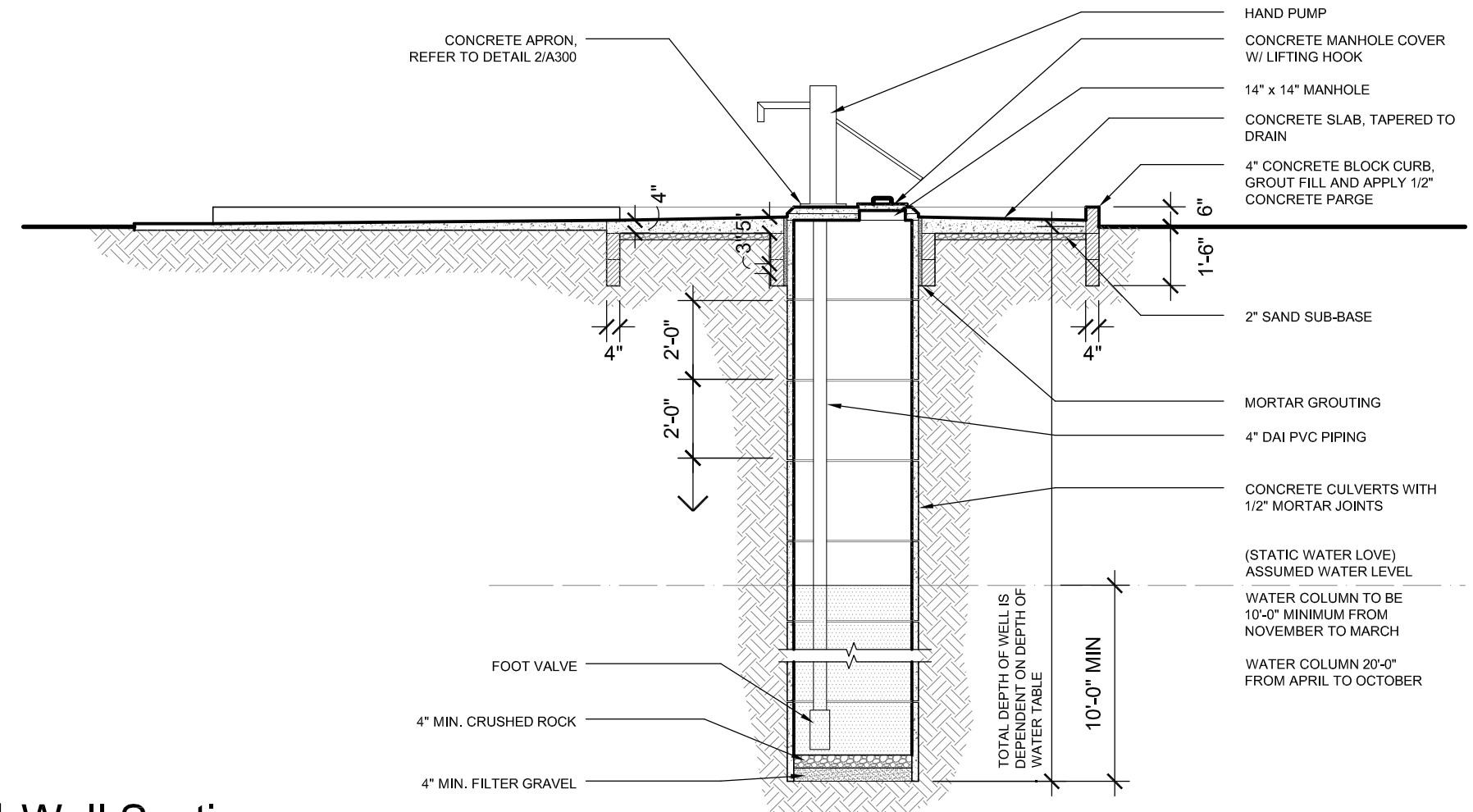
6" 6" 6"

SSB WALL, TYP.
4" CONCRETE FLOOR SLAB
2" SAND SUB-BASE
REMOVE 6" MIN. TOPSOIL AND BACKFILL WITH LATERITE AND COMPACT
6" CONCRETE BLOCK WALL, GROUT FILLED
CONCRETE FOOTING, TYP.



1 Well Plan
scale: 1/4" = 1'-0"

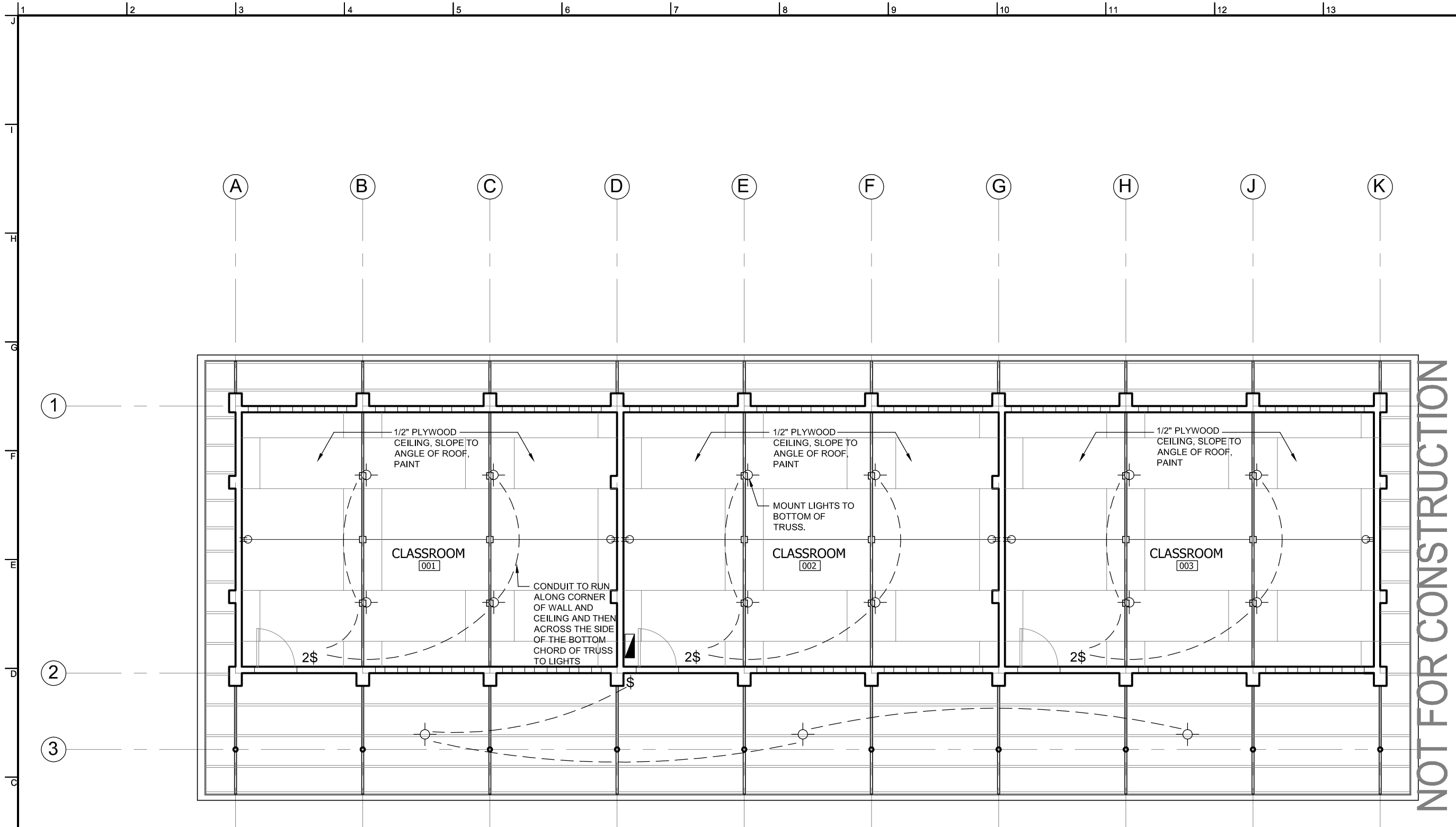
2 Well Concrete Apron
scale: 3/4" = 1'-0"



3 Well Section
scale: 1/4" = 1'-0"

NOTE:
1. CONTRACTOR SHALL USE THE AFRIDEV OR THE INDIA MARK II FOR THE HAND PUMP. ALL OTHER HAND PUMPS MUST BE APPROVED BY OWNER PRIOR TO INSTALLATION.

NOT FOR CONSTRUCTION

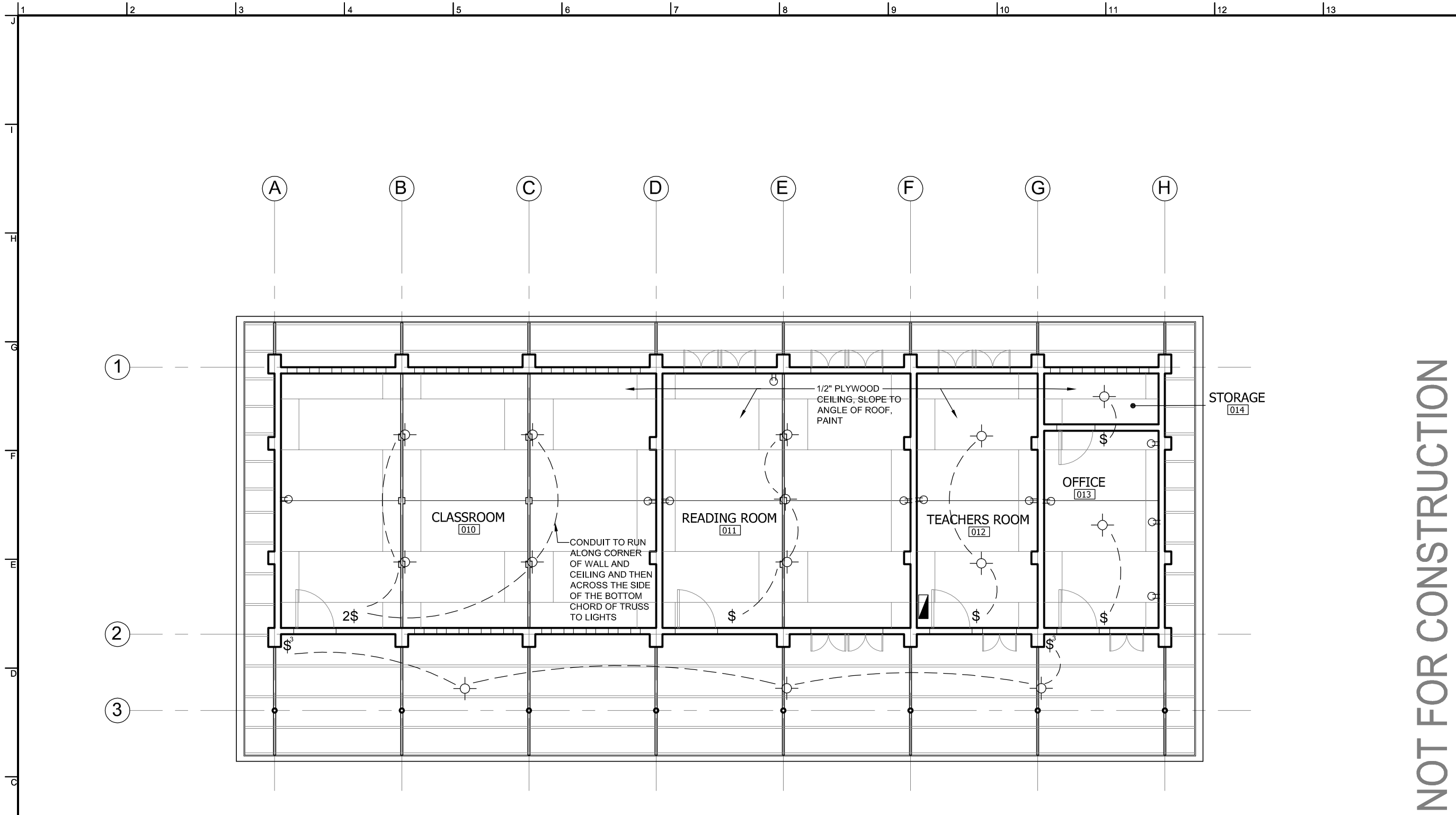


NOT FOR CONSTRUCTION

NOTE:
 1. ALL ELECTRICAL RUNS TO BE IN WALL MOUNTED EXPOSED 1/2" CONDUIT, UNLESS OTHERWISE NOTED.
 2. WHERE POSSIBLE RUN CONDUIT IN CORNER OF A ROOM.
 3. ALL CONDUIT TO RUN PARALLEL OR PERPENDICULAR TO BUILDING AXIS.

Electrical Legend	
	Single Socket Outlet (220V) at 12" AFF
	Single Pole Switch
	(2) Single Pole Switches
	Two-way Pole Switch
	Ceiling Mounted Light Fixture w/ 100W Compact Fluorescent Light Bulb
	Panel Box

1 Electrical and Reflected Ceiling Plan - Typ. Classroom Block
 scale: 1/8" = 1'-0"



NOT FOR CONSTRUCTION

1 Electrical and Reflected Ceiling Plan - Admin Block
 scale: 1/8" = 1'-0"

NOTE:
 1. ALL ELECTRICAL RUNS TO BE IN WALL MOUNTED EXPOSED 1/2" CONDUIT, UNLESS OTHERWISE NOTED.
 2. WHERE POSSIBLE RUN CONDUIT IN CORNER OF A ROOM.
 3. ALL CONDUIT TO RUN PARALLEL OR PERPENDICULAR TO BUILDING AXIS.



- Electrical Legend**
- Single Socket Outlet (220V) at 12" AFF
 - Single Pole Switch
 - (2) Single Pole Switches
 - Two-way Pole Switch
 - Ceiling Mounted Light Fixture w/ 100W Compact Fluorescent Light Bulb
 - Panel Box