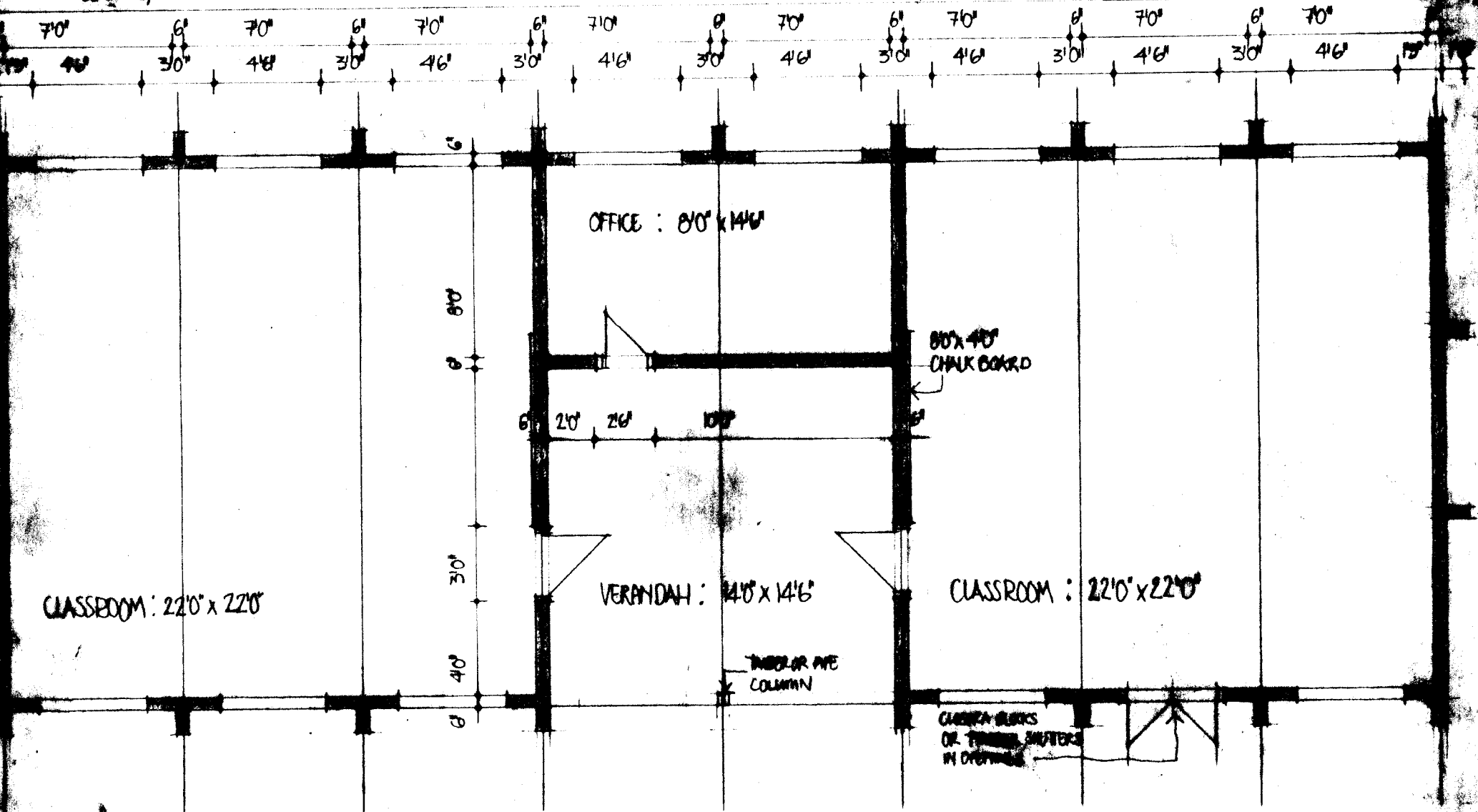
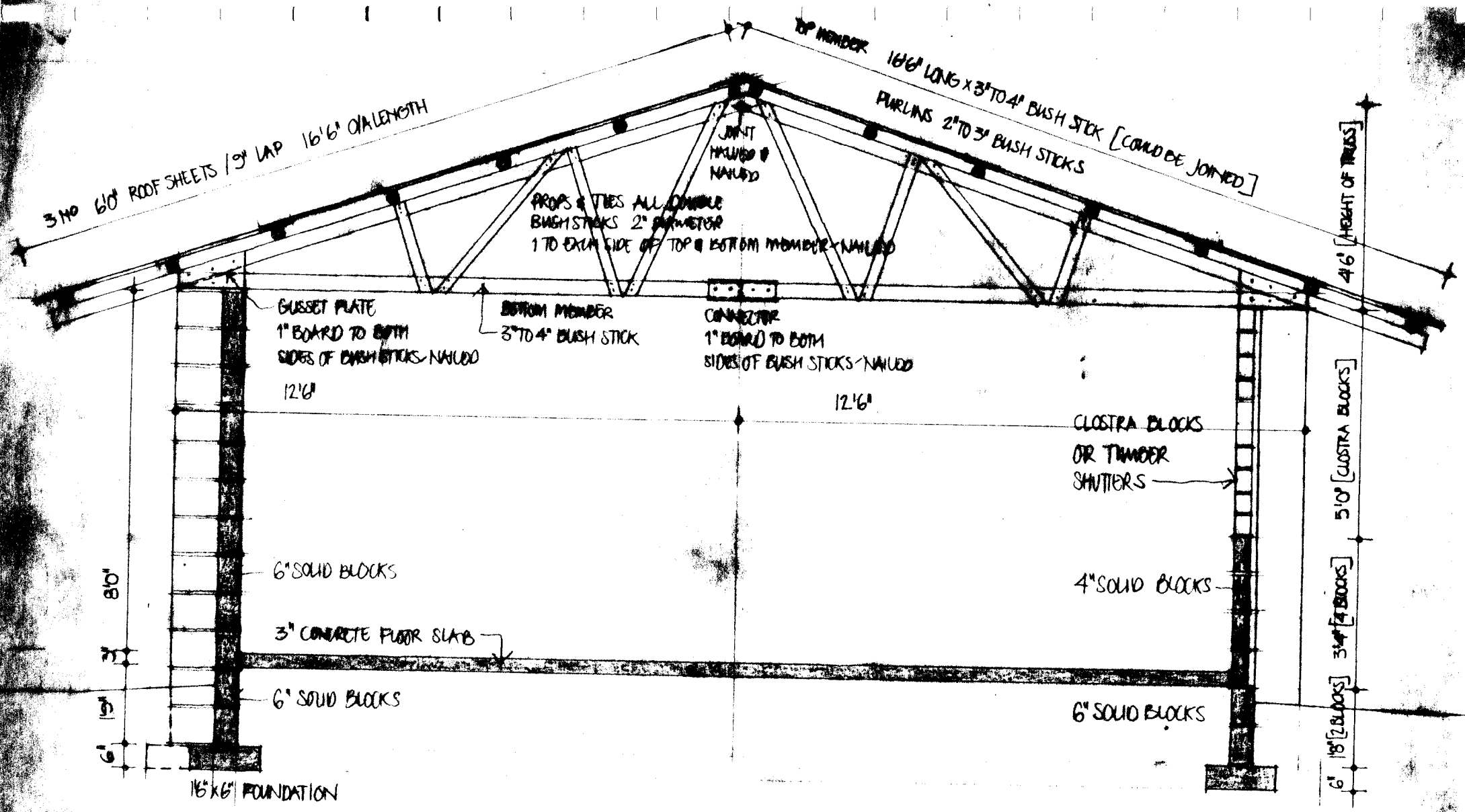


60'6" O/A BUILDING



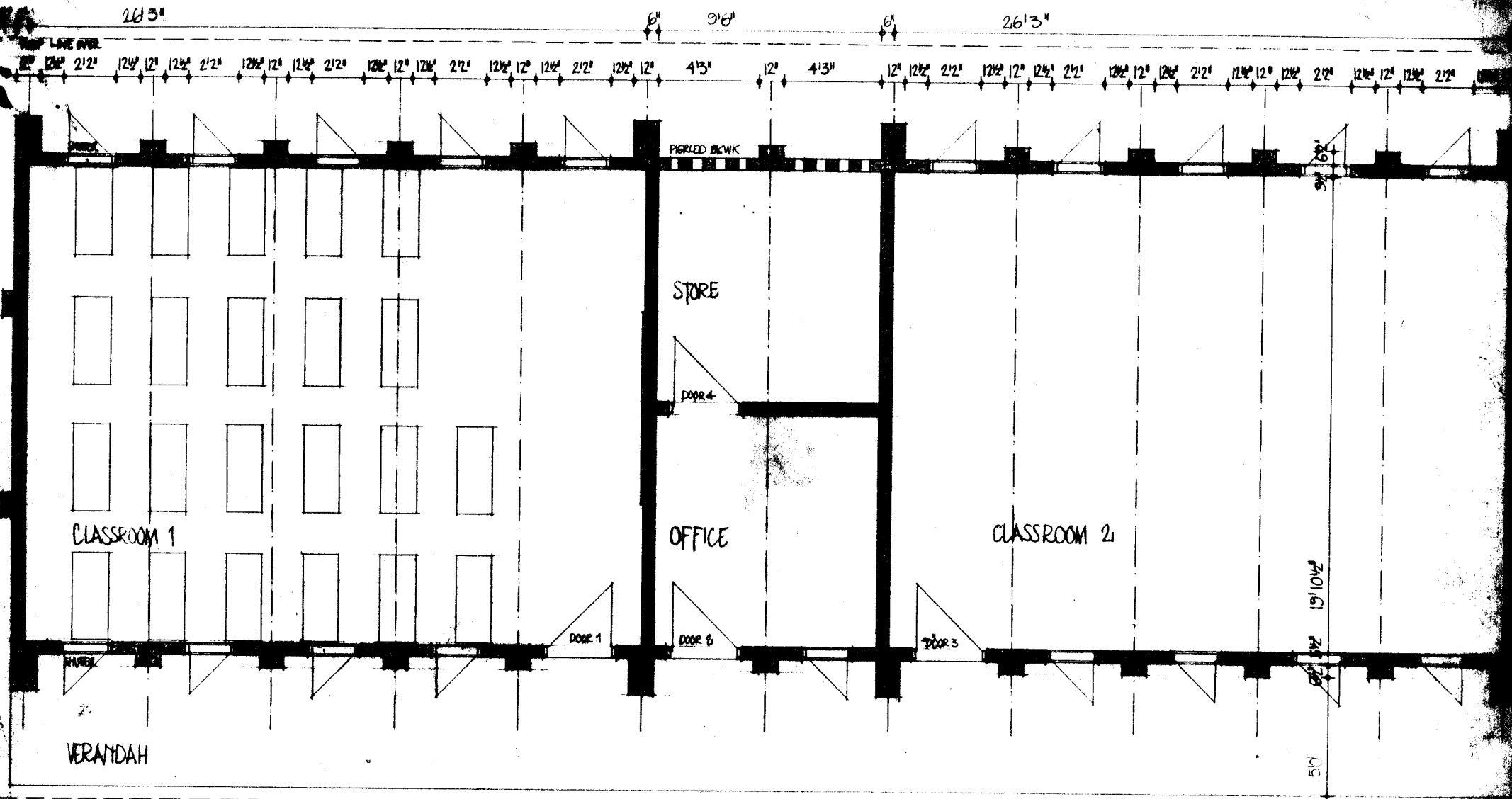
AHMADYA PRIMARY SCHOOL : RISE
 FLOOR PLAN : SCALE : 1/4" = 1'0" ARCHITECT
 NEEL KUMAR SINGH, B.A. M.A. ARCHITECT
 AHMADYA P.S.



AHMADYA PRIMARY SCHOOL : ROKOM
 TYPICAL SECTION SCALE : 1/2" = 1'0"

NIGEL WAKEMAN RIBA ASIA ARCHITECT
 SI / IMA EDUCATION PROJECT UNIT

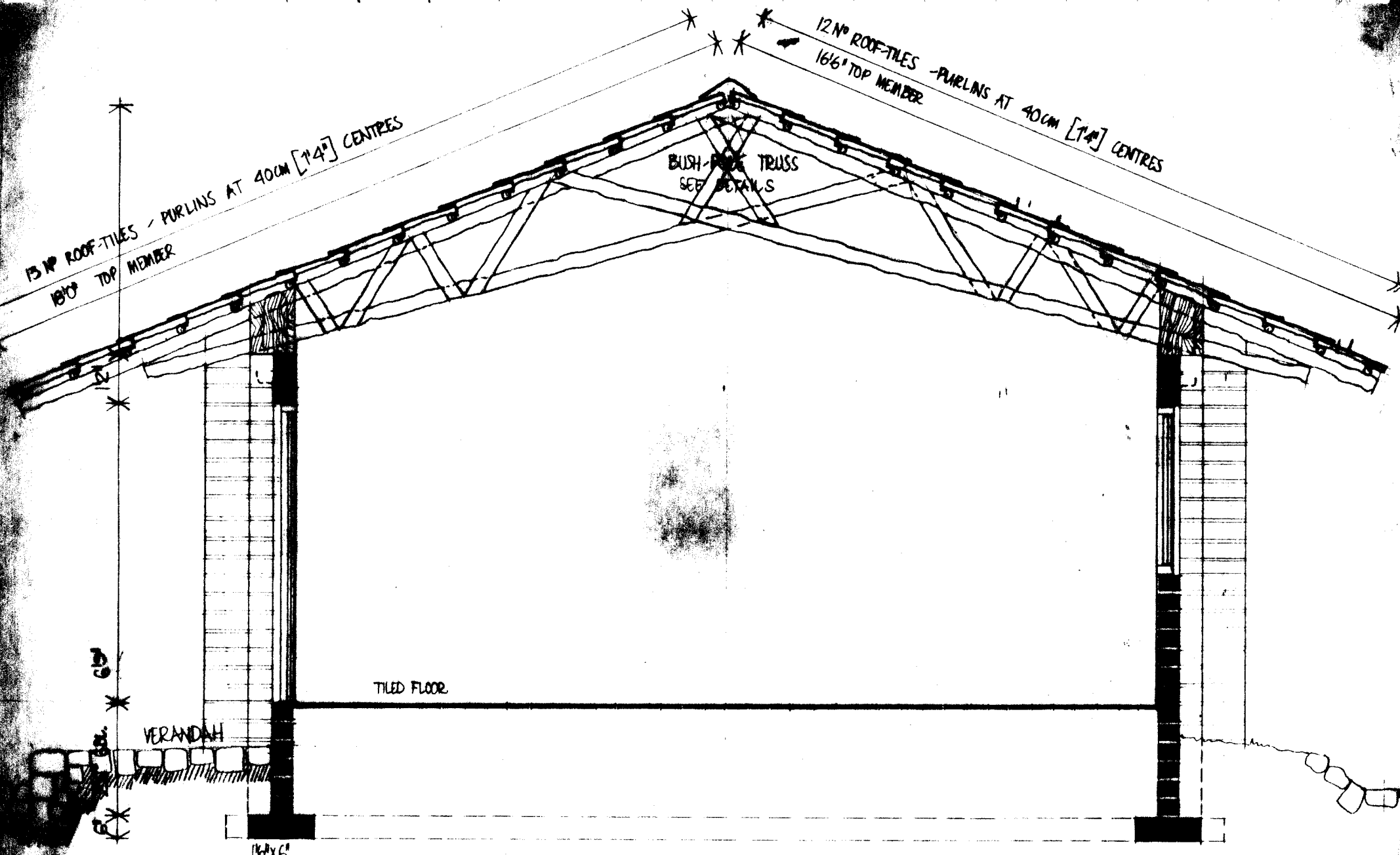
ANIAPY PIA



FLOOR PLAN

2 CLASSROOM UNIT WITH FRONT VERANDAH

RPS/2CA/001
 1/4" = 1'0" SEPT

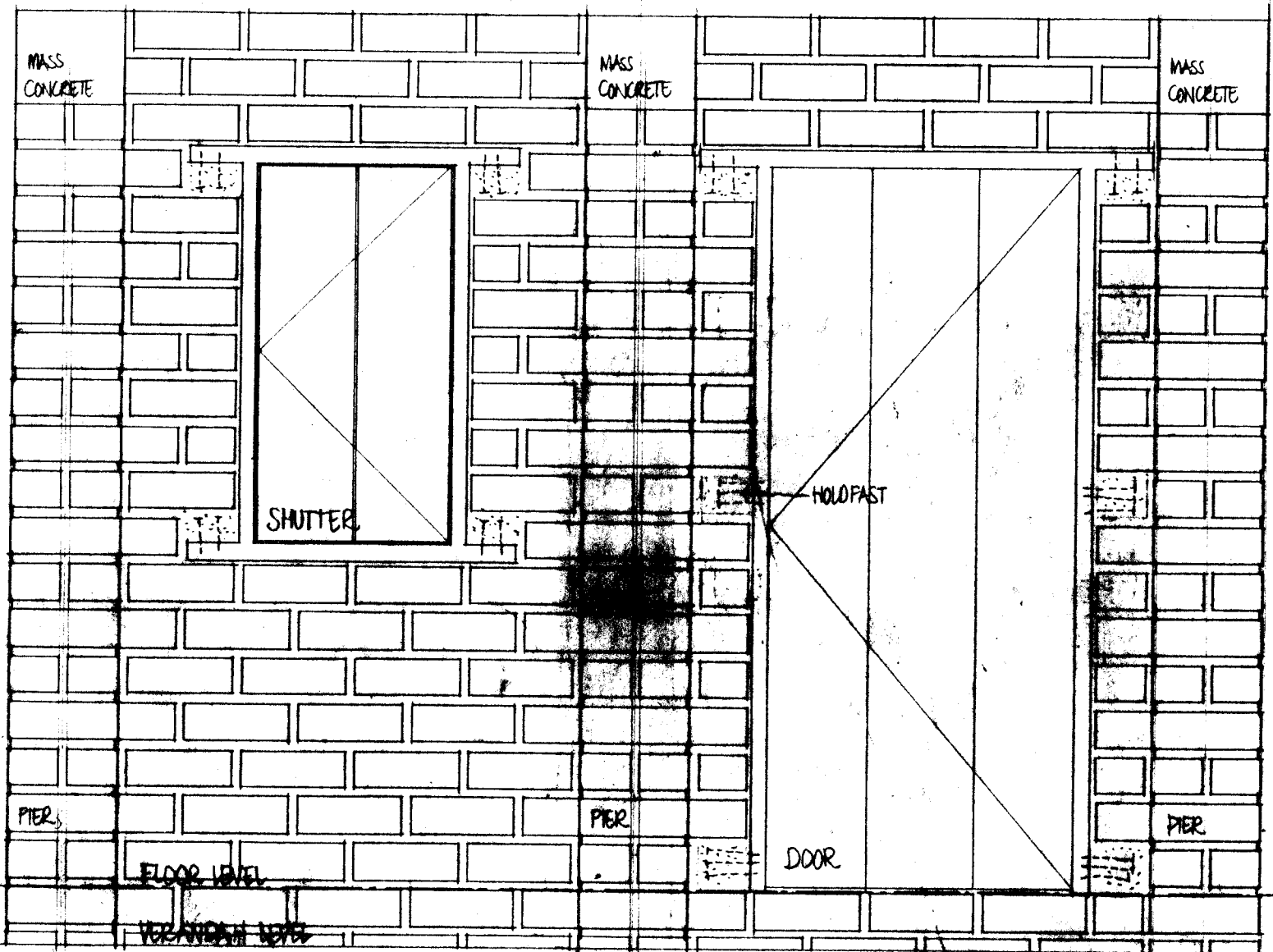


SECTION AT 'A'

3BL - 12"

9BLOCKS - 3'10"

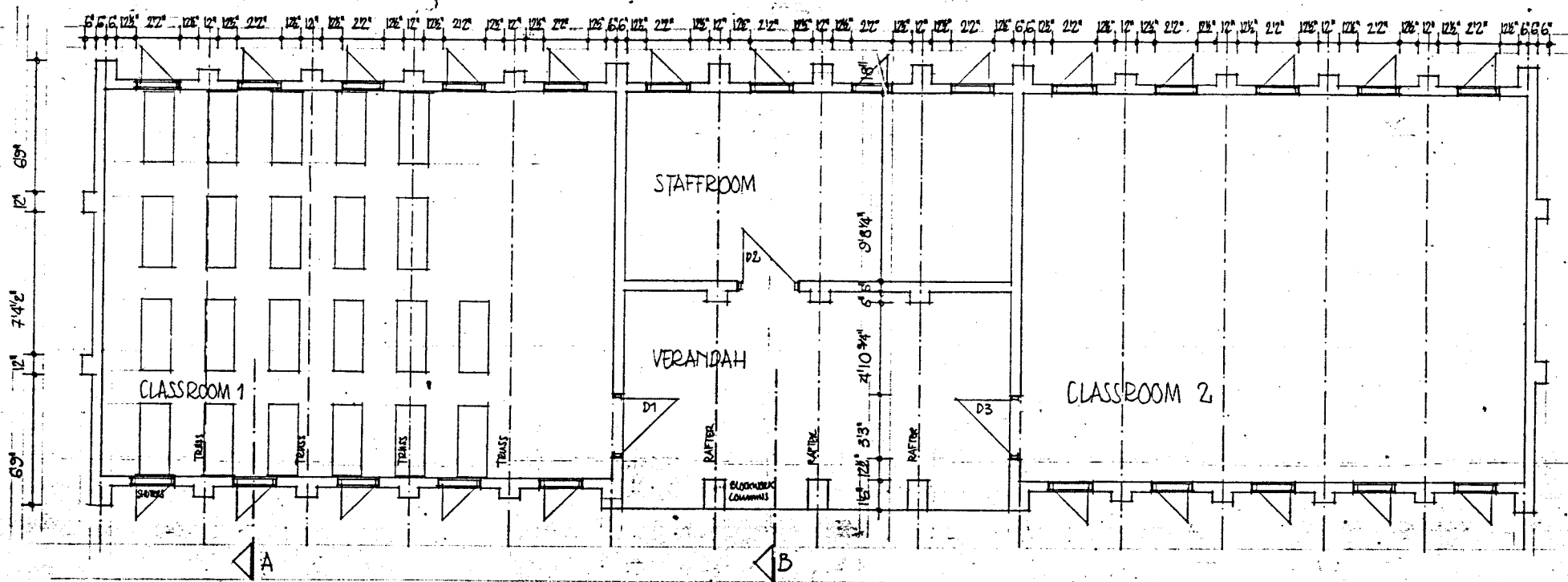
7BLOCKS - 2'11"



12" * 12 1/2" * 2' 2" * 12 1/2" * 12" * 6" * 3' 3" * 6" * 12" *
 * 5' 3" * * 5' 3" * * * * *
 * * * * * * * * * * * * *

PART VERANDAH ELEVATION

RPS/2CA/1000
1'0"

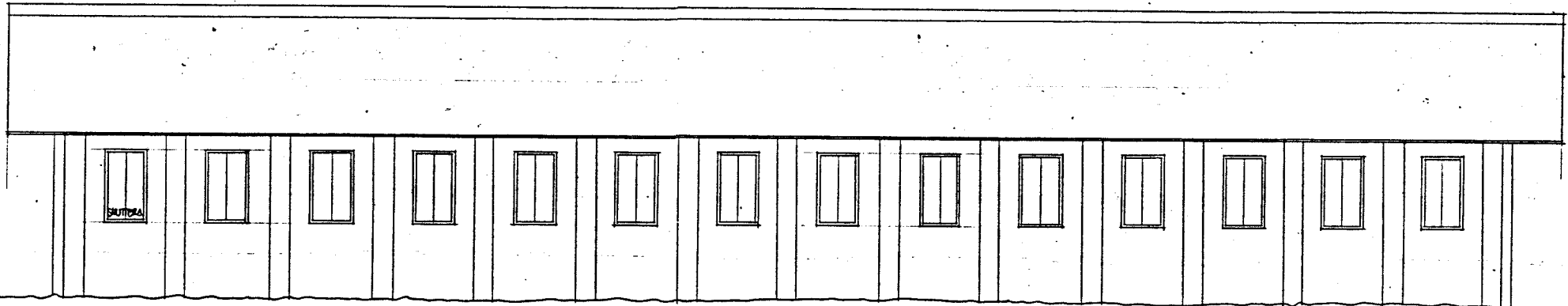


FLOOR PLAN

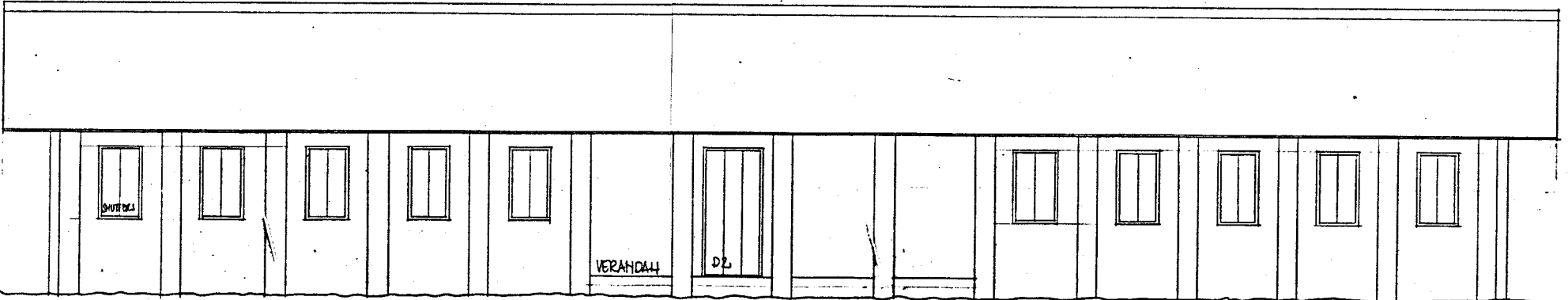
RPS/CB/001

1/4" = 1'0"

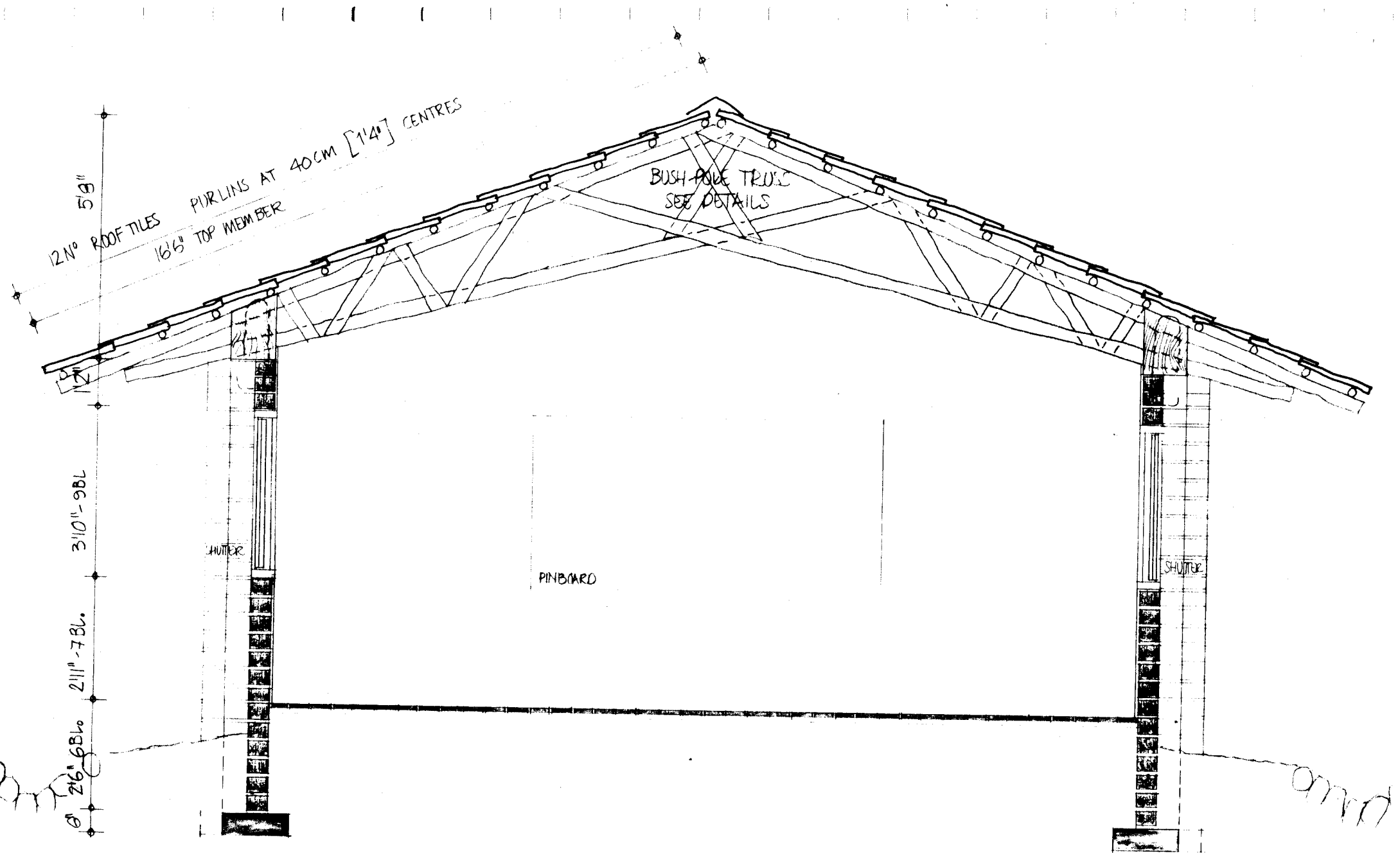
OCTOBER 1987



REAR ELEVATION



FRONT [ENTRANCE] ELEVATION



5'9"
 12N° ROOF TILES
 PURLINS AT 40CM [1'4"] CENTRES
 16/6" TOP MEMBER

BUSH POLE TRUSS
 SEE DETAILS

3'10" - 9BL

2'11" - 7BL

2'6" - 6BL

SHUTTER

PINBOARD

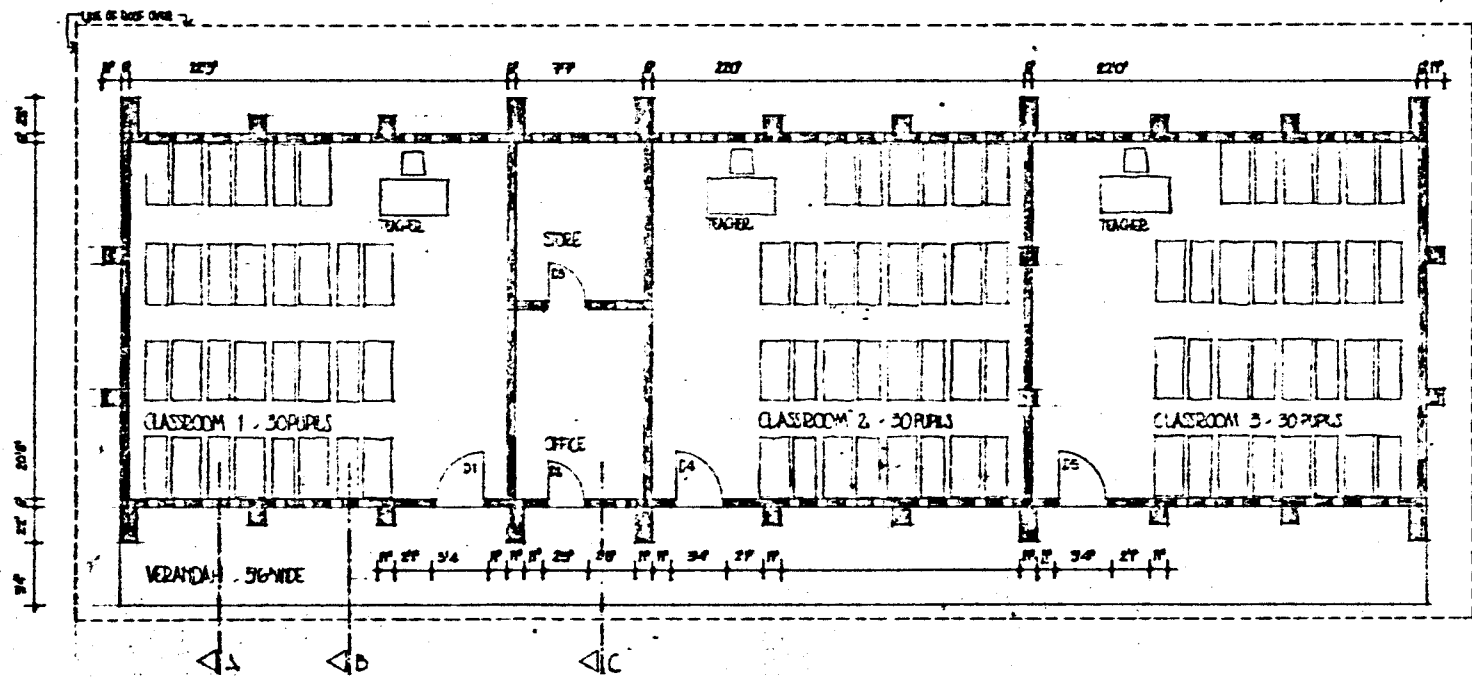
SHUTTER

SECTION AT 'A'

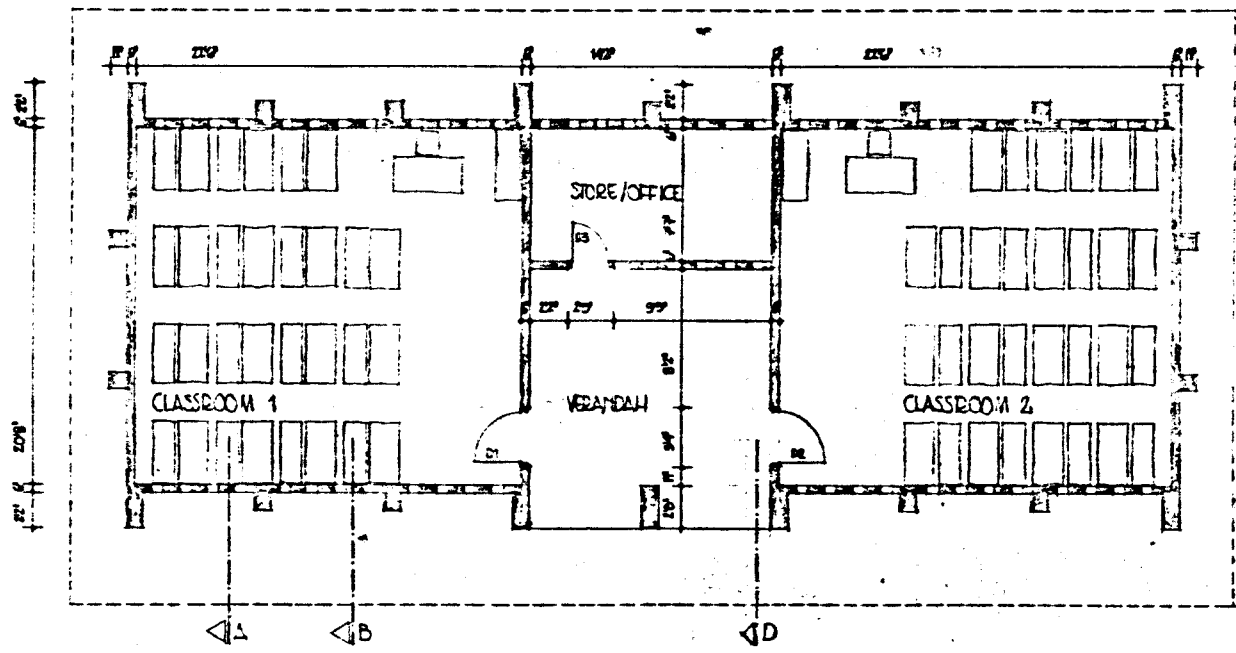
RPS/CB/007

1/2" = 1'0"

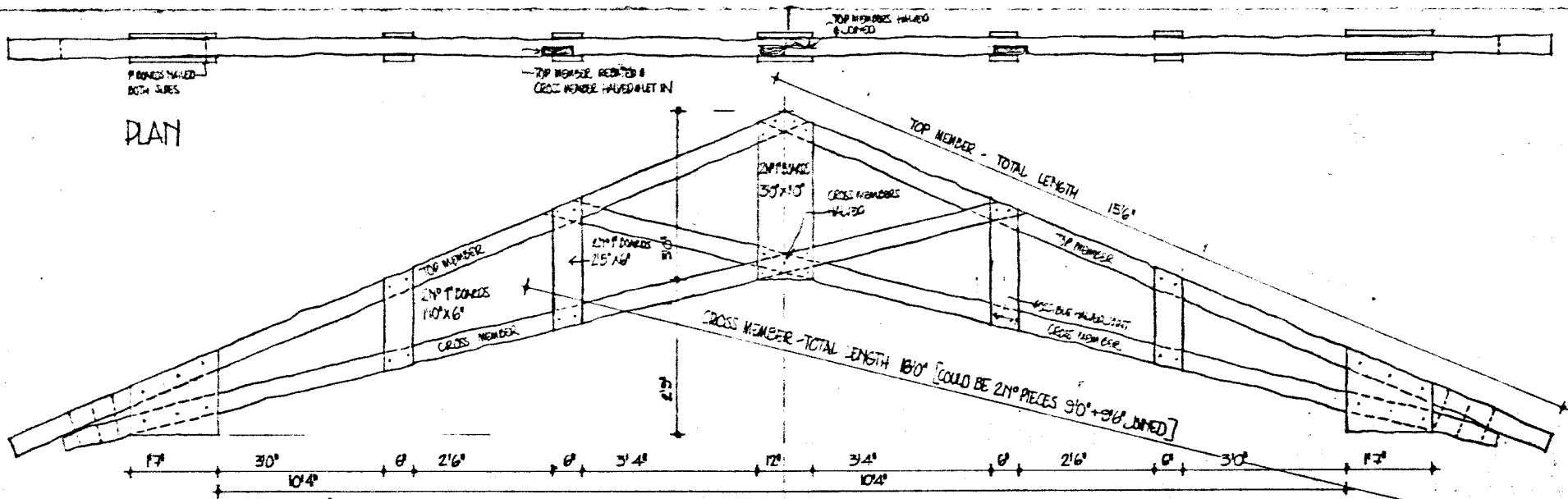
OCTOBER 1987



SL/IDA 3rd EDUCATION PROJECT
 PROTOTYPE RURAL PRIMARY SCHOOLS
 3 CLASSROOM UNIT CLASSROOM TYPE B
 FLOOR PLAN DRS/6/01 10' 40"



3. ADA 3 EDUCATION PROJECT
 PROTOTYPE RURAL PRIMARY SCHOOLS
 2 CLASSROOM UNIT CLASSROOM TYPE B
 FLOOR PLAN BPS/B/O-4 1/10

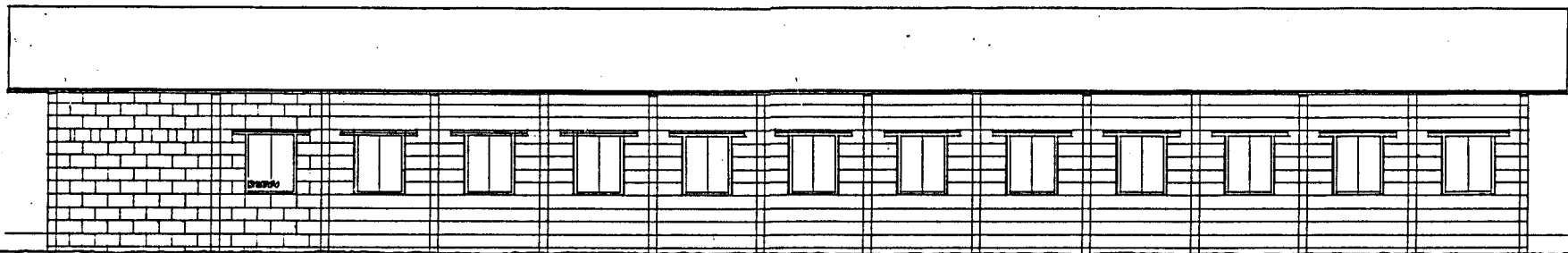


PLAN

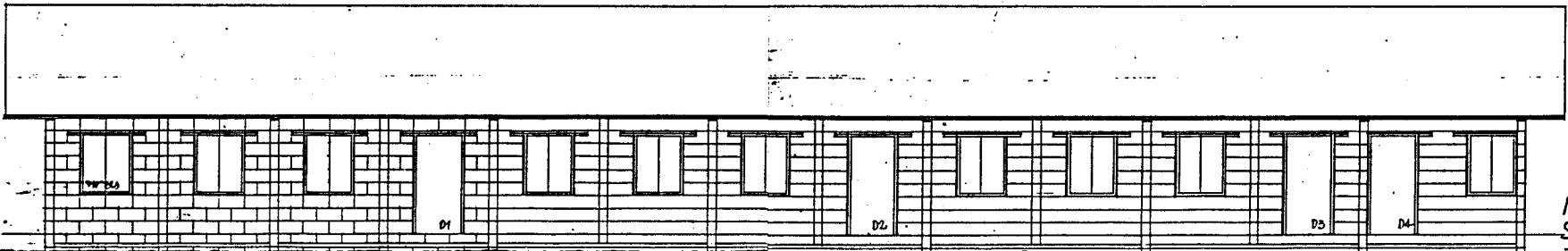
ELEVATION

NOTE: ALL JOINTS NAILED WITH 4" WIRE NAILS BOTH SIDES.

SI/IDA 3 rd EDUCATION PROJECT
PROTOTYPE RURAL PRIMARY SCHOOLS
BO-PUJEHUM CLASSROOMS - TYPE A
TRUSS DETAILS BDA/BA/07 P-10*
<small>REPL. PROGRAM BANGLA. EDUCATION BUILDING SPECIALIST NOV. 1984</small>

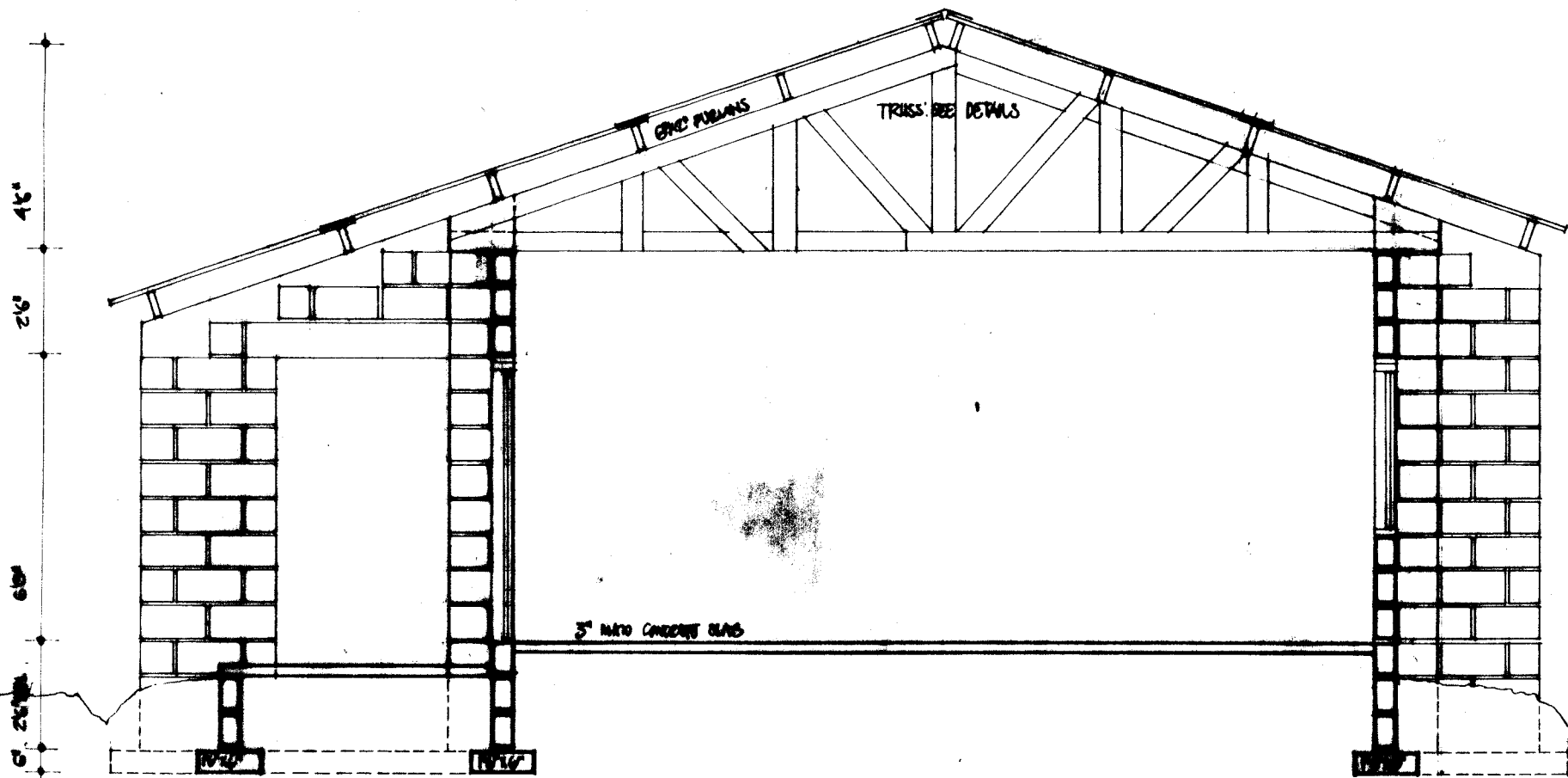


REAR ELEVATION



VERANDAH ELEVATION

RURAL PRIMARY
SCHOOLS
3 CLASSROOM UNIT
SANDCRETE BLOCKS/3



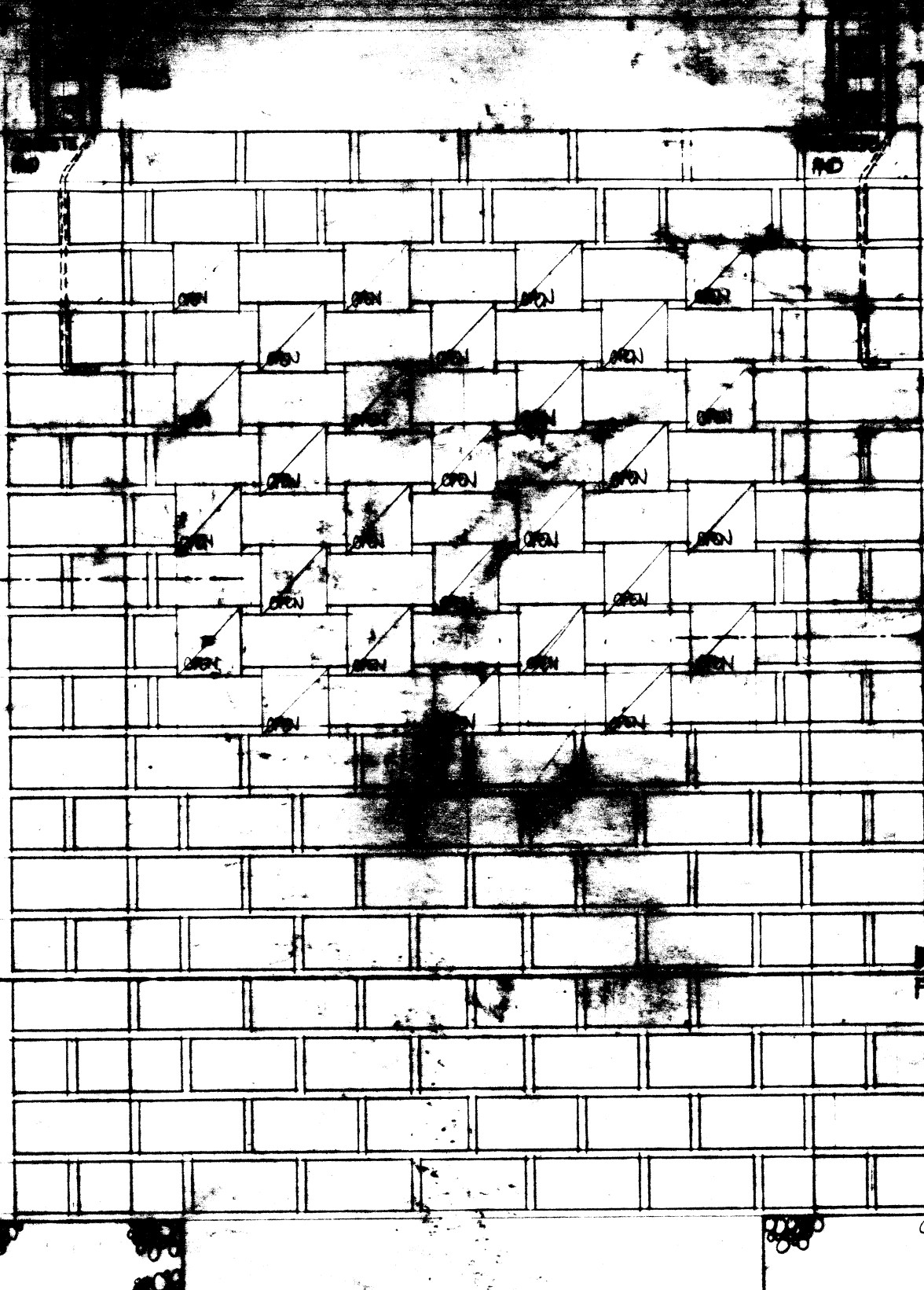
SECTION at B

RURAL PRIMARY
SCHOOLS
3 CLASSROOM UNIT
SANDCRETE BLOCKS/5

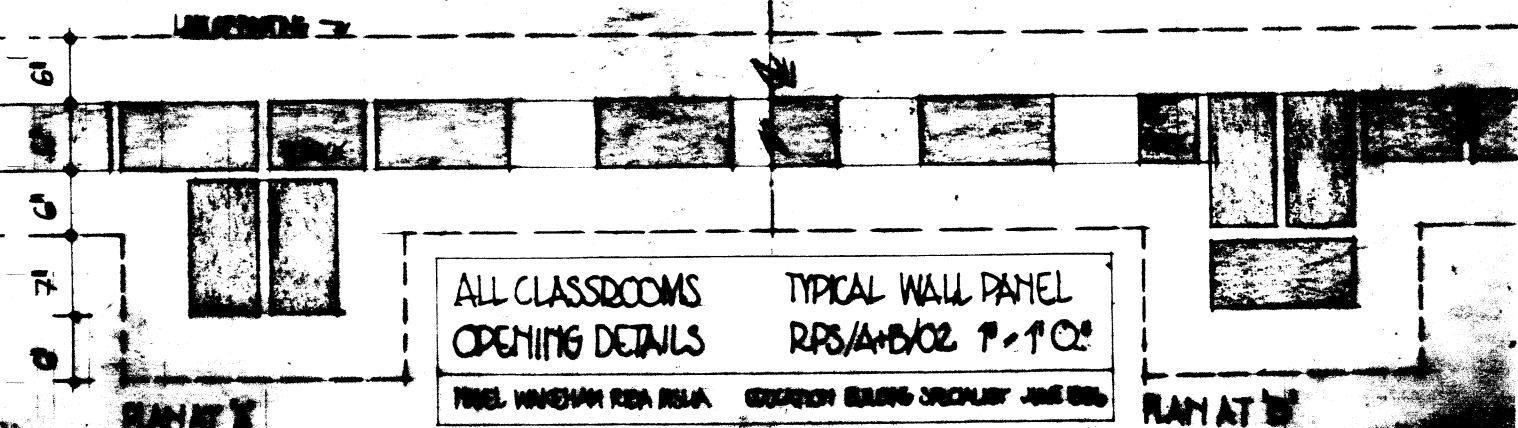
1/4" / 1"0"

june 1966

8 COURSES 4'6"
4 COURSES 2'4"
4 COURSES 2'4"
1'8"



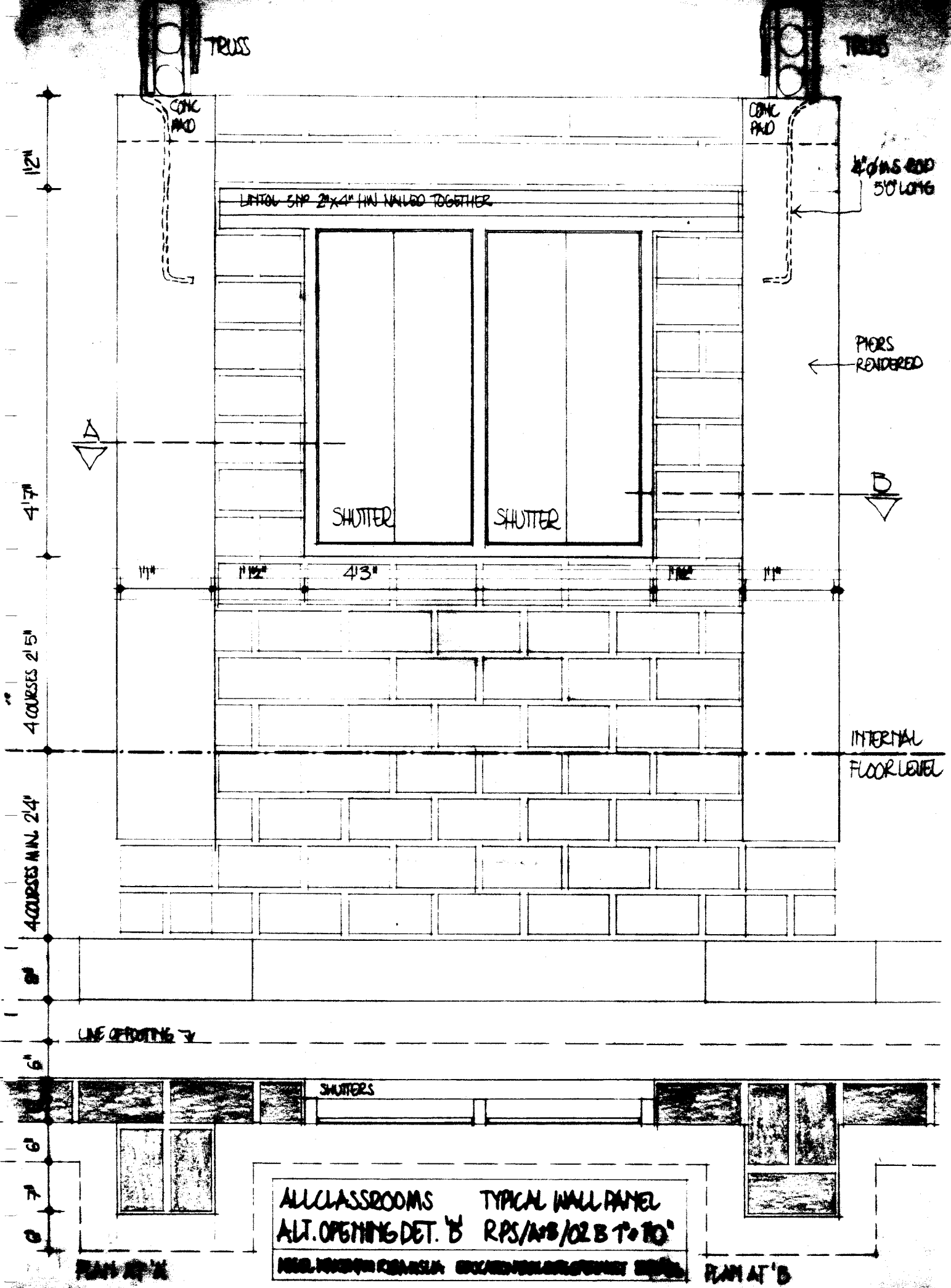
INTERNAL FLOOR LEVEL

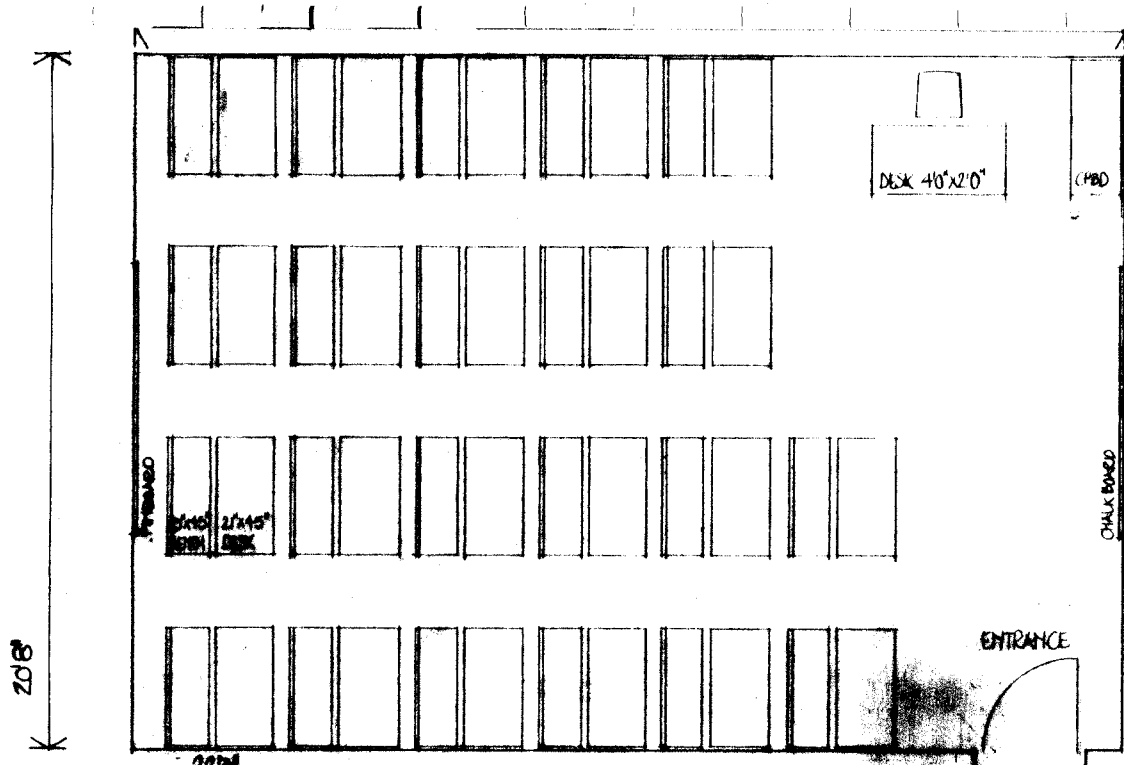


ALL CLASSROOMS
OPENING DETAILS
TYPICAL WALL PANEL
RPS/A+B/02 P-102
FIBER WINDHAM REA REJA

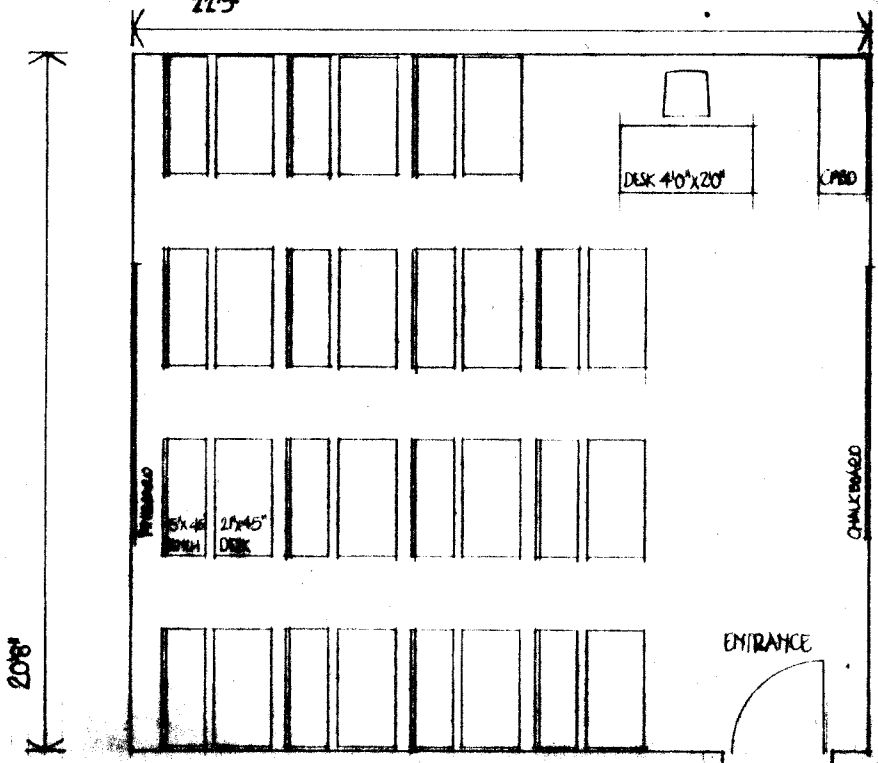
PLAN AT A-A

PLAN AT B-B





CLASSROOM TYPE A
 SIZE : 20'8" x 22'9"
 AREA : 616.5 sqft [57 sq metres]
 N° OF PUPILS : 44
 AREA PER PUPIL : 14 sqft [1.3 sq metres]
 DOUBLE DESK : 3'6" x 1'9"
 DOUBLE BENCH : 3'6" x 1'3"



CLASSROOM TYPE B
 SIZE : 20'8" x 22'3"
 AREA : 460 sqft [42.5 sq metres]
 N° OF PUPILS : 30
 AREA PER PUPIL : 15.3 sqft [1.4 sq metres]
 DESKS/BENCHES AS TYPE A



CLASSROOM LAYOUT :

SIZE : $19'10\frac{1}{2}" \times 26'3"$
 AREA : 521.72 sq. ft.
 NO OF PUPILS : 44
 AREA PER PUPIL : 11.85 sq. ft.

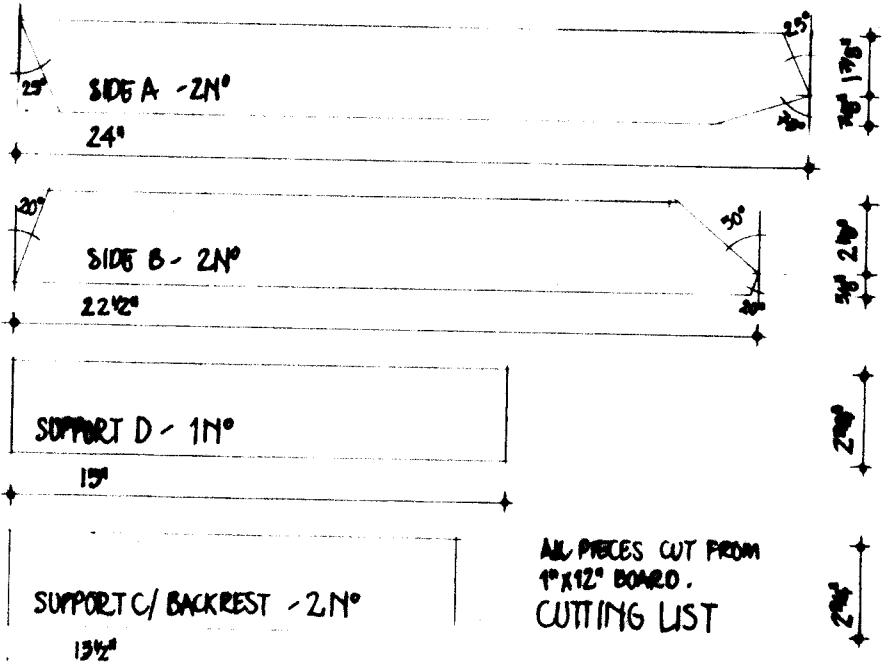
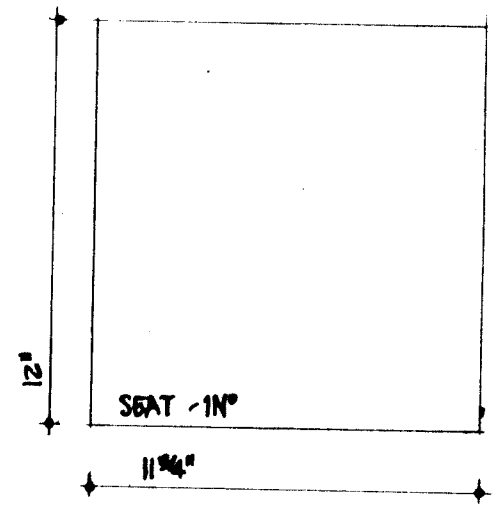
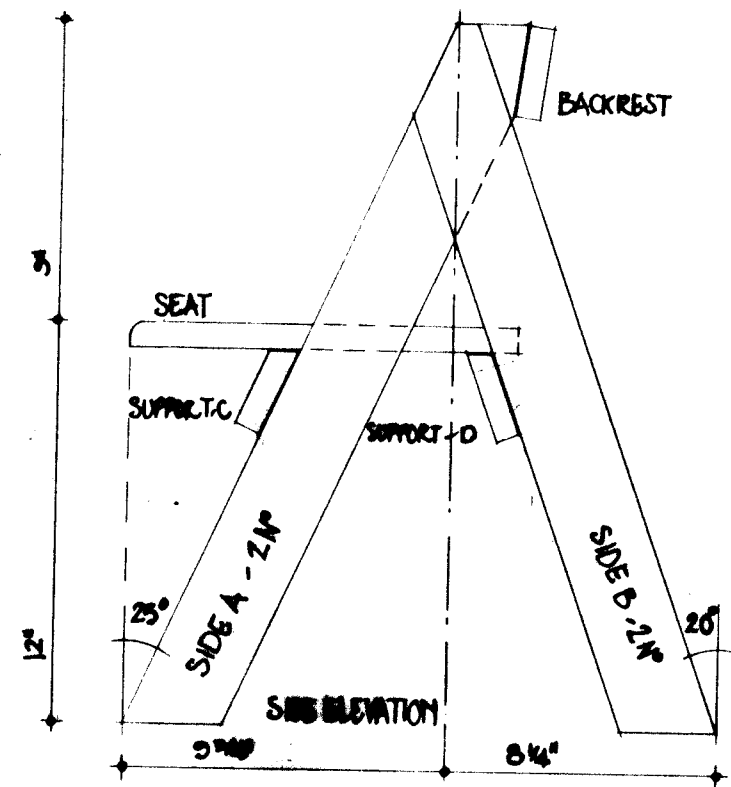
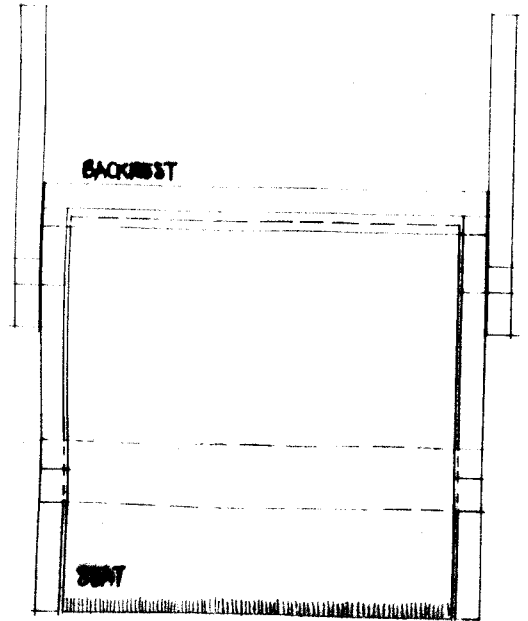
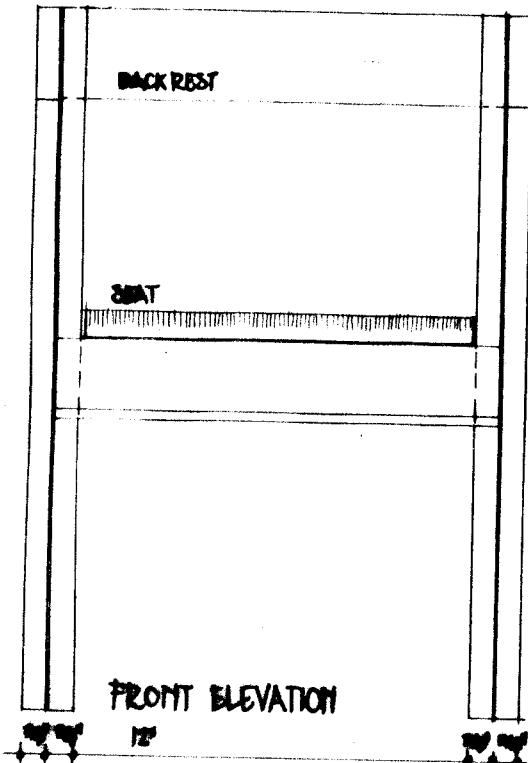
DESK SIZE : $1'6" \times 3'8"$
 AISLE WIDTH : $1'8\frac{1}{2}"$
 SPACE BETWEEN DESKS : $1'9"$

MINIMUM VIEWING ANGLE TO BLACK BOARD : 33

REVISED STANDARD CLASSROOM DESK

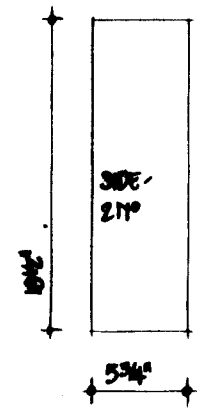
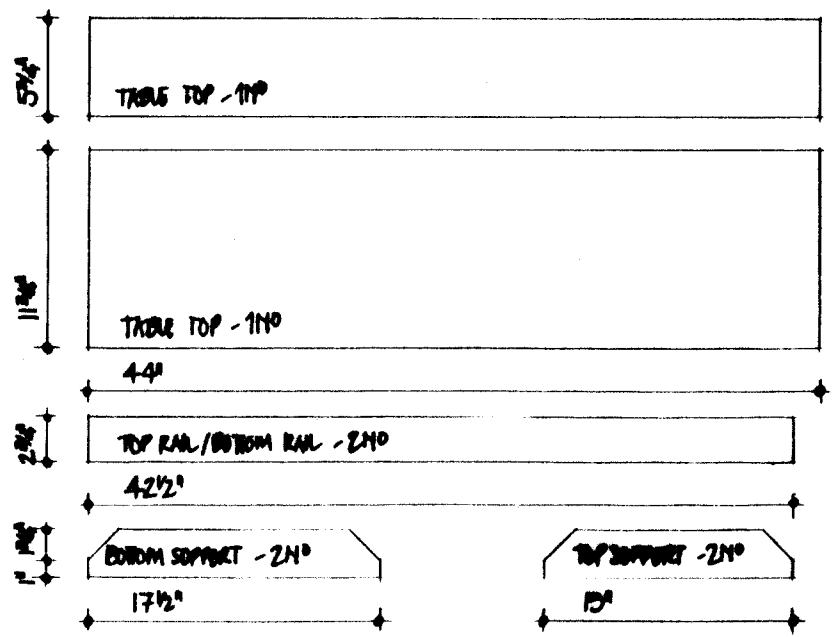
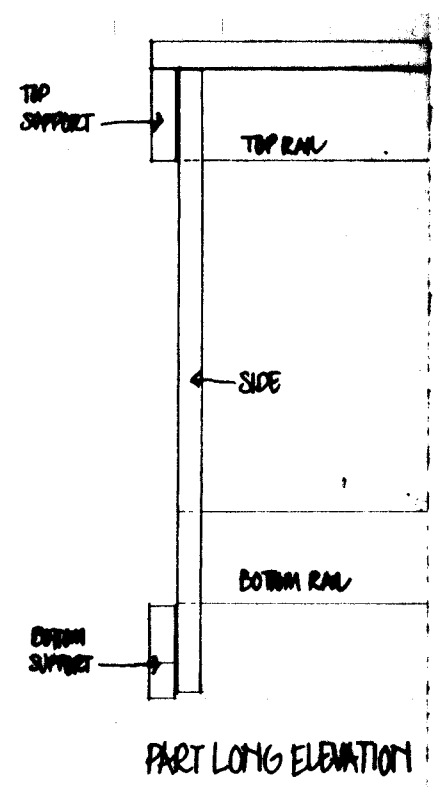
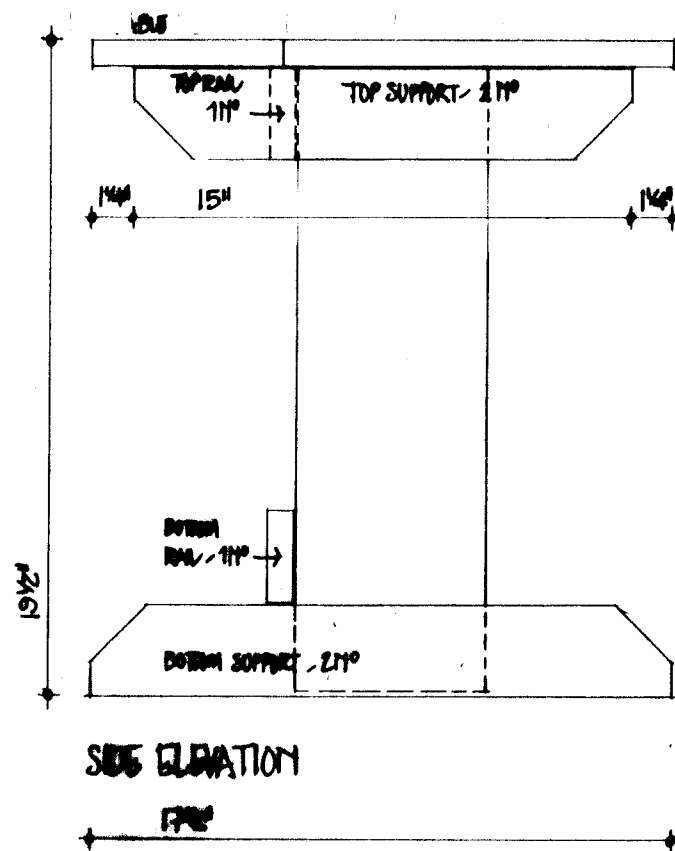
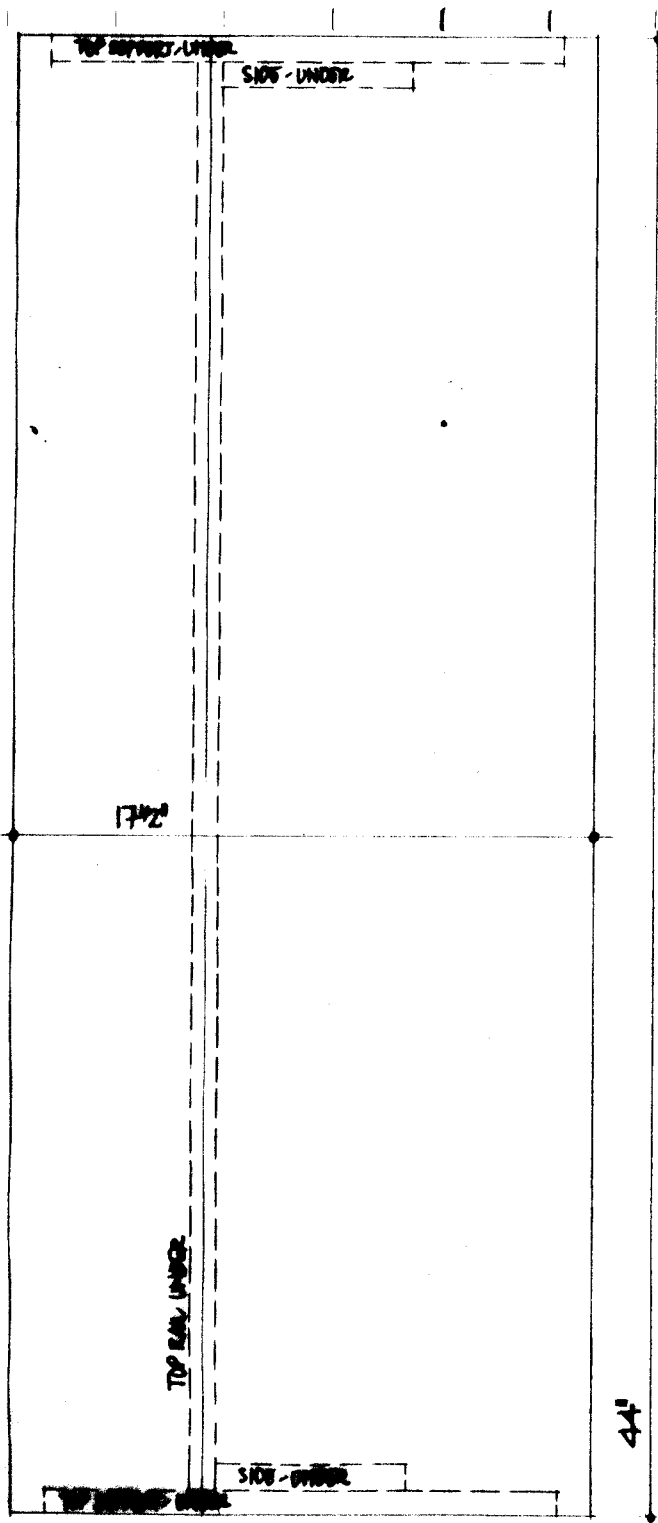
$12" \times 1'0"$

BR/CL/1001

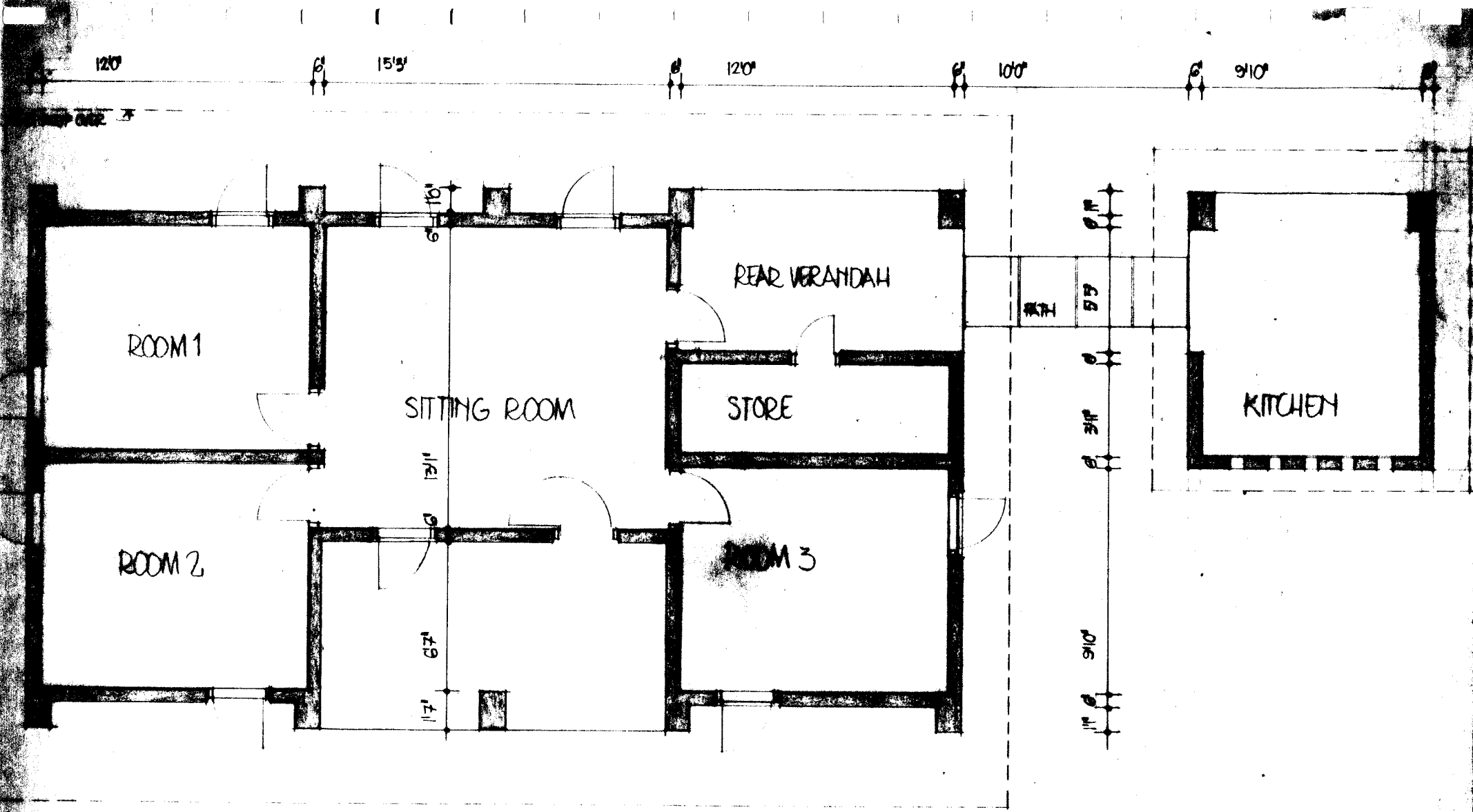


ALL PIECES CUT FROM
1" X 12" BOARD.
CUTTING LIST

PROTOTYPE CHAIR
SIZE 1: 6-9 YEARS
RPS/F/010

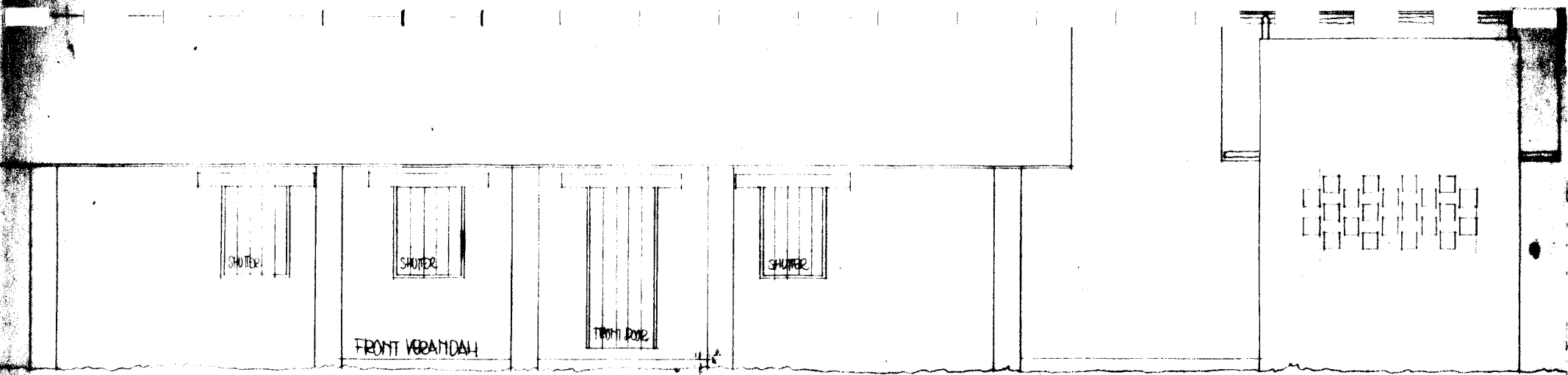


PROTOTYPE DESK
 SIZE 1: 6-9 YEARS
 RPS / F / 012
 1/4 FULL SIZE



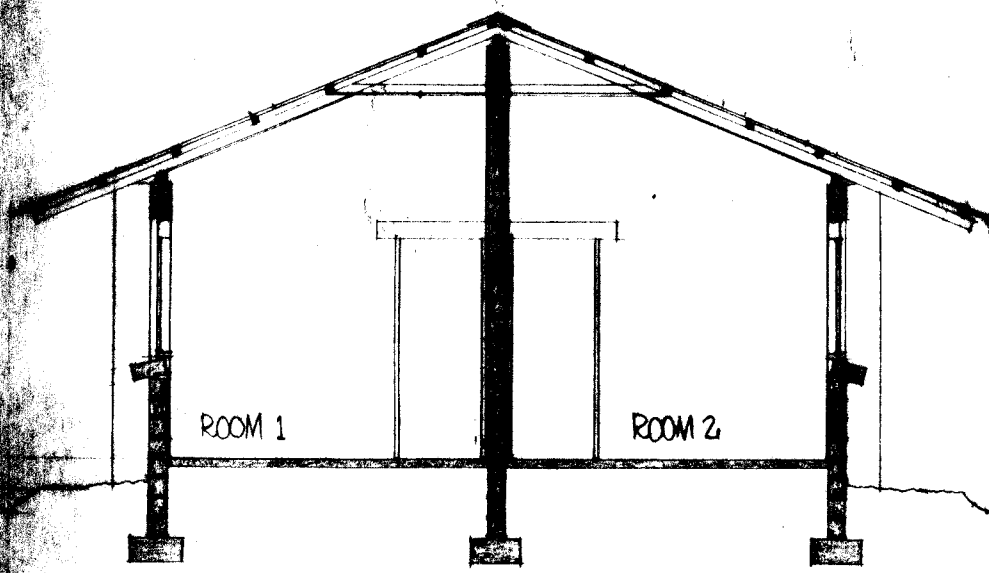
FLOOR PLAN

SL/IDA 3RD EDUCATION PROJECT
 PROTOTYPE RURAL PRIMARY SCHOOLS
 STAFF HOUSE
 FLOOR PLAN RPS/SH/01 44.110'
 MODEL DRAWING FOR CONSTRUCTION DURING SPECIALIST SUPPLY

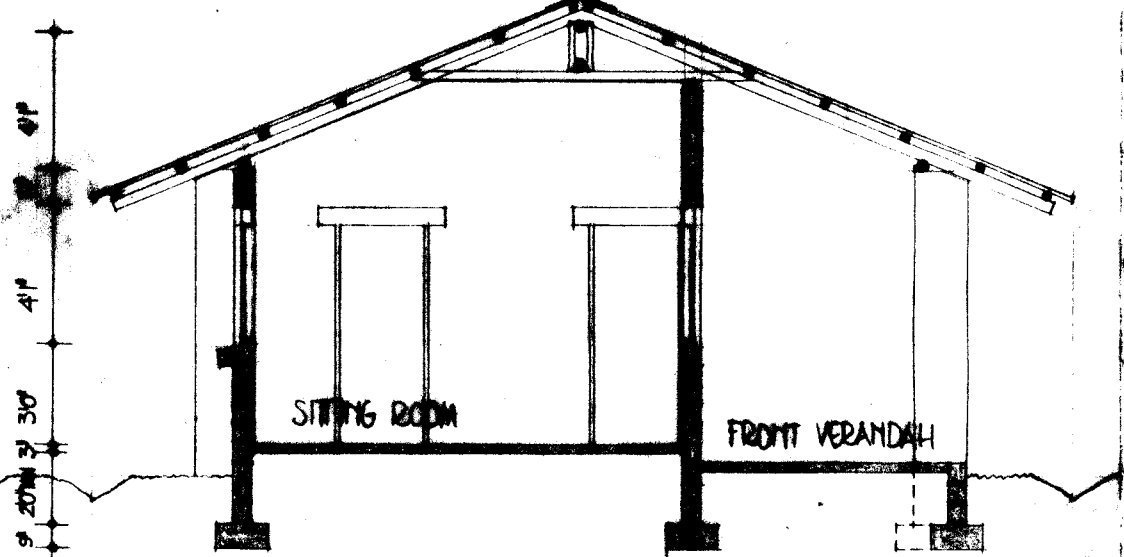


FRONT ELEVATION

KITCHEN



SECTION AT A



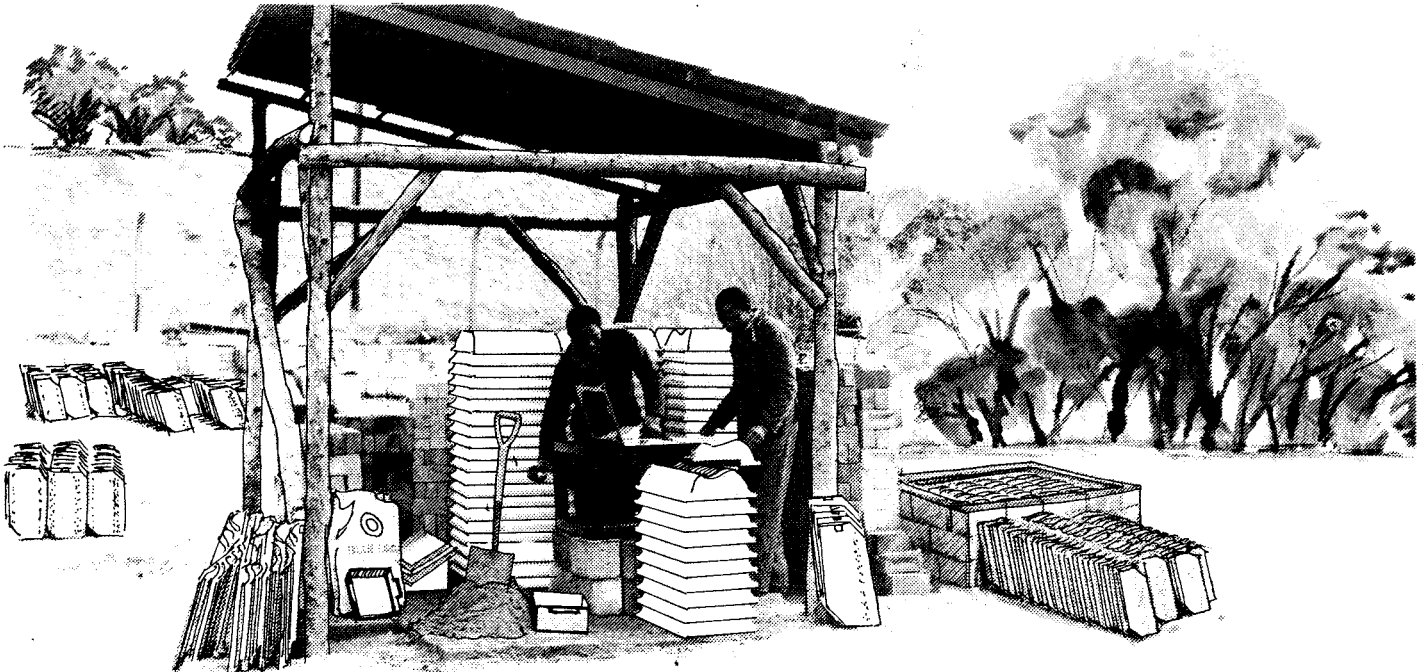
SECTION AT D

SL/DA 3rd EDUCATION PROJECT
 PROTOTYPE RURAL PRIMARY SCHOOLS
 STAFF HOUSE
 SECTIONS/ELEVATIONS RPS/SH/02 10/10
 100% COMPLETE

**Now
Introducing**

**The HP
'500'**

**Only
£1720
F.O.B.**



500 high quality roof tiles a week from a completely hand powered production plant

- Makes 100 tiles in 4 hours consuming only 1 bag of cement, 150 kilos of sand, and up to 2 kilos of chopped fibre.
- Robust and well-engineered for rapid, reliable production with two operators.
- Spare parts supplied, easily fitted, rarely needed.
- Comprehensive users' manual provided with every plant incorporates 10 years' experience.
- Training, if required, can be provided at our U.K. workshop and at certain overseas locations.
- Full technical back-up services to customers.



THE HAND POWERED VIBRATION SCREEDING MACHINE

- ★ Heavy duty construction
- ★ Well proven vibration mechanism (incorporating the key components of our electrically-powered machines)
- ★ Independent of all power sources but completely replicates the functions of the electric vibrating machine

**Operates anywhere
with 50 square
metres of work space**

3 ALTERNATIVE PRICES AND SCALES OF OPERATION

1. HP 250 hand powered machine 50 moulds Ancillary pack	£990 FOB Pack weight 124 kgs Box dimensions 66 x 84 x 90cms
2. HP 500 1 machine 100 moulds Ancillary pack	£1720 FOB Pack weight 155 kgs Box dimensions 66 x 73 x 112cms
3. HP 1000 1 machine in full size work station 200 moulds Ancillary pack	£2540 FOB Pack weight 291 kgs Box dimensions 121 x 66 x 108cms

Optional extra:
Conversion kit to alter plant to operate on 12 volt DC. electric power

£60

**PARRY
ASSOCIATES**

**INTERMEDIATE TECHNOLOGY
WORKSHOPS**

J.P.M. Parry & Associates Ltd.,
Overend Road, Cradley Heath,
West Midlands B64 7DD. U.K.
Telephone: (0384) 69171 (3 lines)
Telex: 334132 IT PARR-G