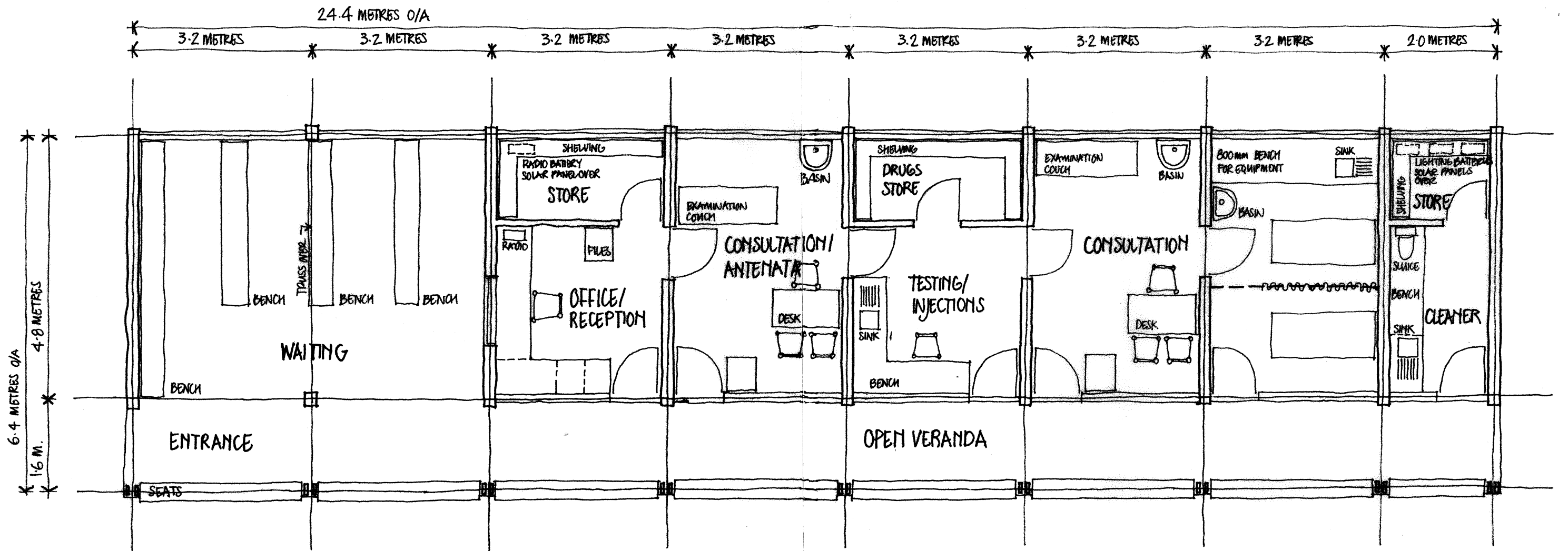
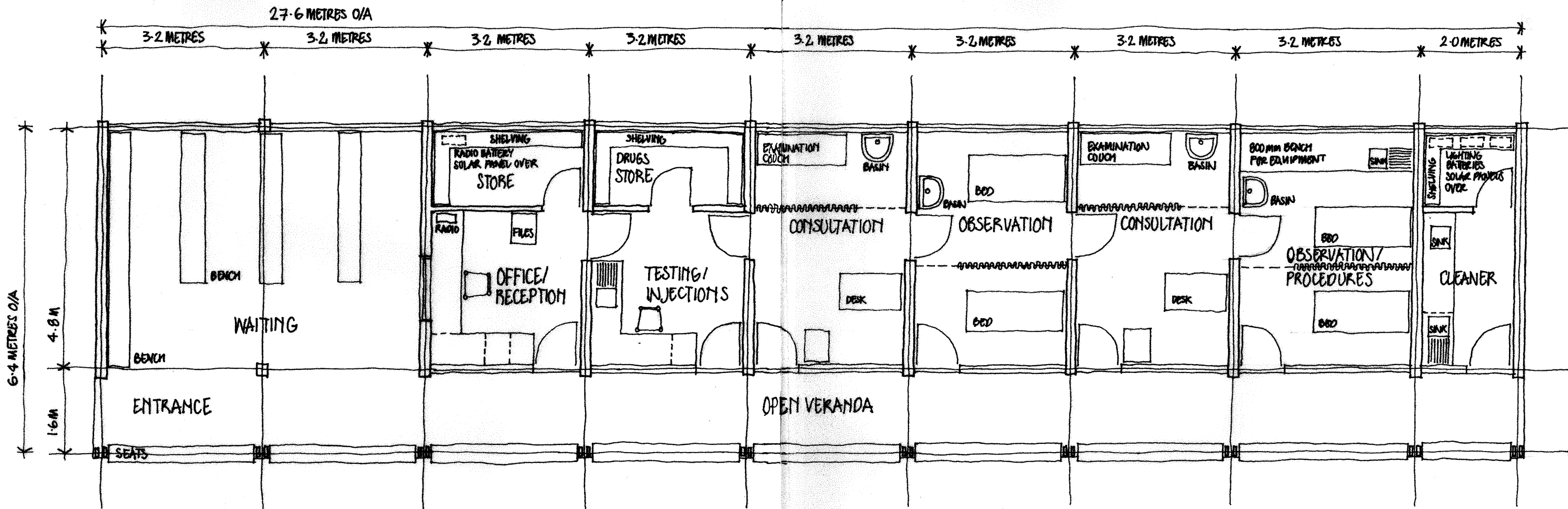


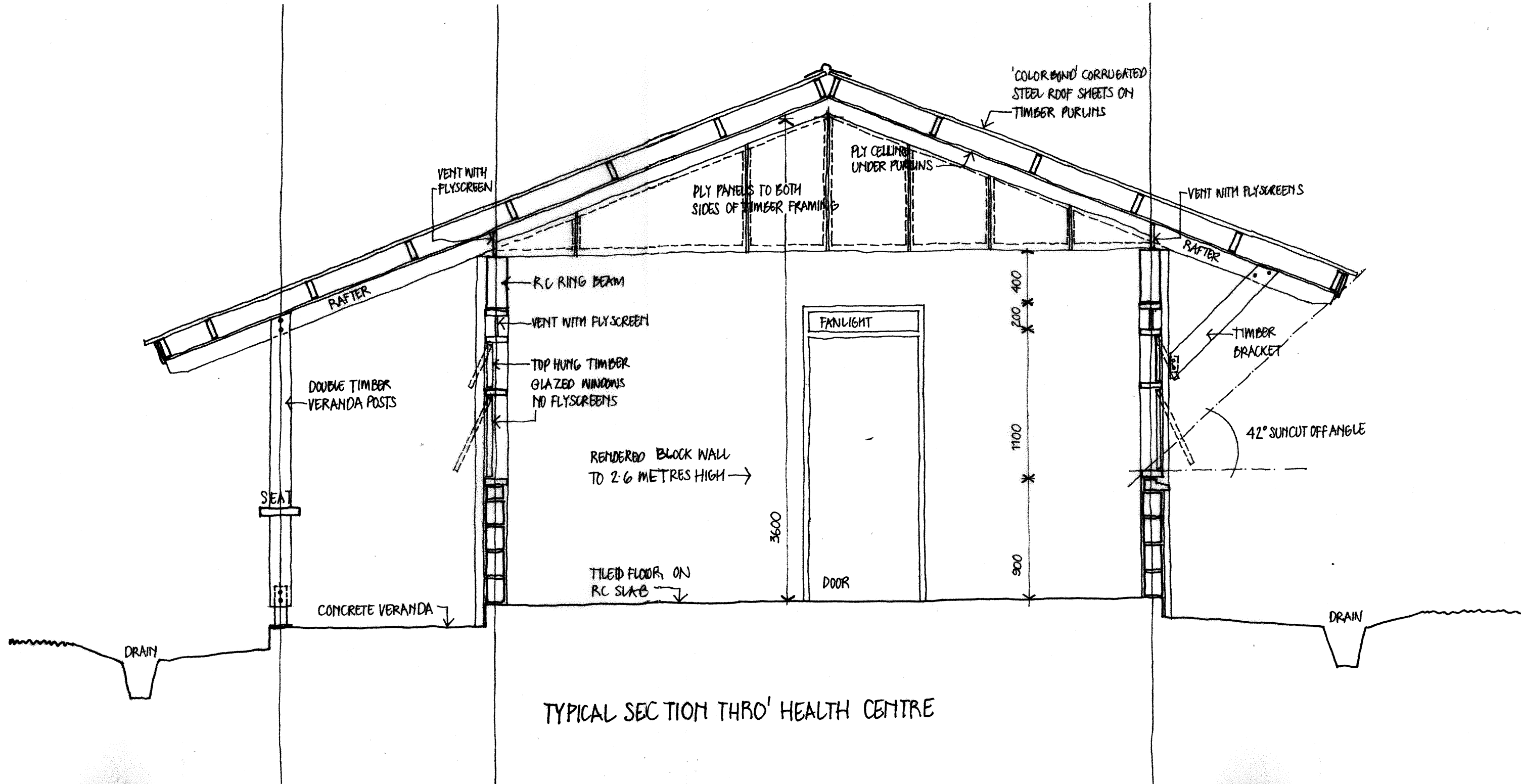
COMMUNITY HEALTH CENTRE - ONE CONSULTATION ROOM + ONE TREATMENT ROOM - TYPE A



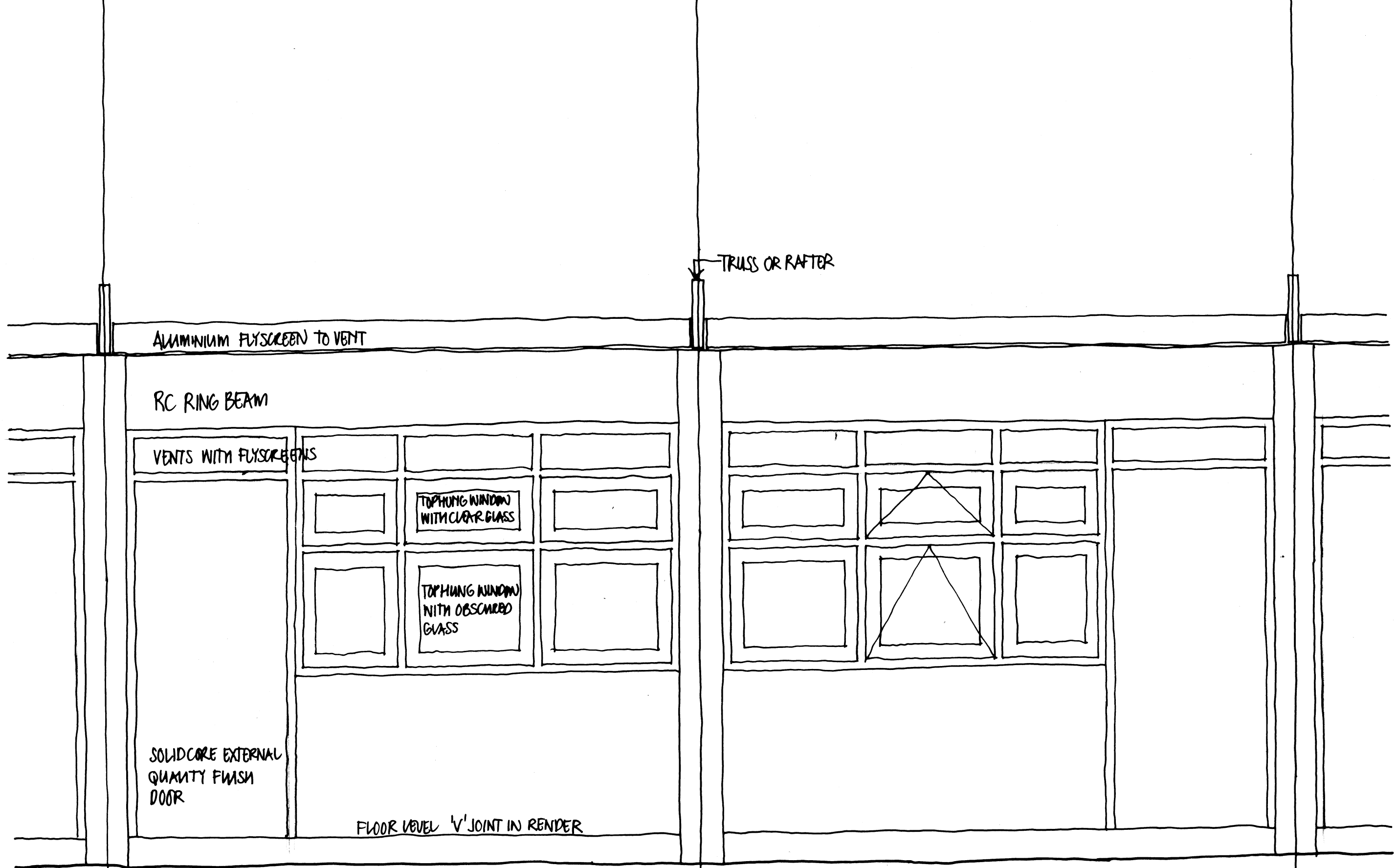
COMMUNITY HEALTH CENTRE - TWO CONSULTATION ROOMS + ONE TREATMENT ROOM - TYPE B



COMMUNITY HEALTH CENTRE - TYPE C - TWO CONSULTATION ROOMS + TWO OBSERVATION ROOMS



TYPICAL SECTION THRO' HEALTH CENTRE

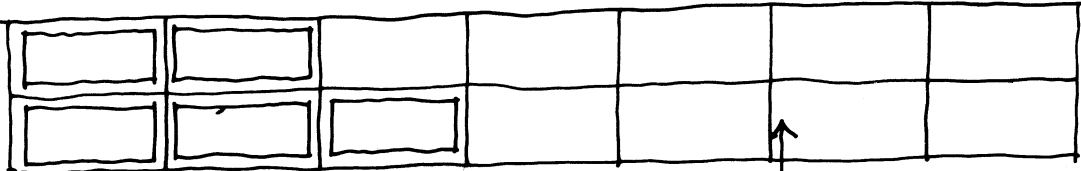


PART FRONT ELEVATION WITH TOP-HUNG TIMBER WINDOWS

← TRUSS OR RAFTER

ALUMINIUM FLYSCREEN TO VENT

RC RING BEAM



TWO COURSES OF VENT BLOCKS
TO STORES WITH ALUMINIUM FLYSCREEN BEHIND

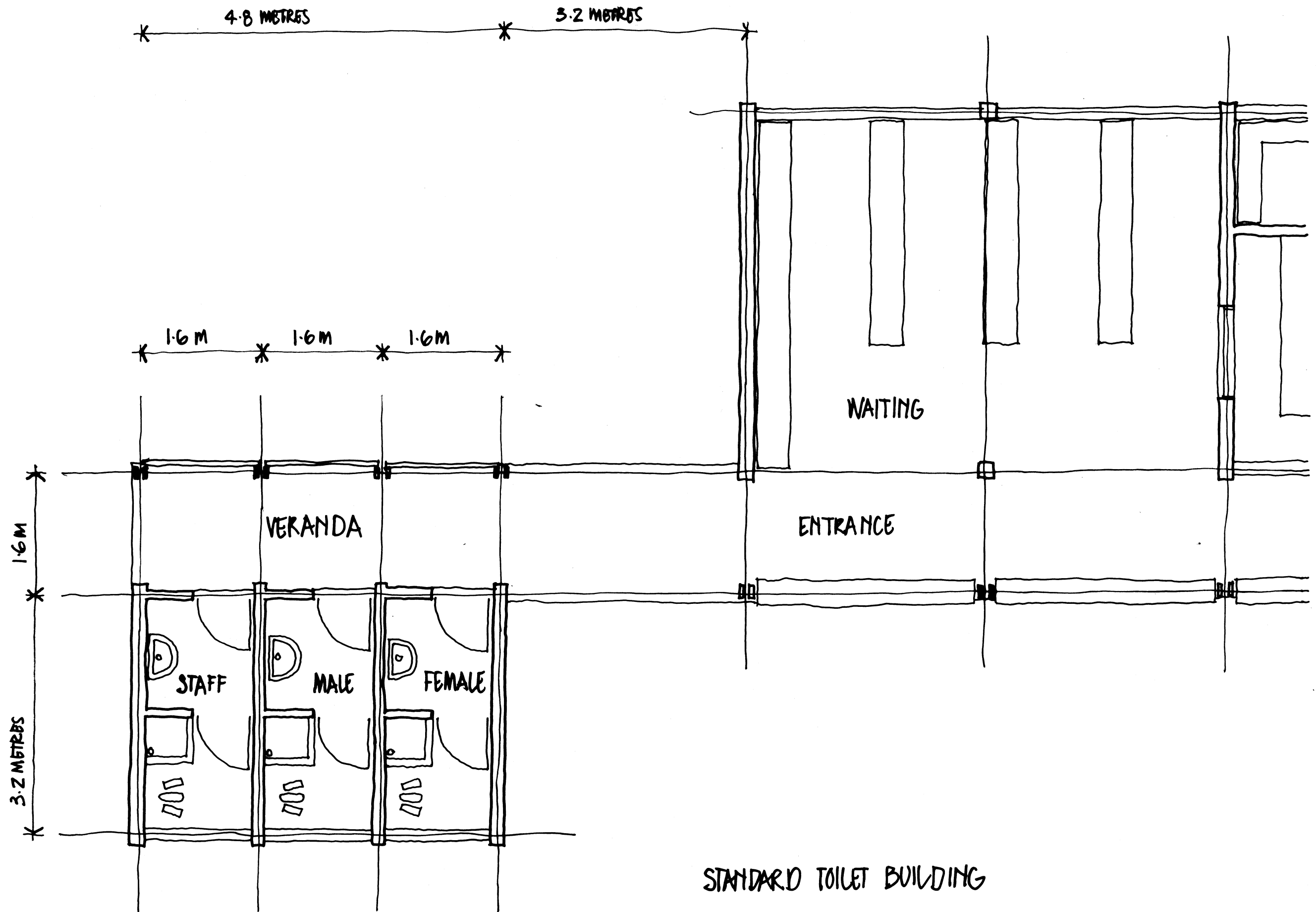
VENTS WITH FLYSCREEN

TOP HUNG WINDOW
WITH CLEAR GLASS

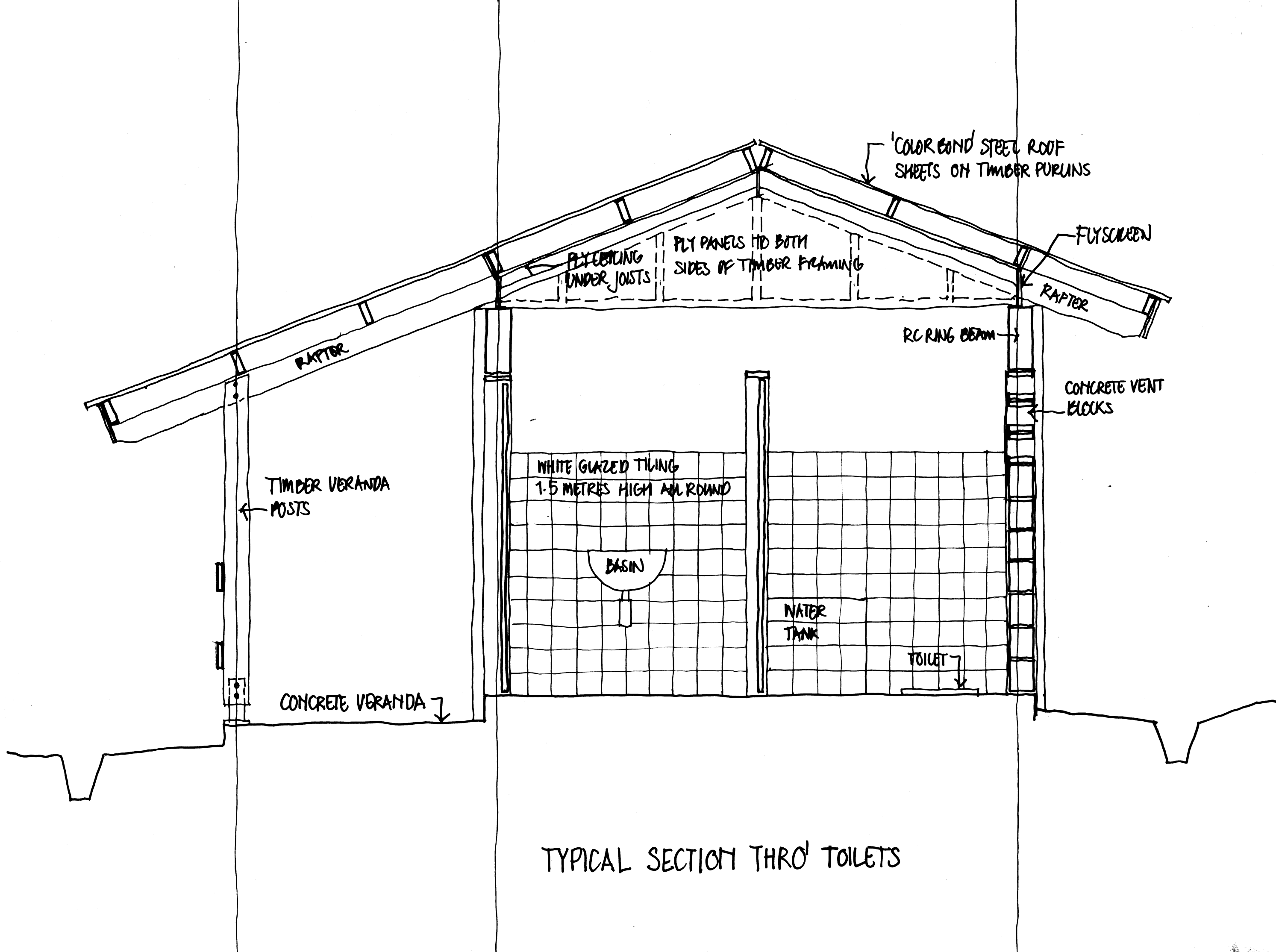
TOP HUNG WINDOW
WITH OBSCURED
GLASS

'V' JOINT IN RENDER

PART REAR ELEVATION WITH TOP-HUNG TIMBER WINDOWS

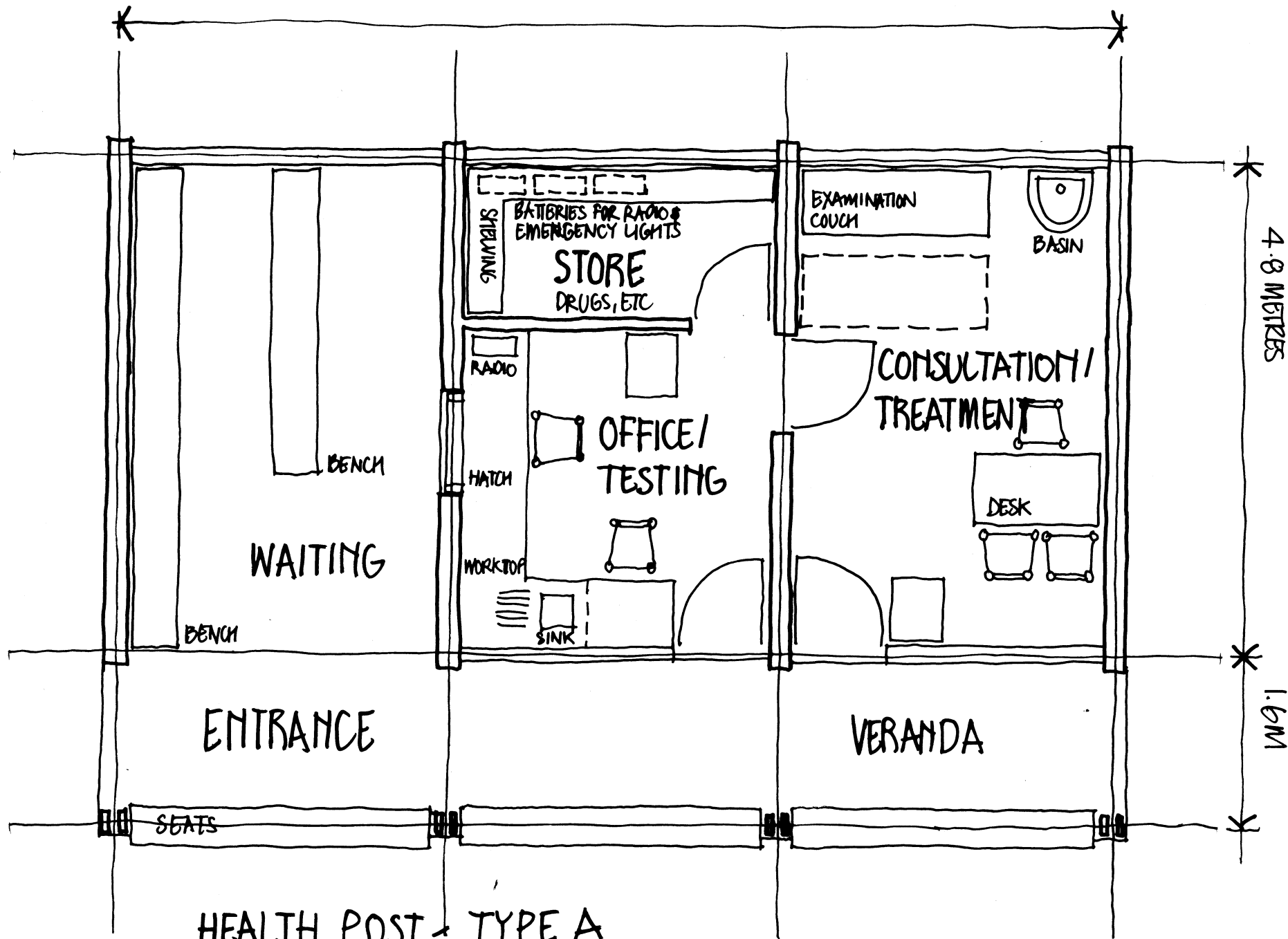


STANDARD TOILET BUILDING



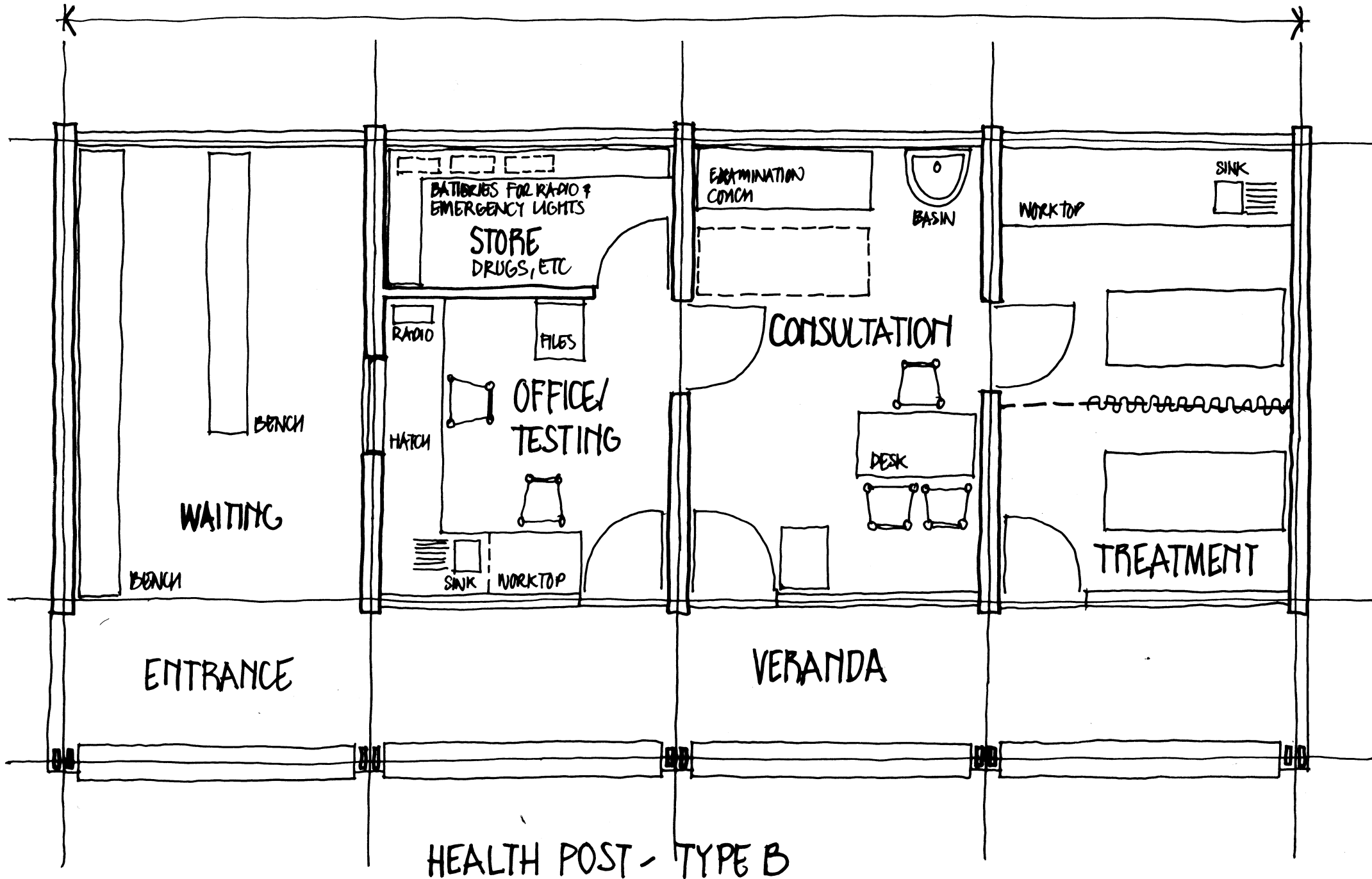
TYPICAL SECTION THRO' TOILETS

9.6 METRES O/A



HEALTH POST - TYPE A

12.8 METRES O/A



HEALTH POST - TYPE B