

LIBERIA: PRE-SCHOOL PROPOSALS FOR THE PROPOSED WORLD BANK EPA-FTI CF PROJECT

General

Proposals have been developed for pre-schools to be constructed under the project on the site of existing primary schools. These proposals are at a very preliminary stage and have been developed in order to establish a budget for inclusion in the project proposals.

The proposals envisage the provision of two group/play rooms accommodating up to 30 children up to the age of 5 in K1 and K2

Sites

Children should if possible not have to walk further than ½ a kilometre to reach a pre-school. If the pre-school is on the same site as a primary school it should be kept separate from the primary school with a fence and have separate toilets and play areas.

If a pre-school shares a site with a primary school, an area of 15m² (162ft²) per pupil should be allowed for the pre-school.

Accommodation

The following accommodation has been provided in the proposed pre-schools:

- 2 large group rooms/playrooms;
- An office/store;
- large, covered verandas outside the group rooms with provision for wet play;
- VIP latrine: 1 for boys, 1 for girls and 1 for staff;
- A well and pump.

If a kitchen is required for the preparation of food for the children then this should take the form of a traditional kitchen built in the grounds of the pre-school.

The group rooms/playrooms are 39' 6" x 20' 0" and should accommodate 30 children each (2.4m²/26ft²/child). This does not include the covered veranda space outside each group room.

The group rooms/playrooms will provide space for a variety of activities which could include:

- Table work
- A games corner: with cards, found objects, puzzles, etc

- A quiet corner: with books, a comfortable seat, cushion or mats, for reading, being read to, looking at pictures, looking out of the window.
- A drawing corner: with pencil and paper and tables.
- A painting corner: with paper, pencils, paint, crayons, modelling clay, glue, tables to work on.
- A craft corner: with needles and thread, nuts and bolts and tables; for sewing and stitching, cutting paper and fabric, weaving and other handicrafts.
- A construction corner: with blocks of wood, cardboard boxes, tins, toys, etc.
- A role-playing corner: with boxes or cupboards for storage for dressing up, playing house, playing shop, etc.

The group rooms will provide a large area of unobstructed space so that many of the activities can take place on the floor. Partitions or furniture such as bookshelves and display units will be moveable and will be used to define the different areas. Space will be provided on walls for the display of the children's own art and craft work together with pictures, posters, charts, maps, etc and storage and display areas for three dimensional objects such as toys, geometric shapes, science materials, etc.

An important part of teaching and play involves the use of water, sand, clay and other messy materials and the outside covered verandas will provide space for messy activities and will be provided with a sink which, if there is no running water, will be filled with buckets from the well.

The layout of a typical group room/playroom is shown in Figure 1. The layout of the proposed pre-school building is shown in Figure 2.

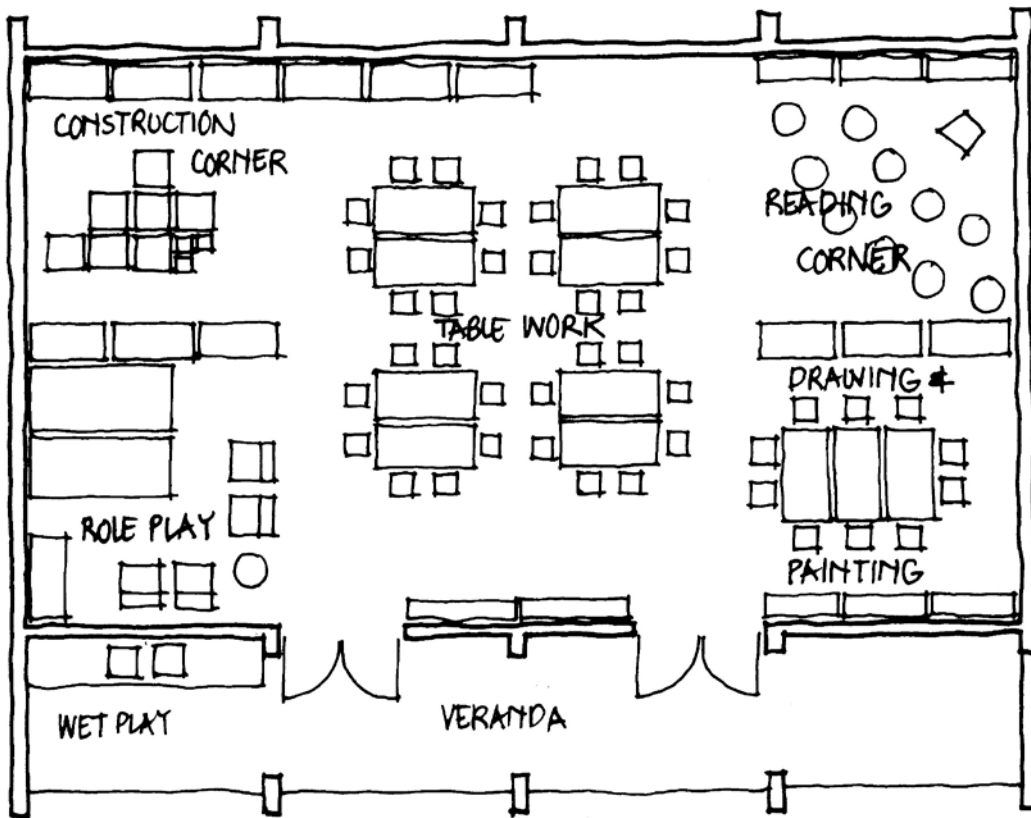


Figure 1: layout of typical group room/playroom

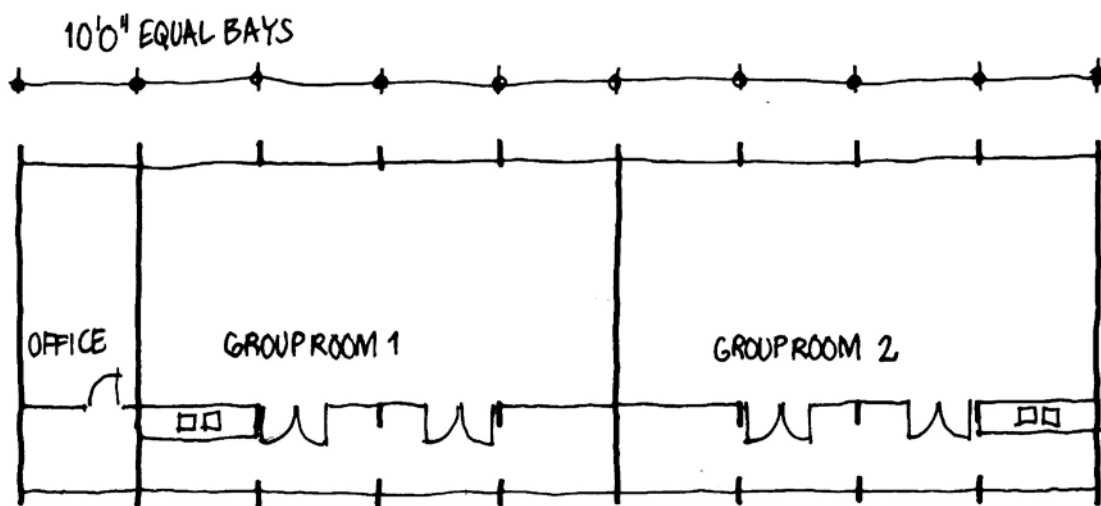


Figure 2: Layout of proposed pre-school