

FIG 3: SUGGESTED 2 METRE CONSTRUCTION MODULE TYPICAL DETAILS

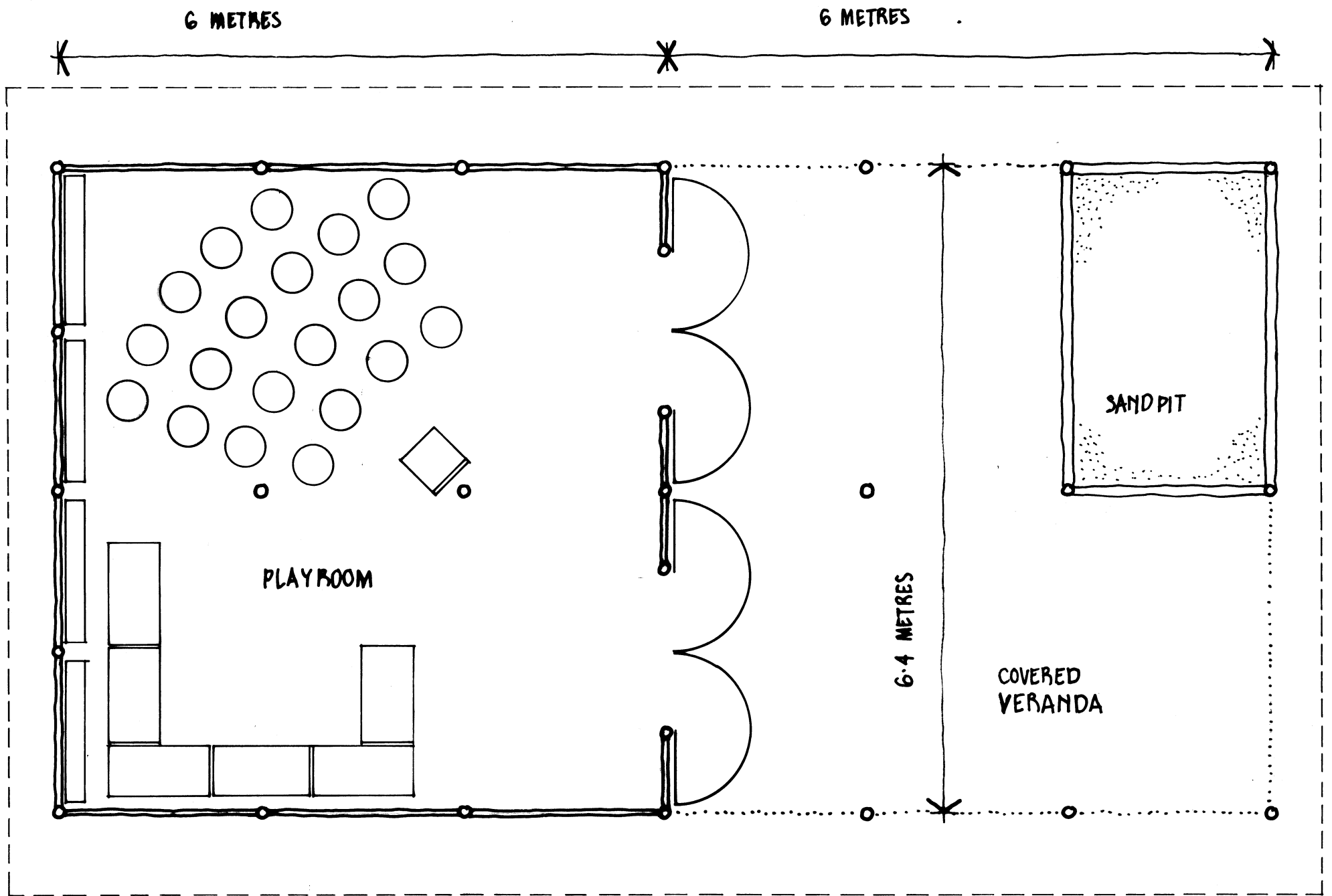
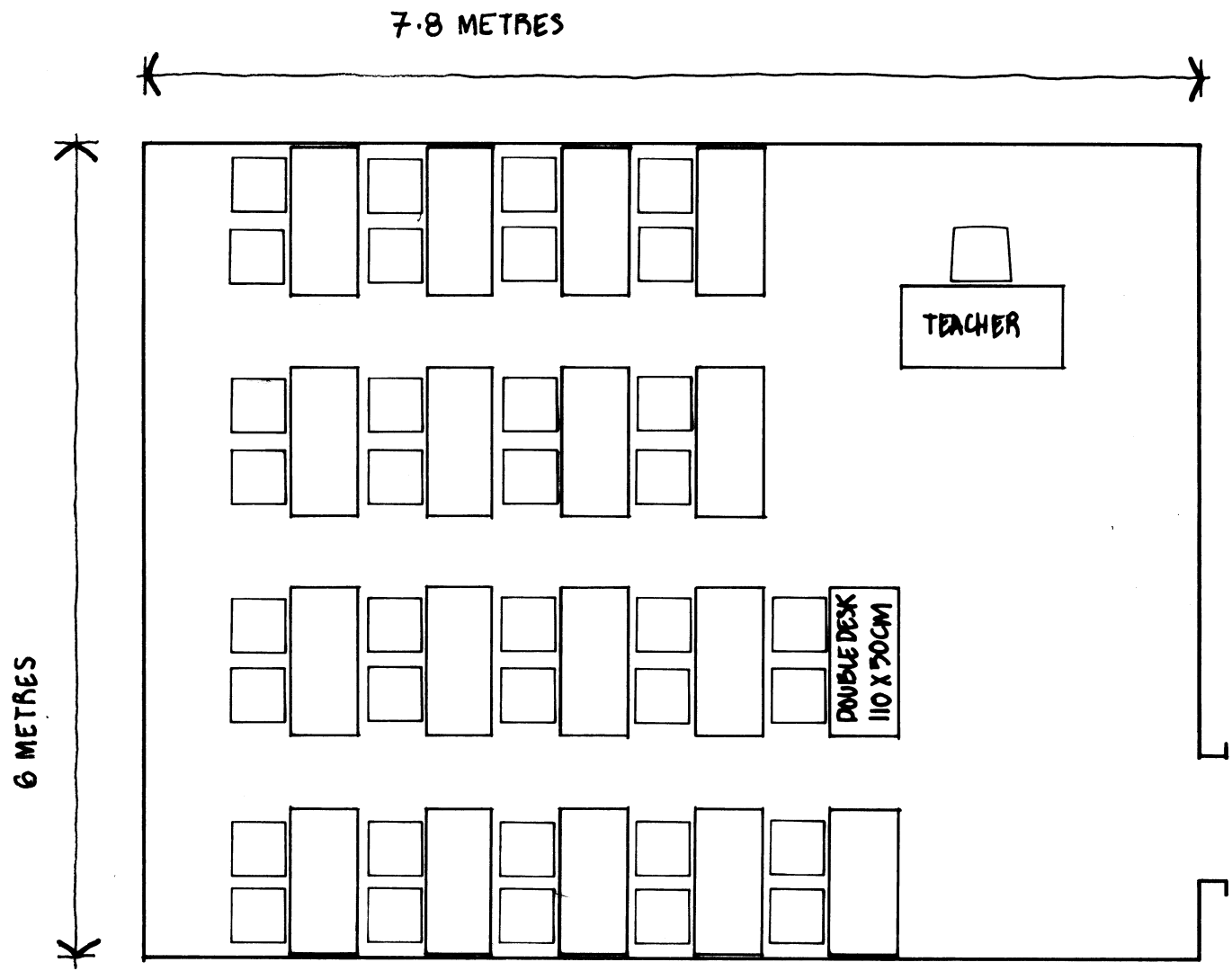
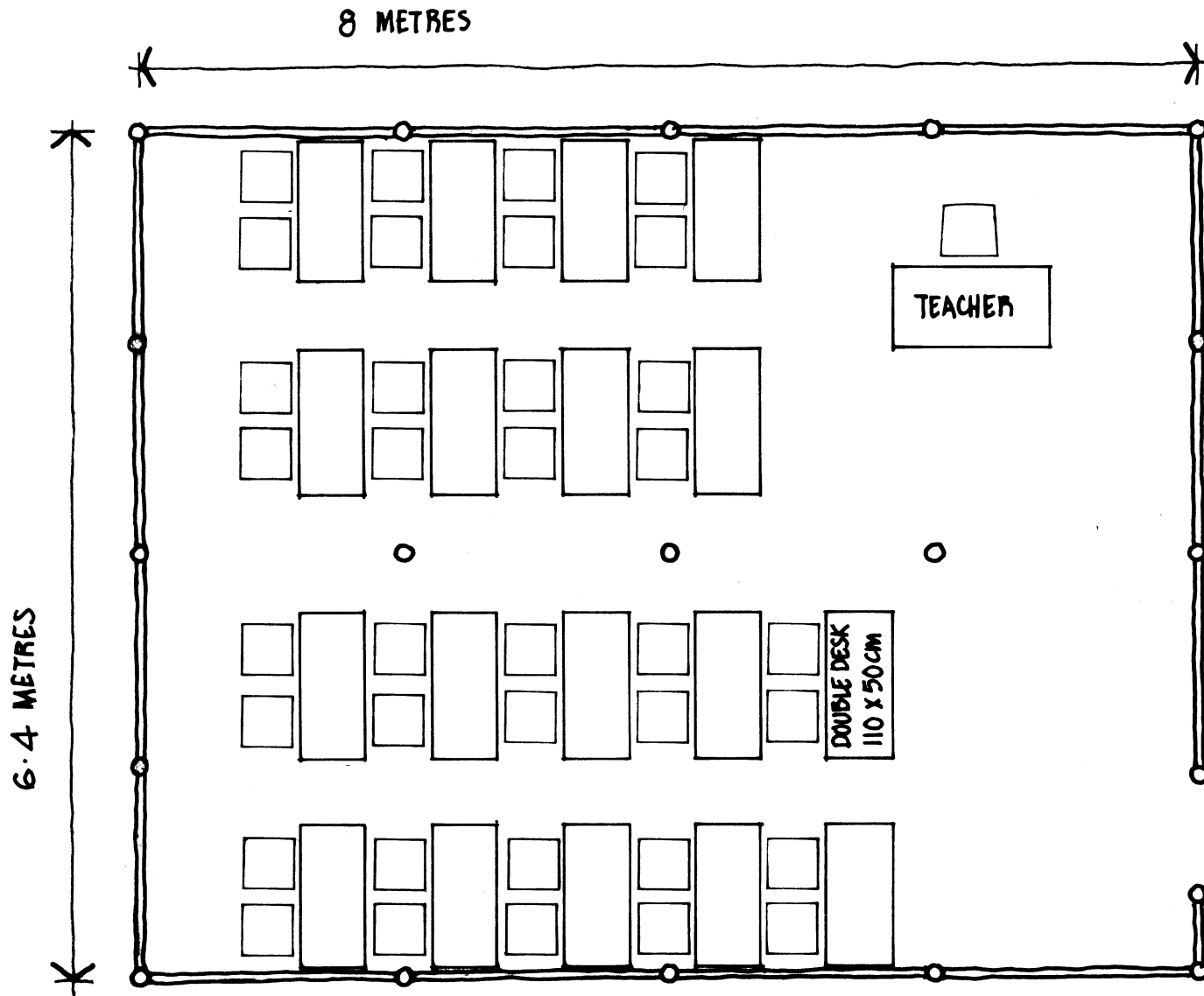


FIG 4: PROPOSED PRE-SCHOOL LAYOUT



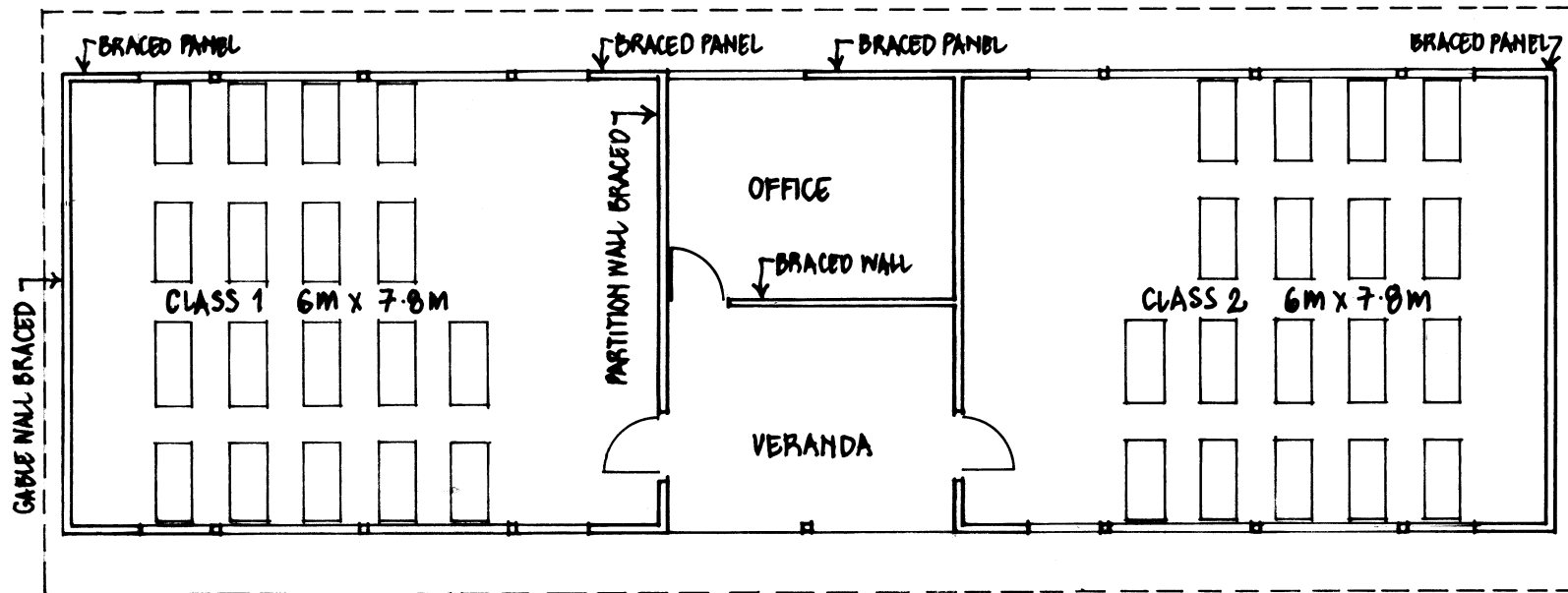
AREA 46.8 m² 1.3 m²/PUPIL SCALE 1:50

FIG5 : COMMUNITY SCHOOL : STANDARD CLASSROOM LAYOUT

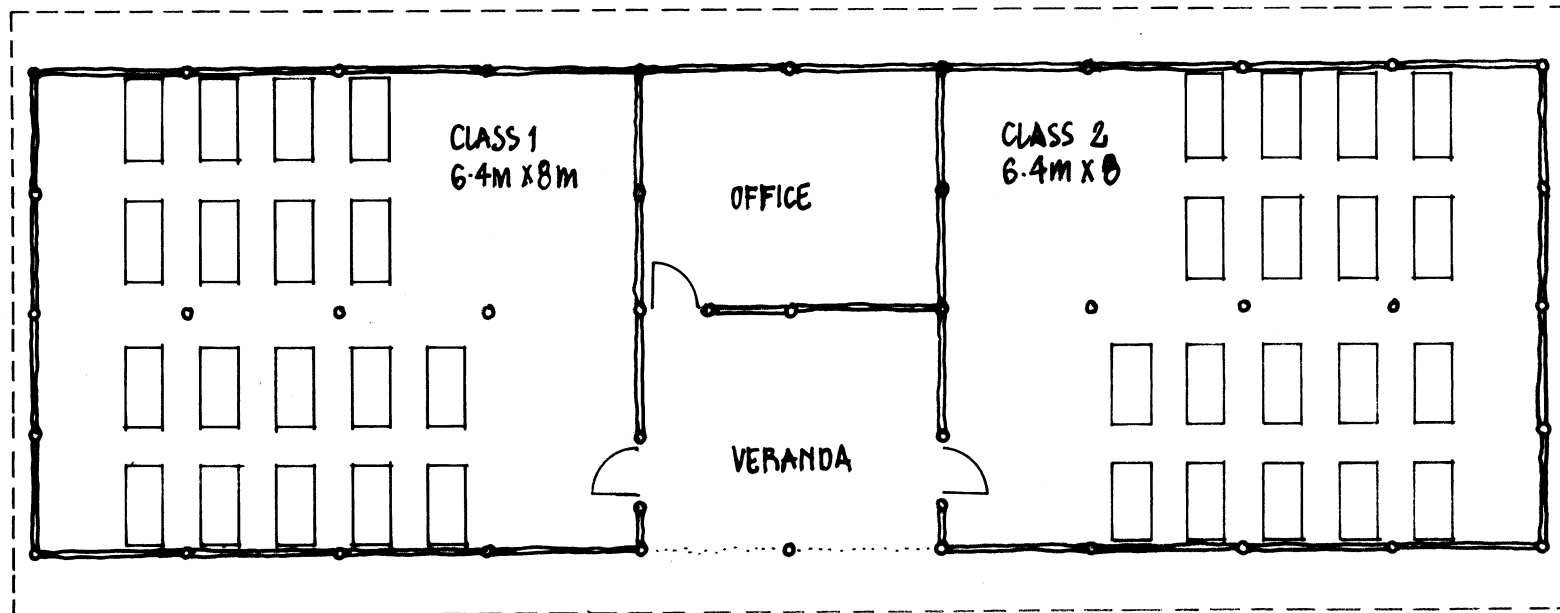


AREA 51.2 m^2 $1.42 \text{ m}^2/\text{PUPIL}$ SCALE 1:50

FIG 6: COMMUNITY SCHOOL: CLASSROOM CONSTRUCTED OF TRADITIONAL MATERIALS

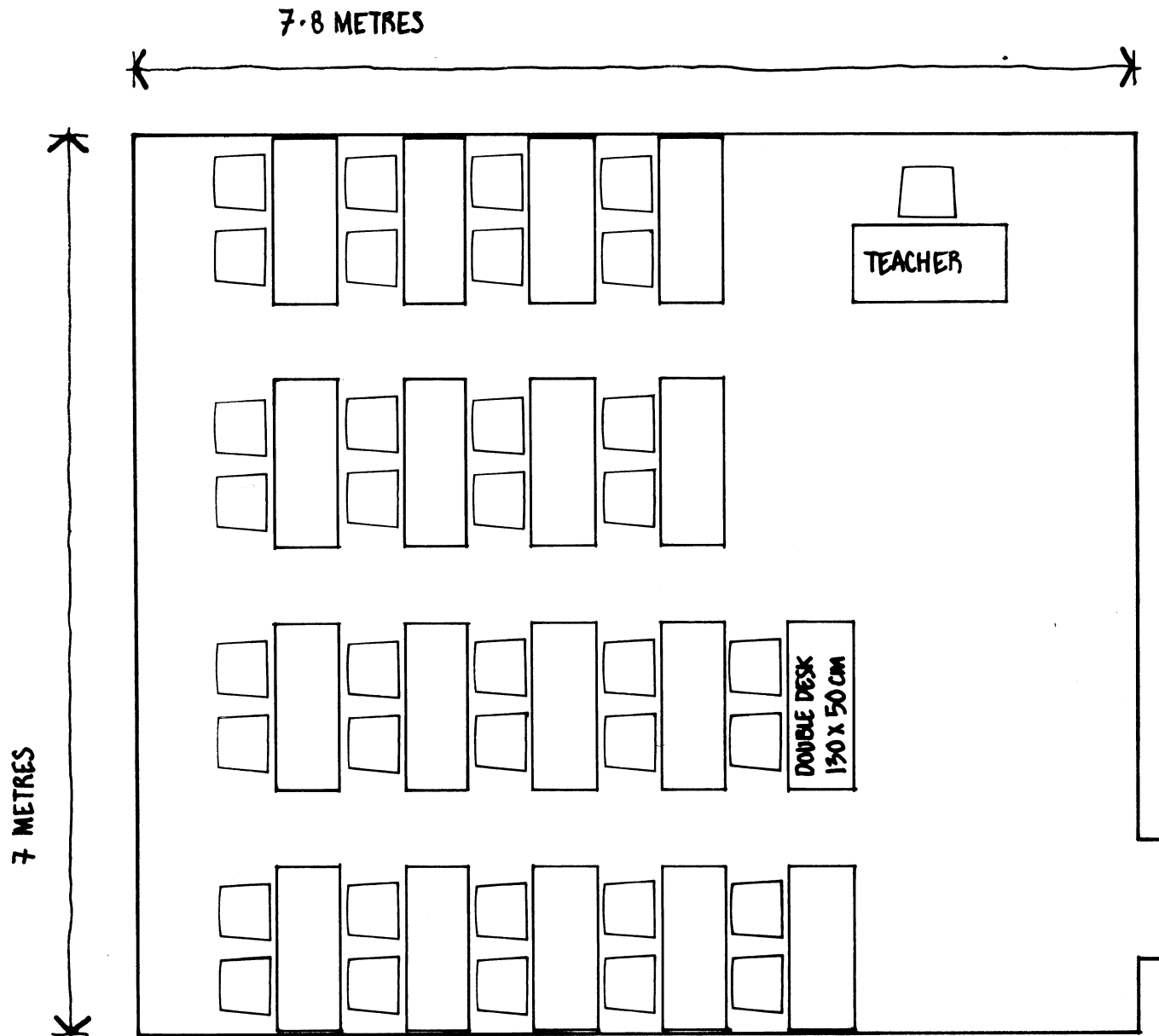


SEMI-PERMANENT BUILDING FLOOR PLAN SCALE 1:100



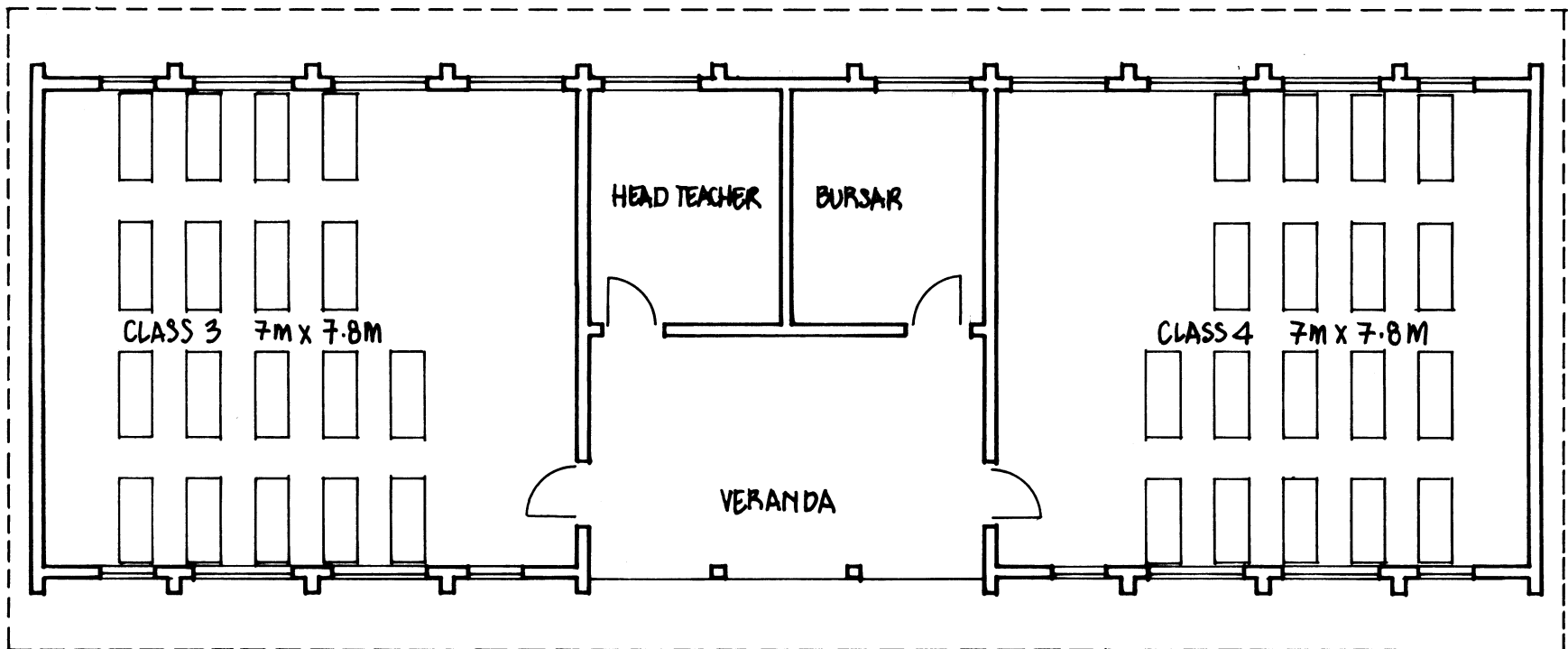
TRADITIONAL BUILDING FLOOR PLAN SCALE 1:100

FIG 7: COMMUNITY SCHOOLS: TRADITIONAL + SEMI-PERMANENT CONSTRUCTION



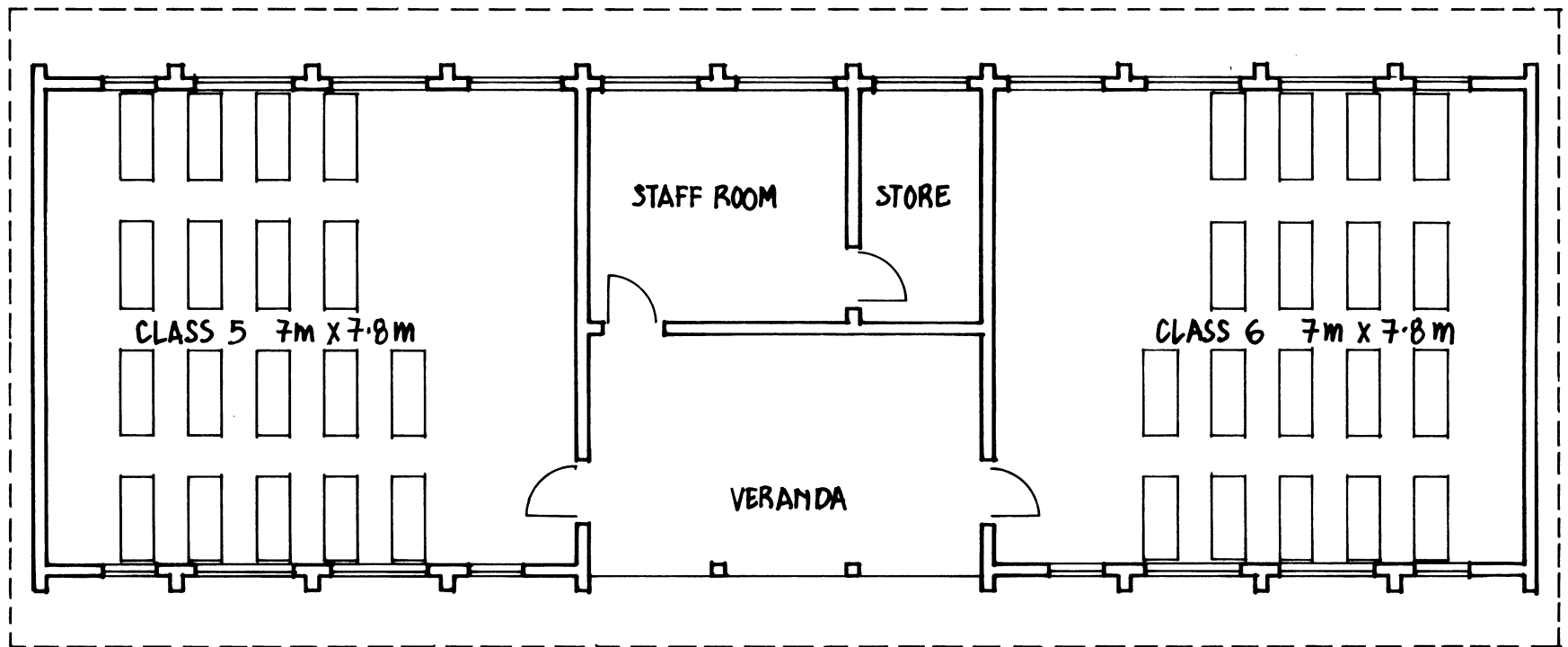
AREA 54.6 m^2 $1.51 \text{ m}^2/\text{PUPIL}$ SCALE 1:30

FIG 8: PRIMARY SCHOOL: STANDARD CLASSROOM LAYOUT



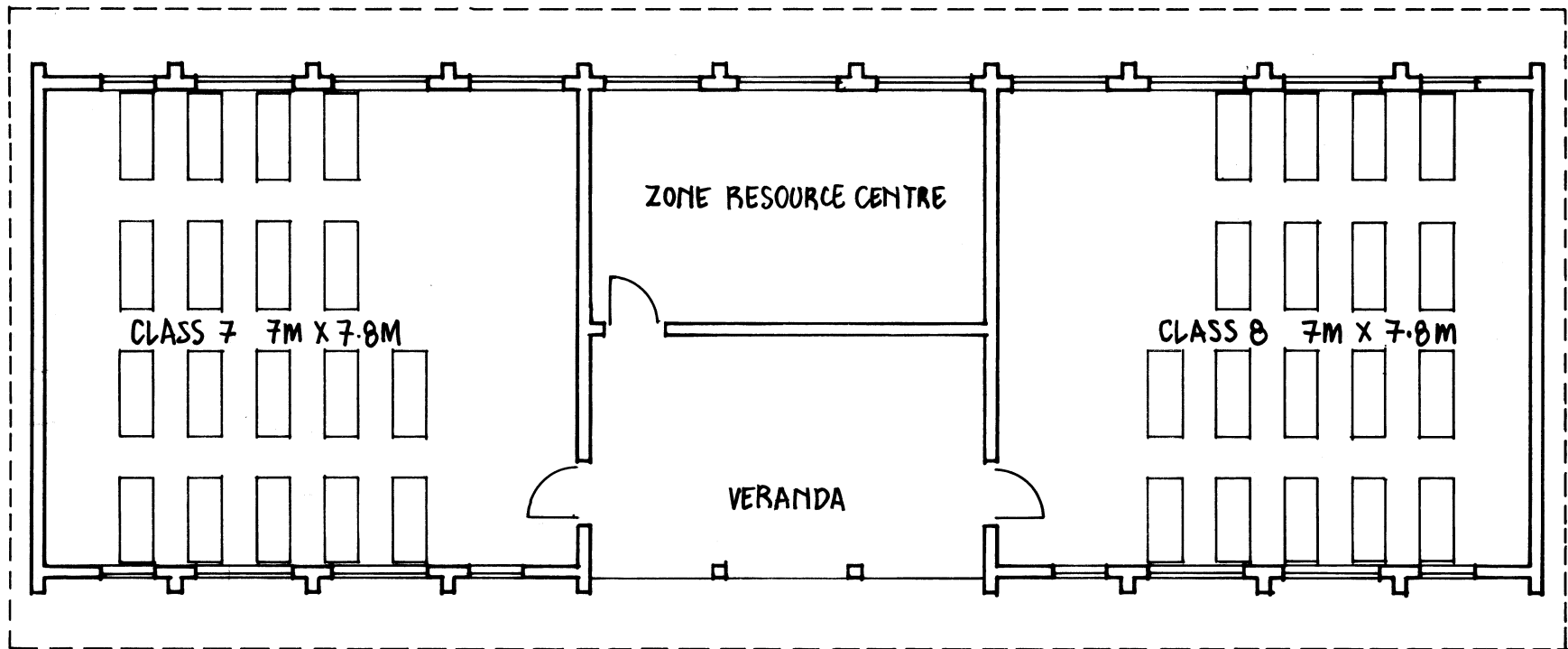
FLOOR PLAN SCALE 1:100

FIG 9: PRIMARY SCHOOL: CLASSROOMS 3+4



FLOOR PLAN SCALE 1:100

FIG 10: PRIMARY SCHOOL: CLASSROOMS 5+6



FLOOR PLAN SCALE 1:100

FIG 11: PRIMARY SCHOOL: CLASSROOMS 7+8

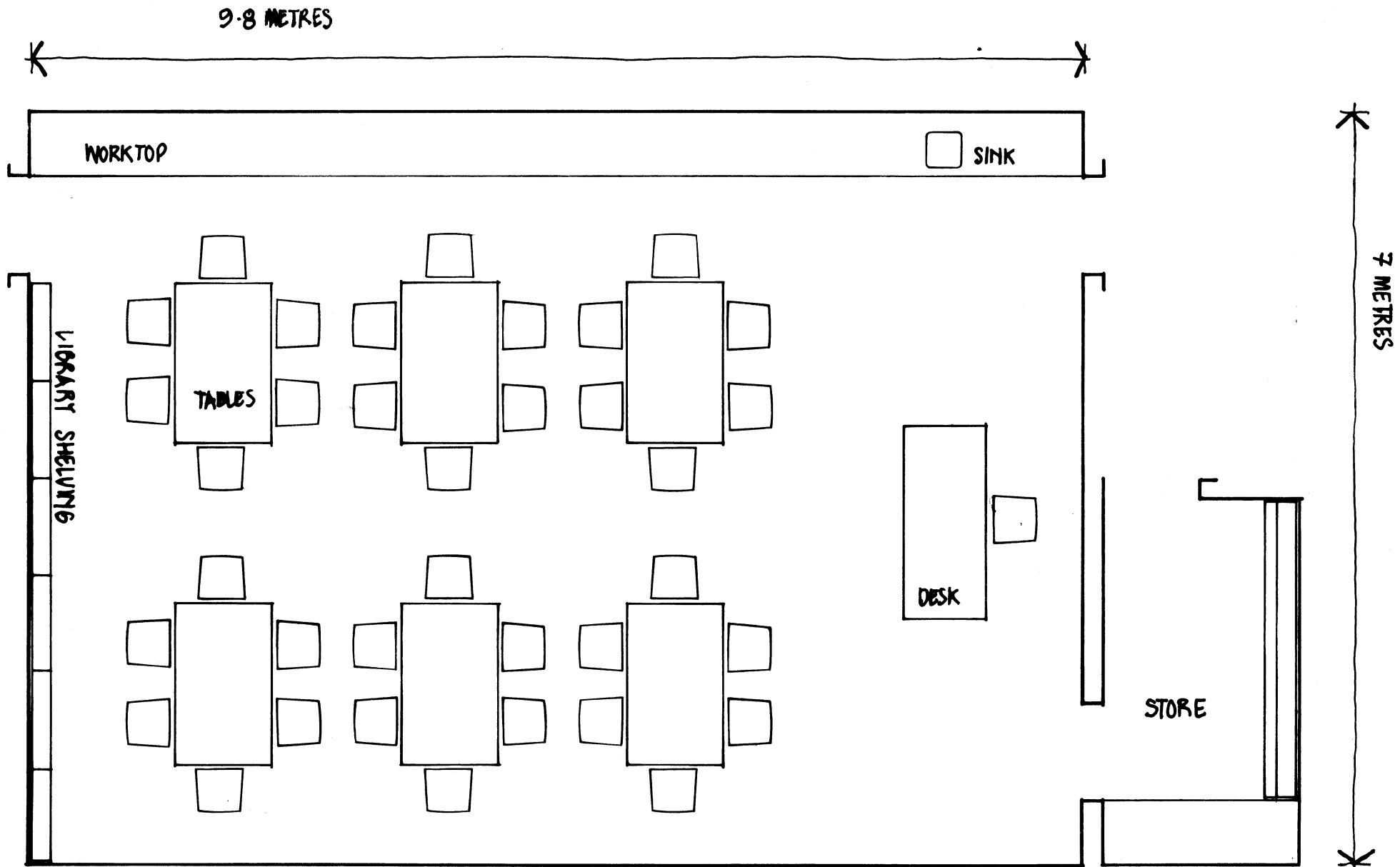
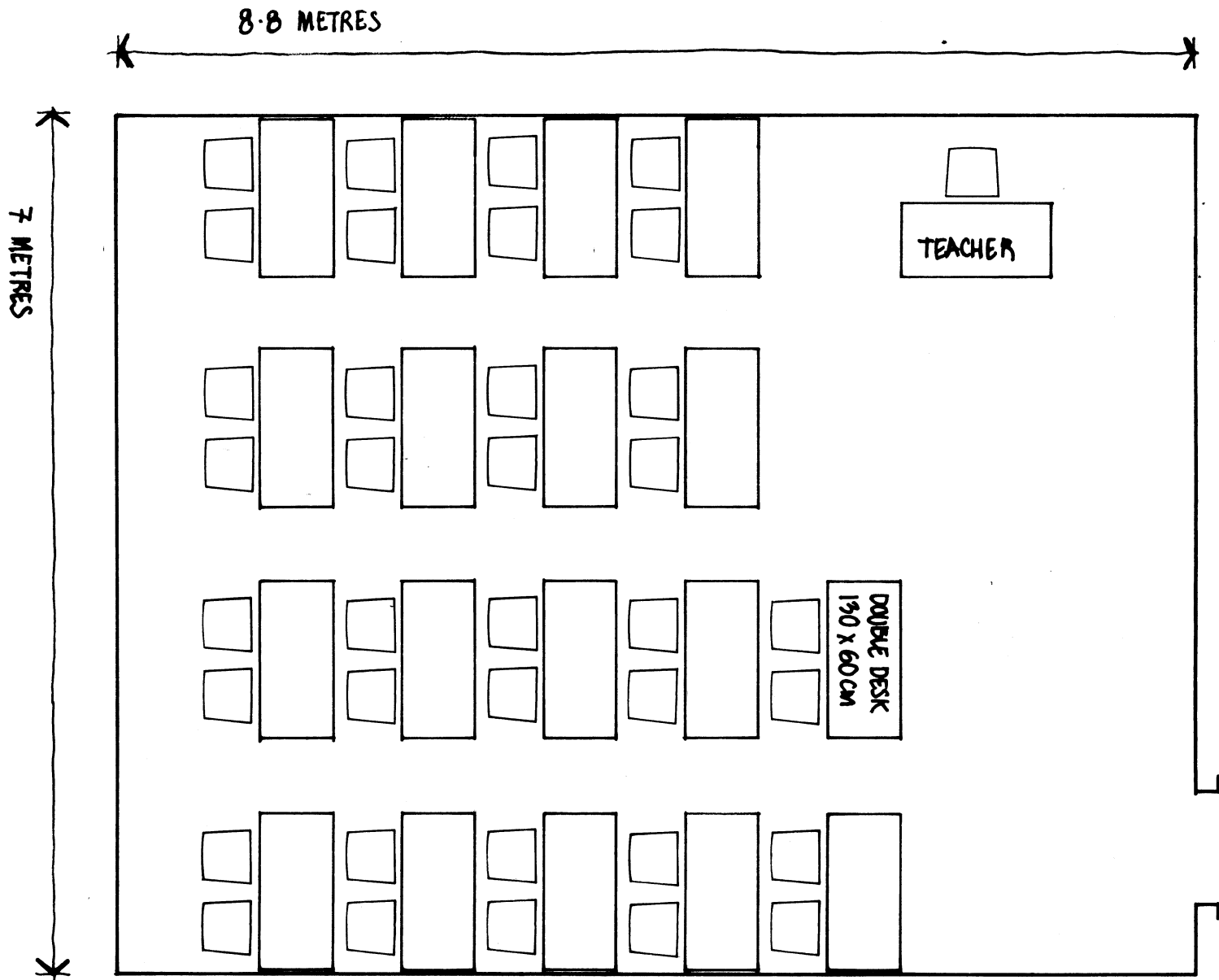
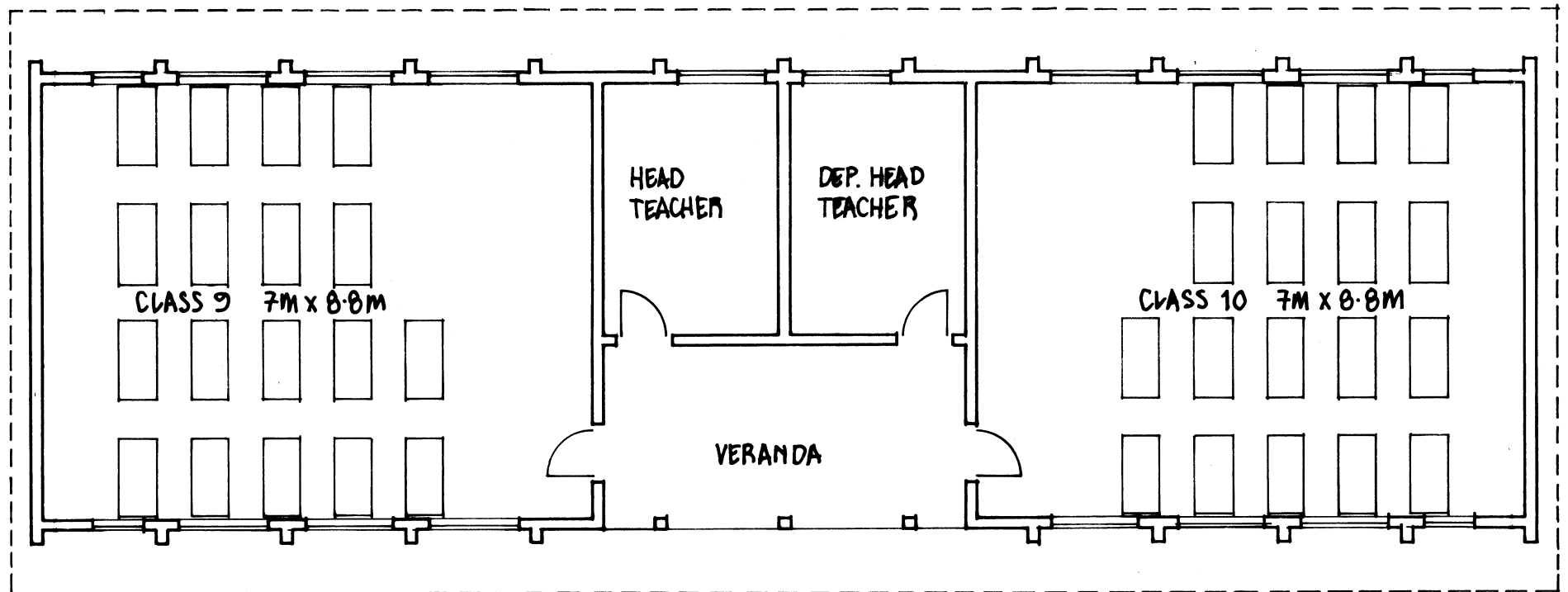


FIG 12: PRIMARY SCHOOL; MULTI-PURPOSE ROOM + OFFICE



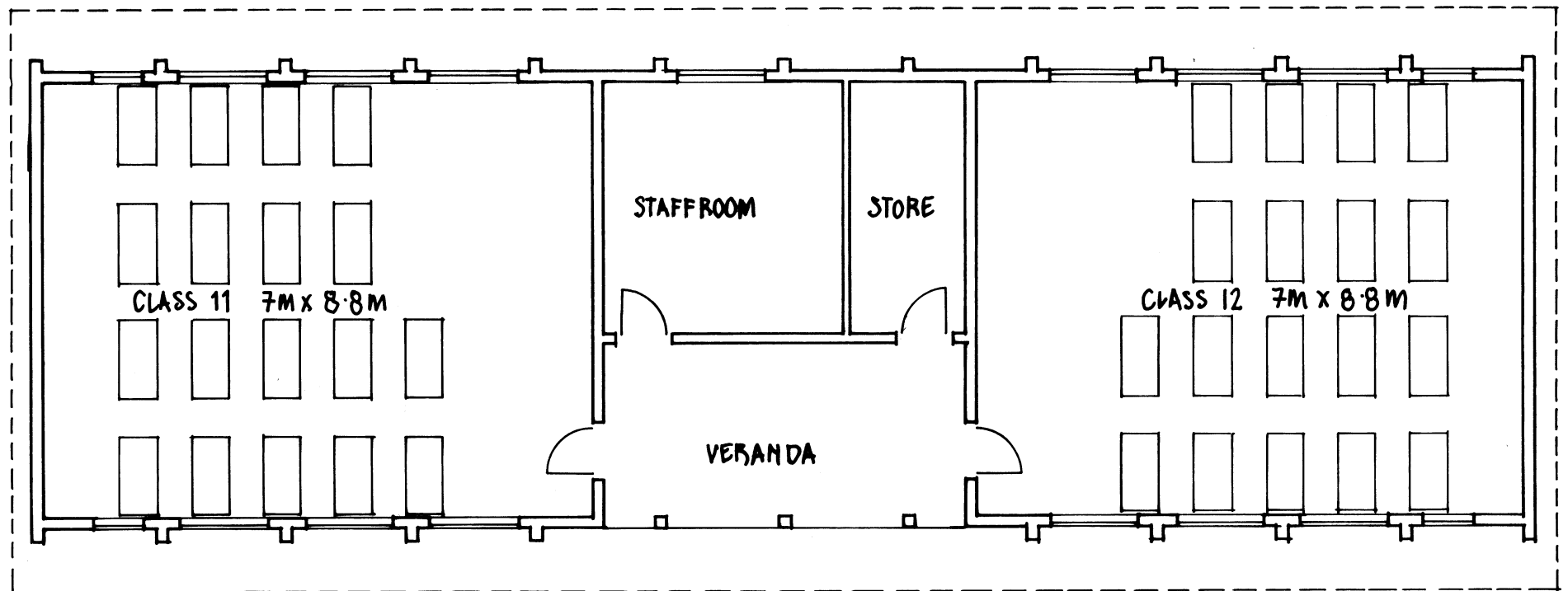
AREA 61.6 m^2 $1.71 \text{ m}^2 / \text{PUPIL}$ SCALE 1:50

FIG 13: PROVINCIAL HIGH SCHOOL: STANDARD CLASS ROOM LAYOUT

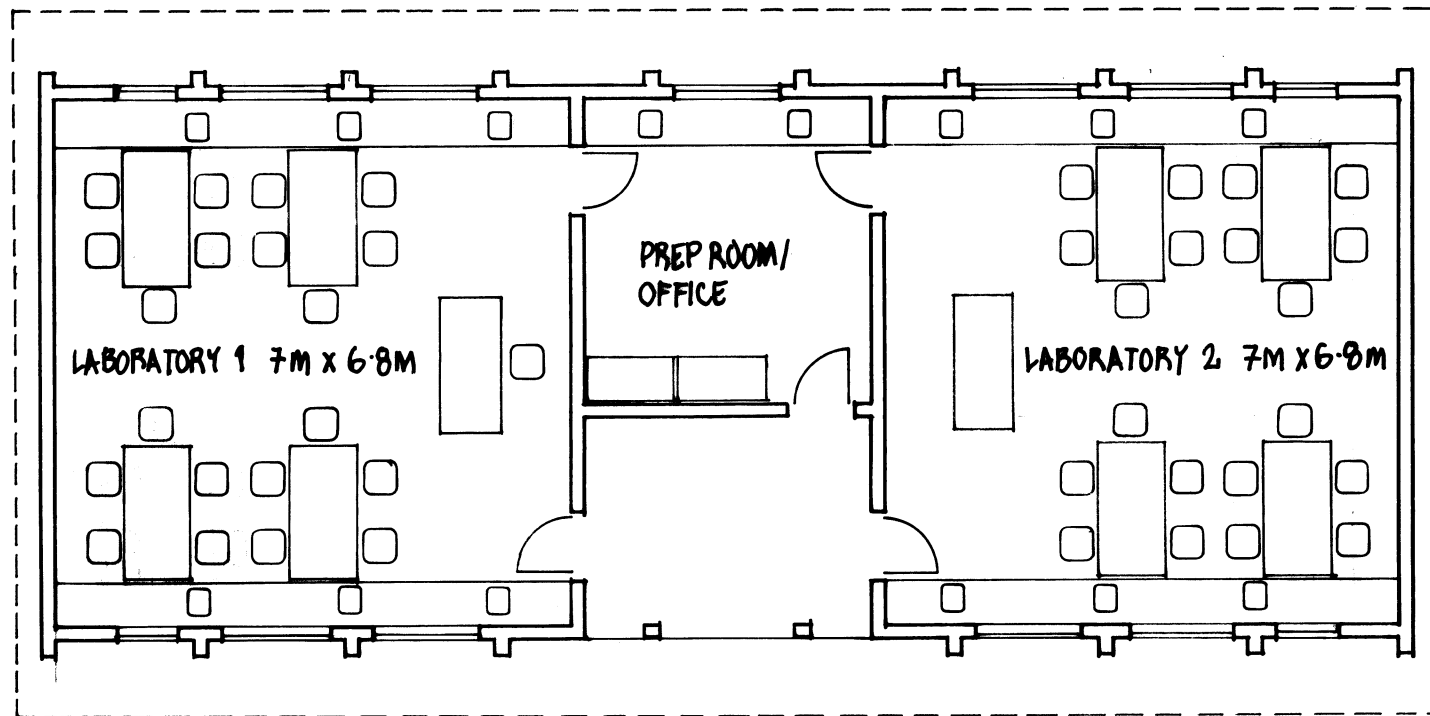


FLOOR PLAN SCALE 1:100

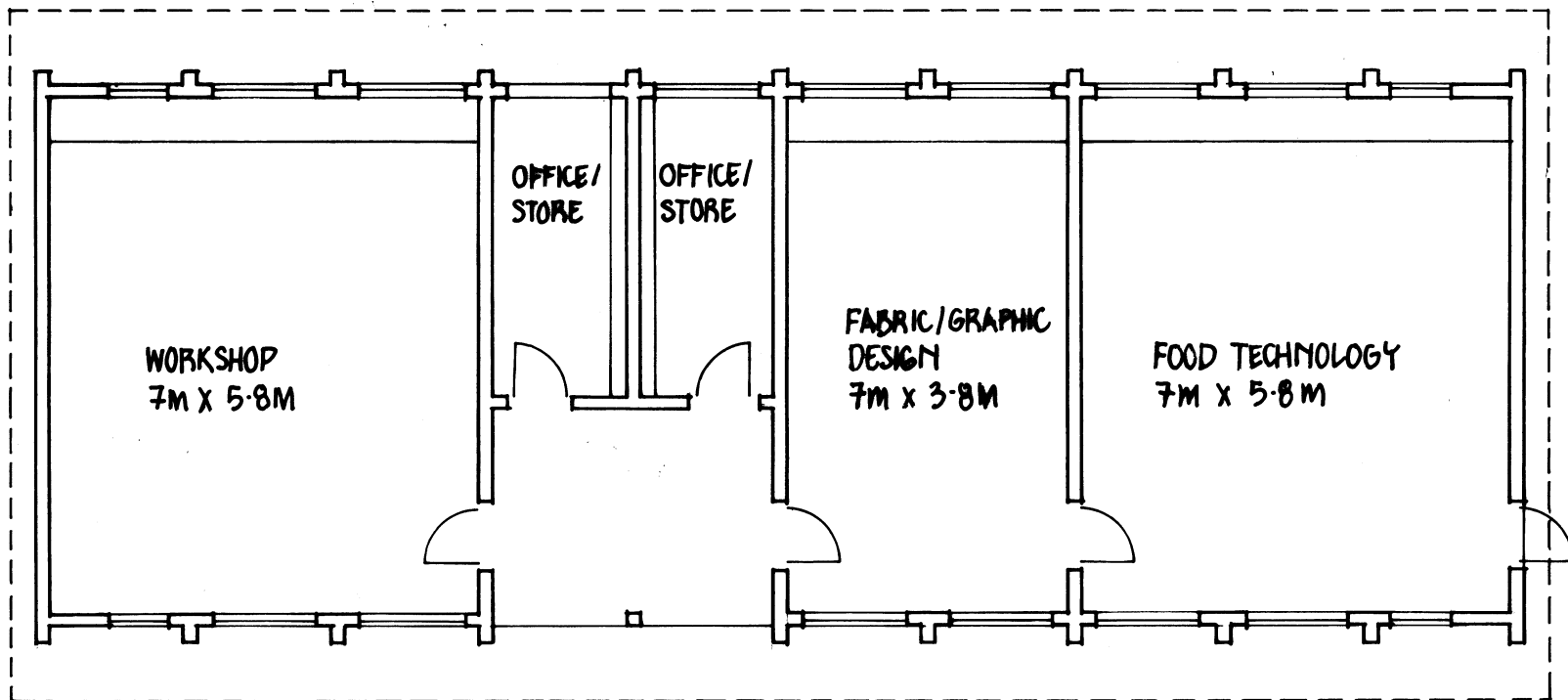
FIG 14: PROVINCIAL HIGH SCHOOL: GENERAL CLASSROOMS



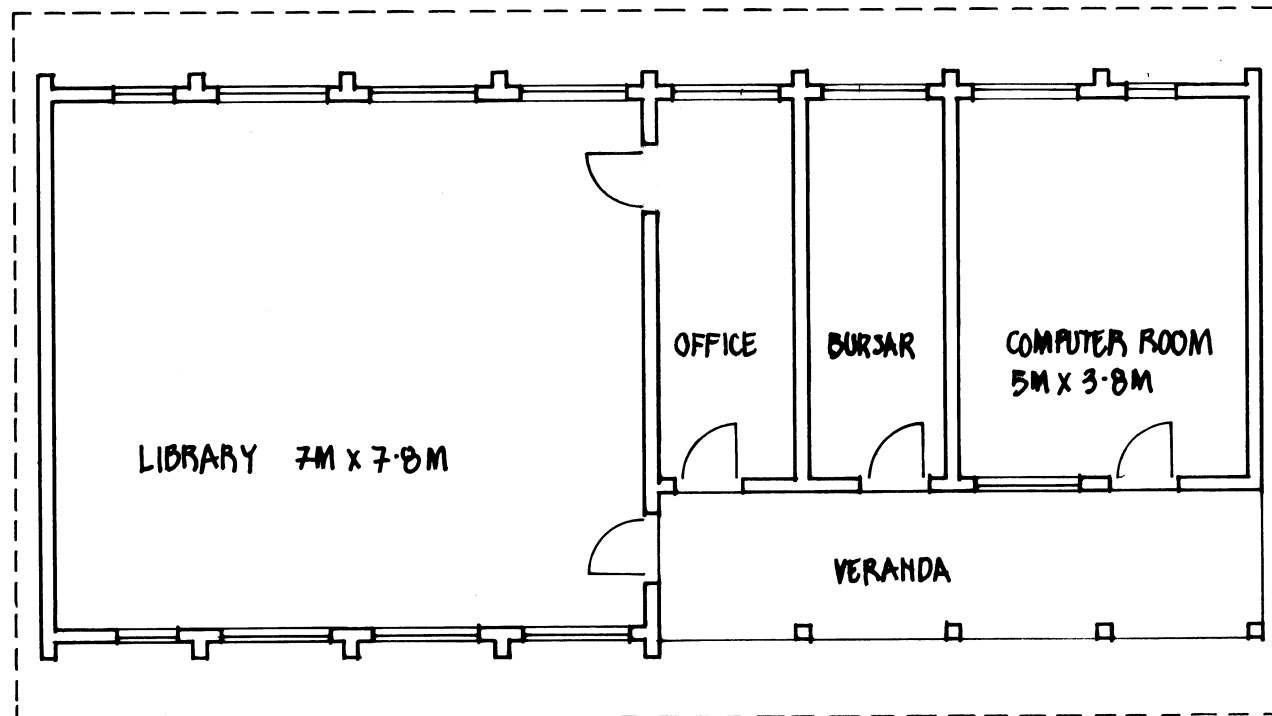
FLOOR PLAN SCALE 1:100
FIG 15: PROVINCIAL HIGH SCHOOL : GENERAL CLASSROOMS



FLOOR PLAN SCALE 1:100
FIG 16: PROVINCIAL HIGH SCHOOL: LABORATORIES

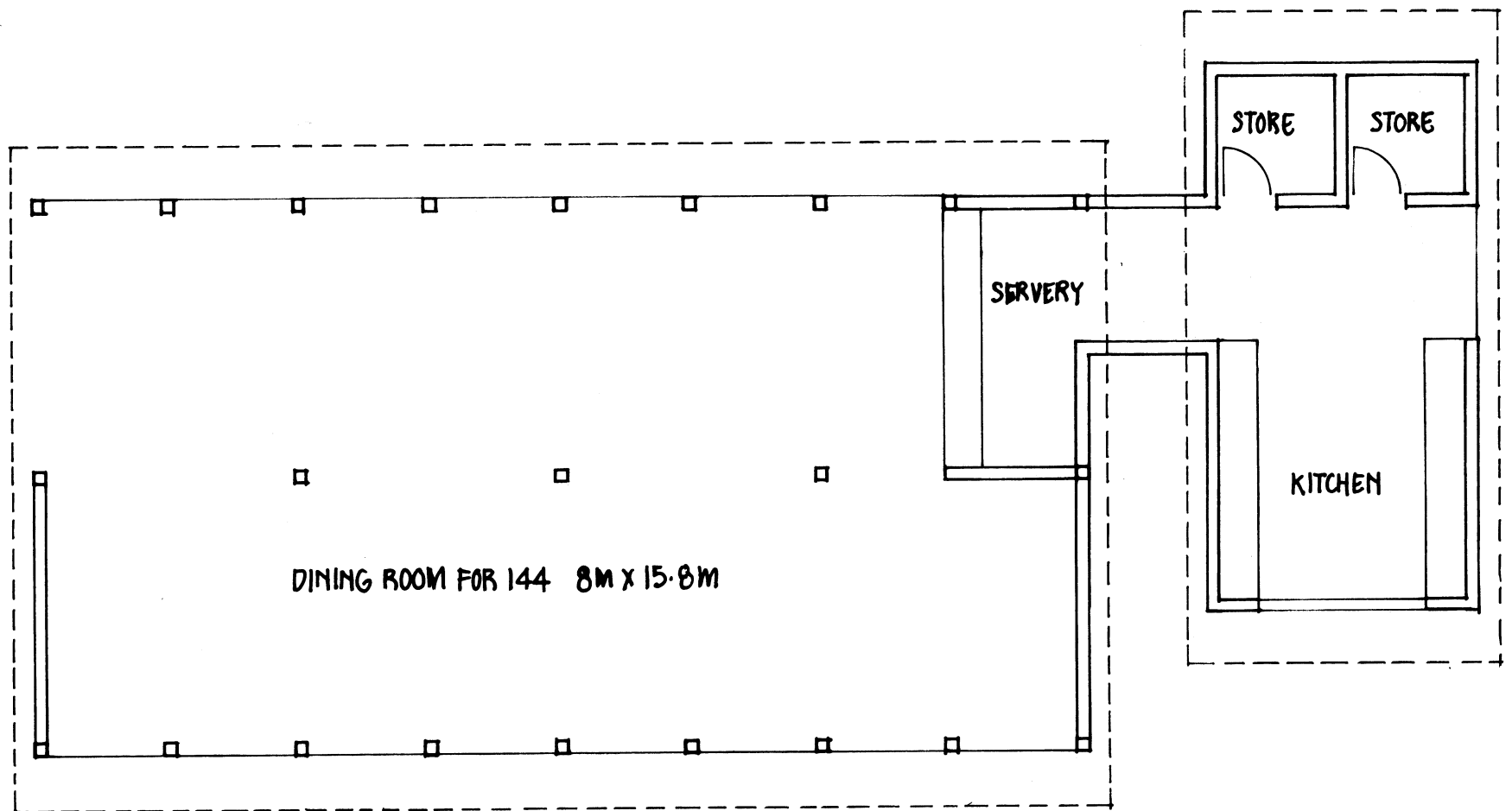


FLOOR PLAN SCALE 1:100
FIG 17: PROVINCIAL HIGH SCHOOL: TECHNOLOGY UNIT



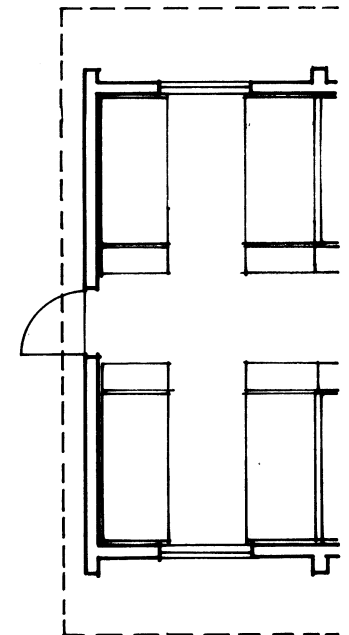
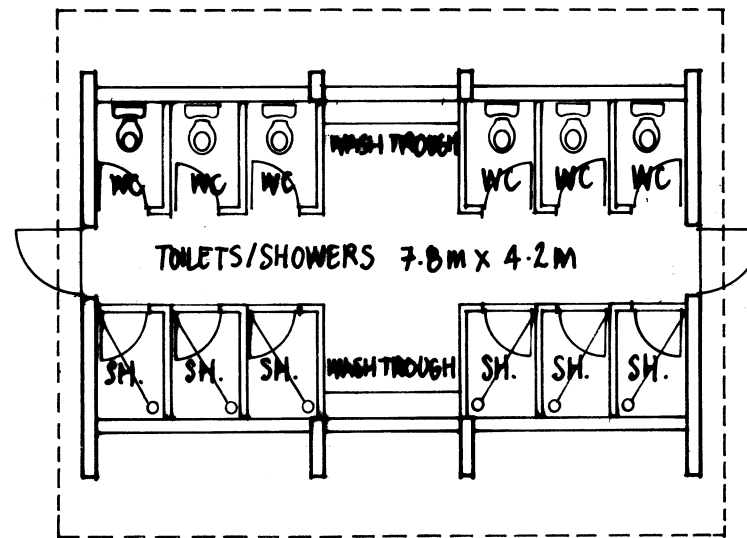
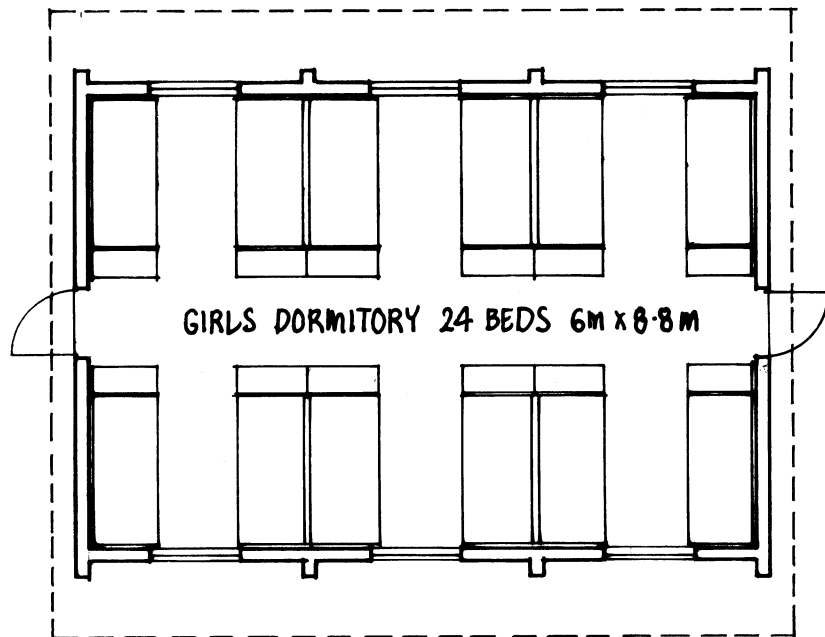
FLOOR PLAN SCALE 1:100

FIG 18: PROVINCIAL HIGH SCHOOL: LIBRARY + COMPUTER ROOM



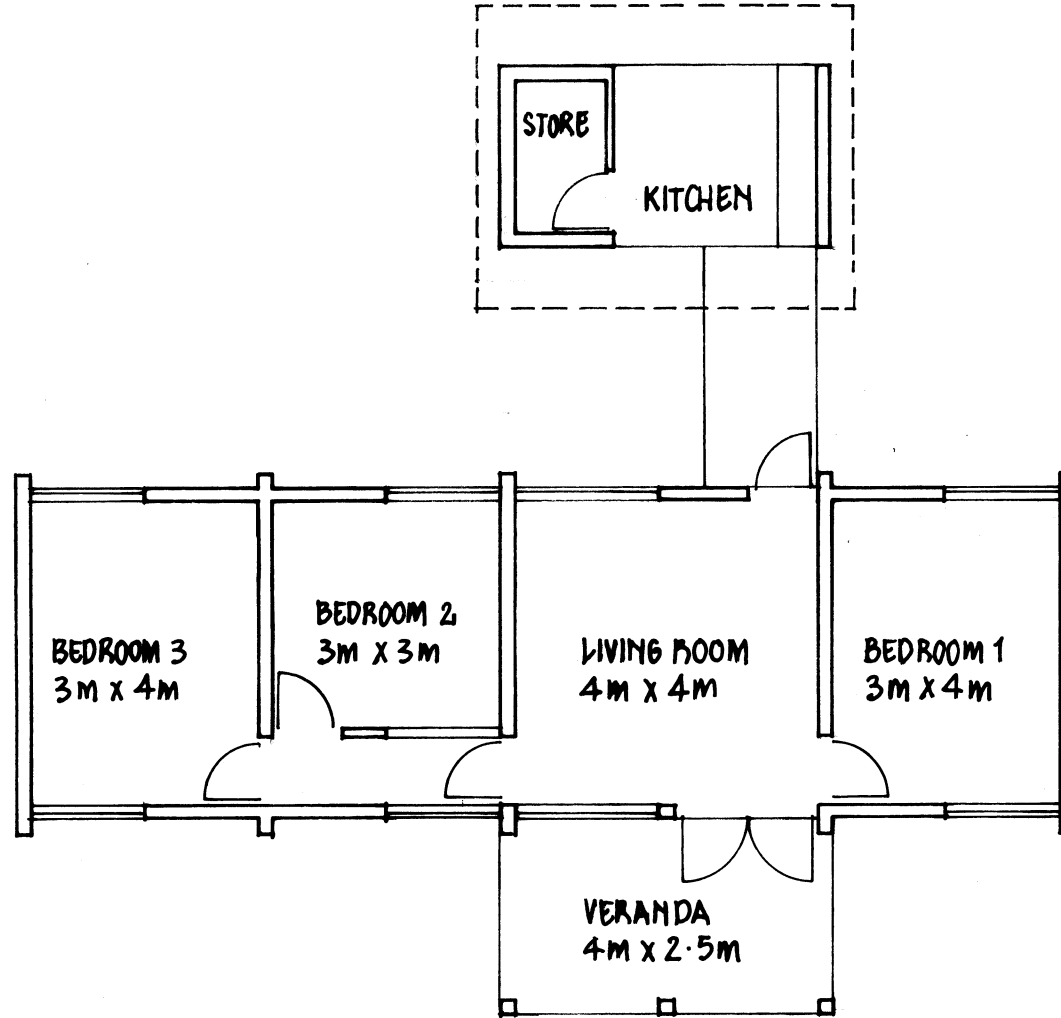
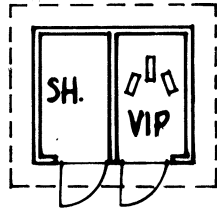
FLOOR PLAN SCALE 1:100

FIG 19: PROVINCIAL HIGH SCHOOL: DINING ROOM + KITCHEN



FLOOR PLAN SCALE 1:100

FIG 20: PROVINCIAL HIGH SCHOOL: DORMITORY/TOILETS/SHOWERS



FLOOR PLAN SCALE 1:100

FIG 22: PROVINCIAL HIGH SCHOOL: HEAD TEACHERS HOUSE