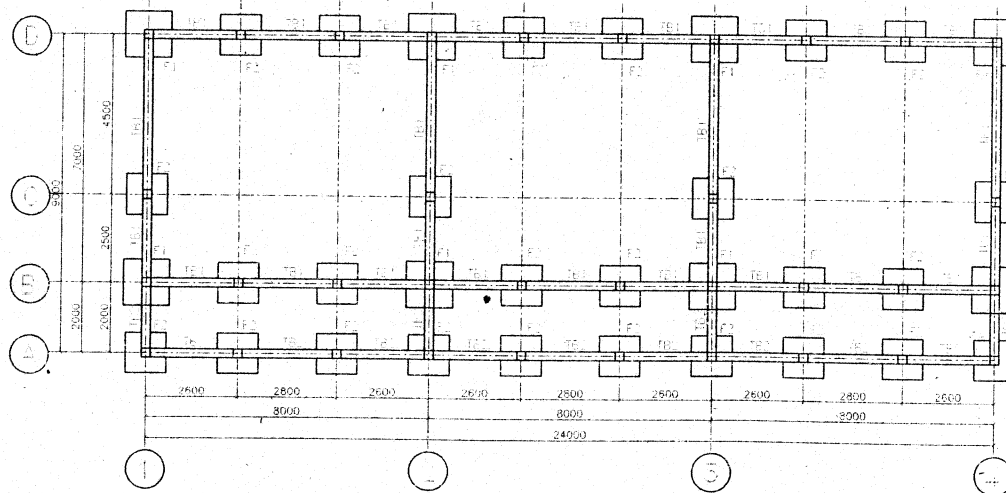


NOTE:	
C1	250 x 250
C2	250 x 250
Thick Slab	120 mm

GROUND SLAB AND COLUMN PLAN

SCALE 1 : 150

NOTE: SECTION A-A SEE DWG No.S-06





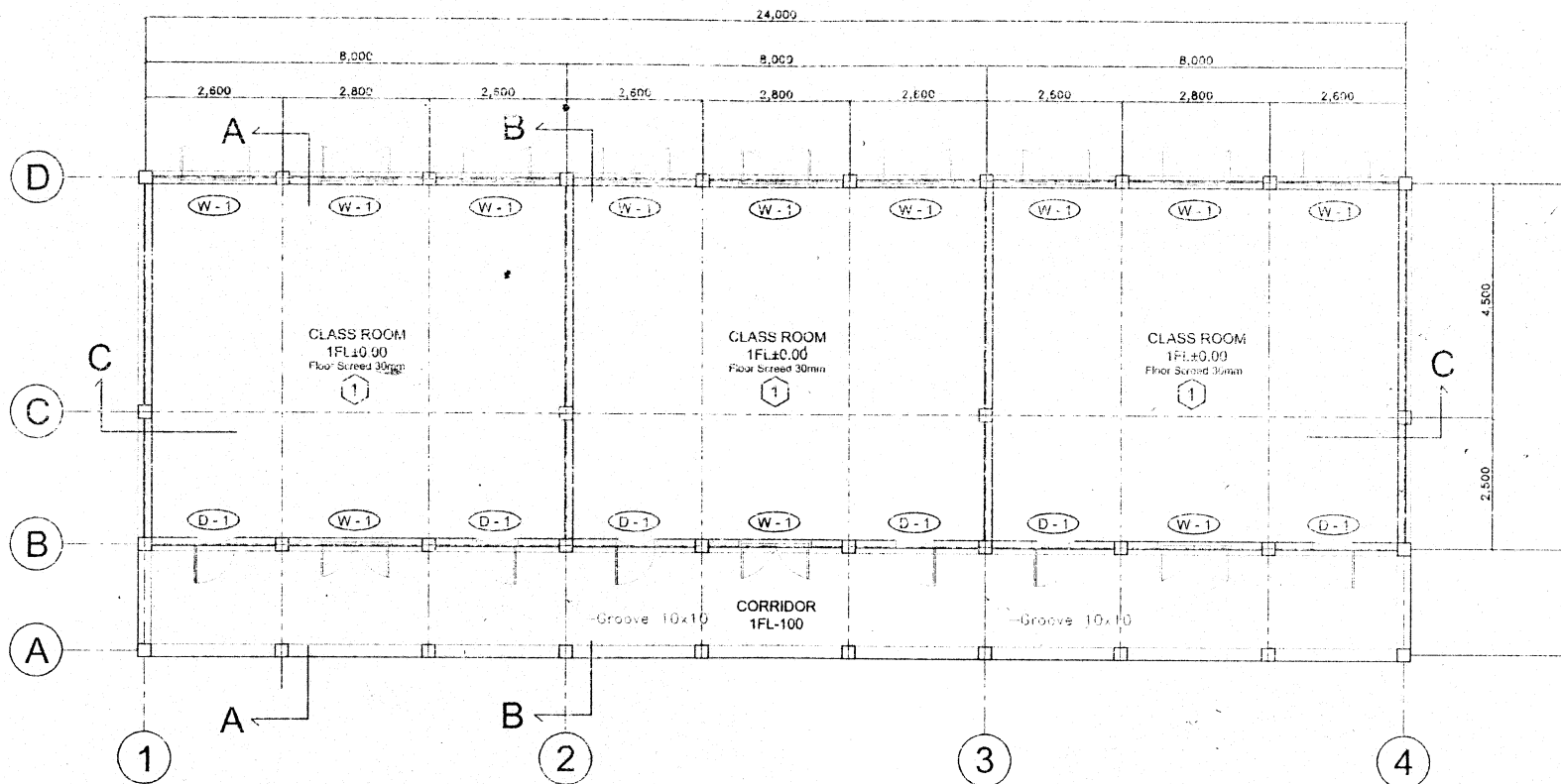
NOTE:	
F1	1300x1300
F2	1150x1150
TB1	250x550
TB2	250x450

FOUNDATION PLAN

SCALE 1 : 150

*SLAB REINFORCED
WITH 6φmm @ 150mm c/c
both ways.*

PROJECT Object for Construction of Additional Classrooms for 24 Schools (Phase II) (Construction Work) in The Federal Republic of Nigeria	LOCATION No. 47 KAWAJI JIGIRYA PRIMARY SCHOOL (NASSARAWA LOCAL GOVERNMENT AREA) & No.42 BAGAUDA PRIMARY SCHOOL (IBEBEJI LOCAL GOVERNMENT AREA)	CLIENT  JAPAN INTERNATIONAL COOPERATION AGENCY	CONSULTANTS  YACHIO ENGINEERING CO.,LTD.	DRAWING TITLE FOUNDATION PLAN	DRG NO. S-04
	CHECKED BY: KENJI OHARA		APPROVED BY: TOKIO SUZUKI		DATE: Dec 2009



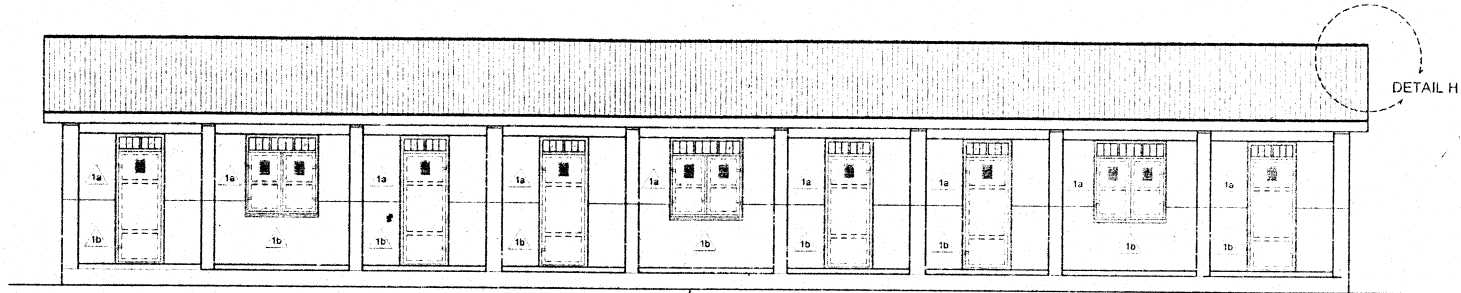
GROUND FLOOR PLAN

SCALE 1:100

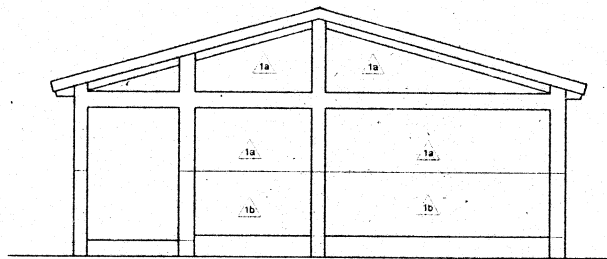
Note: 1FL±0.00=GL+400mm

$24 \times 9.15 = 219.6 \text{ m}^2$
 $1 \text{ room (gross)} = 7.85 \times 9.15$
 $= 71.83 \text{ m}^2$

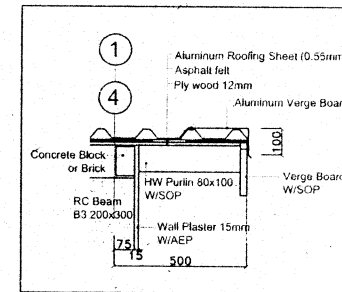
PROJECT	LOCATION	CLIENT	CONSULTANTS	DRAWING TITLE	DEG. NO.
The Project for Construction of Additional Classrooms for Primary Schools (Phase II), Trial Construction Work in The Federal Republic of Nigeria	No. 47 KAWAJI JIGIRYA PRIMARY SCHOOL (NASSARAWA LOCAL GOVERNMENT AREA) & No. 42 BAGAUDA PRIMARY SCHOOL (BIBELI LOCAL GOVERNMENT AREA)	JICA JAPAN INTERNATIONAL COOPERATION AGENCY	YEO YACHIYO ENGINEERING CO., LTD.	GROUND FLOOR PLAN	505
				CHECKED BY: KENJI CHIARA	APPROVED BY: TOKIO SUZUKI
					Scale: 1:100
					DATE: Oct. 2007



FRONT ELEVATION
SCALE 1 : 100



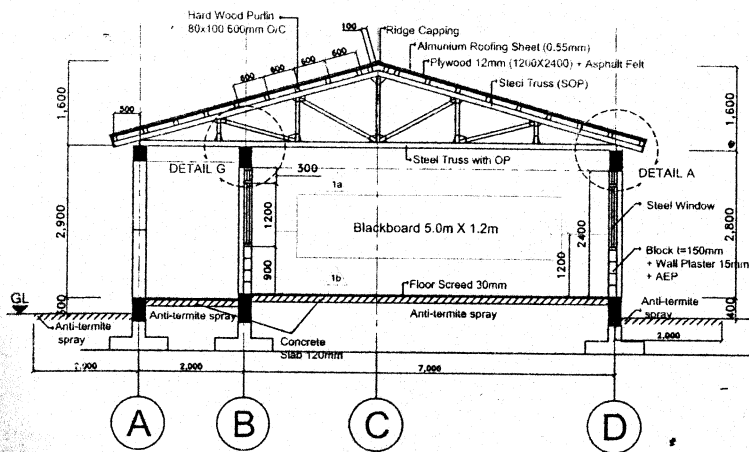
SIDE ELEVATION
SCALE 1 : 100



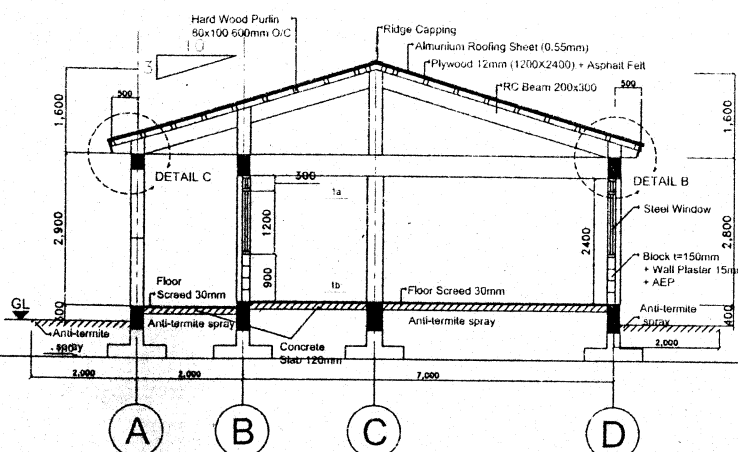
DETAIL H
SCALE 1 : 20

LEGEND	
1a	Wall Plaster (t=15mm) + AEP (Exterior Paint) : Light Color
1b	Wall Plaster (t=15mm) + AEP (Exterior Paint) : Dark Color

PROJECT	LOCATION	CLIENT	CONSULTANTS	DRAWING TITLE	DRG NO :
The Project for Construction of Additional Classrooms for Primary Schools (Phase II) (Trial Construction Work) in The Federal Republic of Nigeria	No. 47 KAWAJI JIGIRYA PRIMARY SCHOOL (NASSARAWA LOCAL GOVERNMENT AREA) & No.42 BAGAUDA PRIMARY SCHOOL (BEBEJI LOCAL GOVERNMENT AREA)	JAPAN INTERNATIONAL COOPERATION AGENCY	YACHIO ENGINEERING CO.,LTD.	FRONT & LIGHT ELEVATION	A-06
				CHECKED BY : KENJI OHARA	APPROVED BY : TOKIO SUZUKI
				Scale: 1:100	DATE : Dec 2009



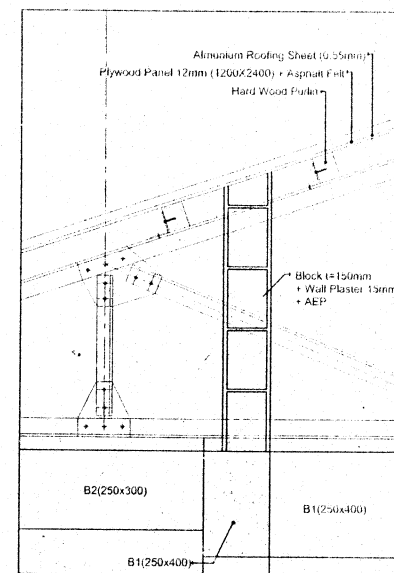
SECTION A-A
SCALE 1 : 100



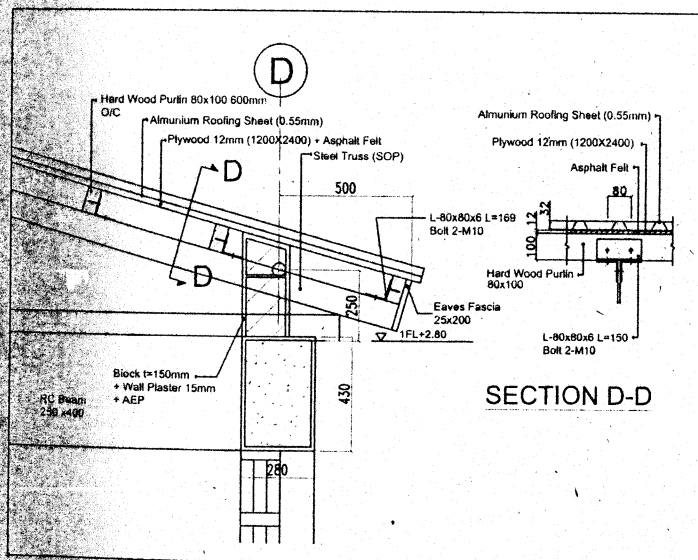
SECTION B-B
SCALE 1 : 100

LEGEND	
1a	Plaster + Trowel for Light Paint Finish (AEP)
1b	Plaster + Trowel for Dark Paint Finish (AEP)

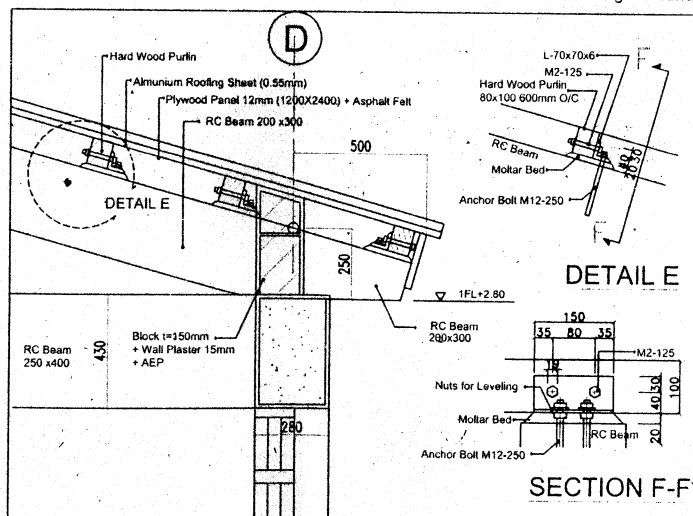
* Anti-termite shall be sprayed to all backfilling and filling soil surface



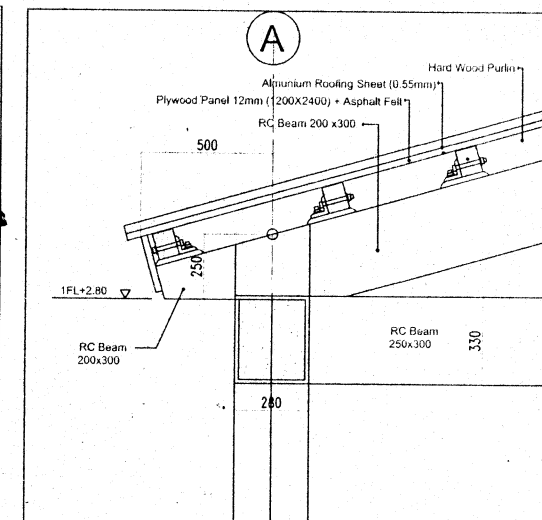
DETAIL G
SCALE 1 : 20



DETAIL A
SCALE 1 : 20

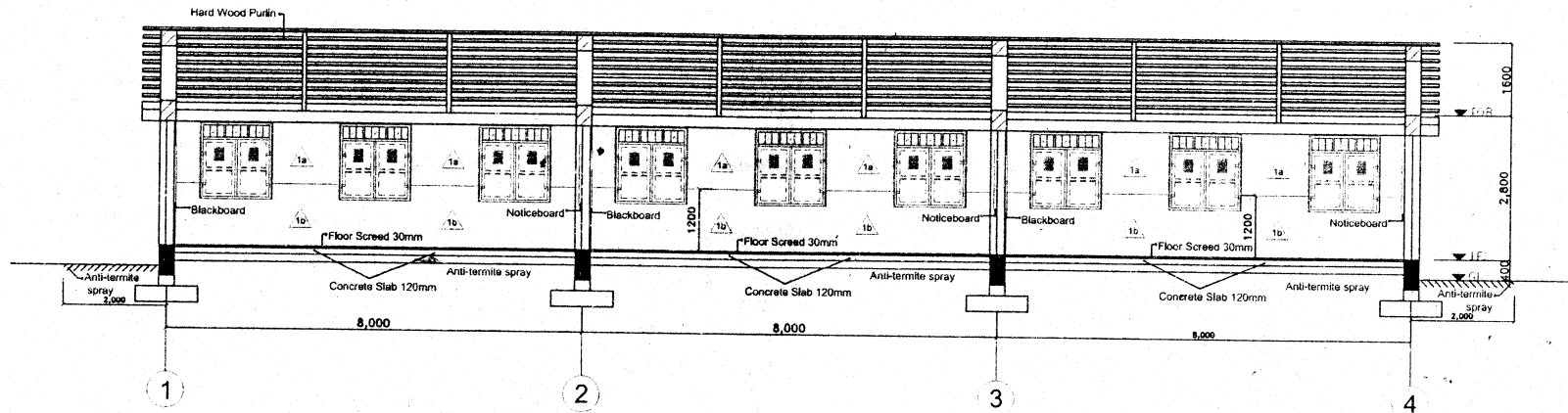


DETAIL B
SCALE 1 : 20



DETAIL C
SCALE 1 : 20



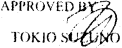
PROJECT Project for Construction of Additional Classrooms for Primary Schools (Phase II) (Civil Construction Work) in The Federal Republic of Nigeria	LOCATION No. 47 KAWAJI JIGIRYA PRIMARY SCHOOL (NASSARAWA LOCAL GOVERNMENT AREA) & No.42 BAGAUDA PRIMARY SCHOOL (BEBEJI LOCAL GOVERNMENT AREA)	CLIENT JAPAN INTERNATIONAL COOPERATION AGENCY	CONSULTANTS YACHIYO ENGINEERING CO.,LTD.	DRAWING TITLE SECTION A-A, B-B & DETAIL		DRG NO: A-07
				CHECKED BY: KENJI OHARA	APPROVED BY: TOKIO SUZUKI	
				DATE: Dec 2009		

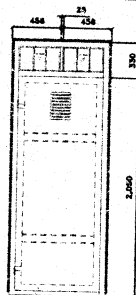
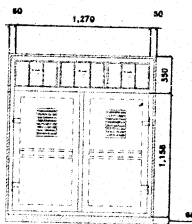


SECTION C-C
SCALE 1:100

LEGEND	
1a	Wall Plaster (t=15mm) + AEP : Light Color
1b	Wall Plaster (t=15mm) + AEP : Dark Color

* Anti-termite shall be sprayed to all backfilling and filling soil surface



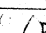
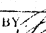
SUBJECT Repair for Construction of Additional Classrooms for Primary Schools (Phase II) (Construction Work) in The Federal Republic of Nigeria	LOCATION No. 47 KAWAJI JIGIRYA PRIMARY SCHOOL (NASSARAWA LOCAL GOVERNMENT AREA) & No.42 BAGAUDA PRIMARY SCHOOL (BEBEJI LOCAL GOVERNMENT AREA)	CLIENT  JAPAN INTERNATIONAL COOPERATION AGENCY	CONSULTANTS  YACHIYO ENGINEERING CO.,LTD.	DRAWING TITLE SECTION C-C		DRG NO : A-08
			CHECKED BY : KENJI OHARA	APPROVED BY :  TOKIO SUZUMO	Scale: 1:100	DATE : Dec 2009

Mark	$\frac{D}{1}$	$\frac{W}{1}$
Size		
Door	Steel Plate	Steel Plate
Frame	Ditto	Ditto
Glass	Float Glass (t=5mm)	Float Glass (t=5mm)
Paint	Synthetic Resin Paint	Synthetic Resin Paint

DOOR & WINDOW SCHEDULE

SCALE NTS

Reference Only

PROJECT Project for Construction of Additional Classrooms for Primary Schools (Phase II) (Additional Construction Work) in The Federal Republic of Nigeria	LOCATION No. 47 KAWAJI JIGIRYA PRIMARY SCHOOL (NASSARAWA LOCAL GOVERNMENT AREA) & No.42 BAGAUDA PRIMARY SCHOOL (BEBEJI LOCAL GOVERNMENT AREA)	CLIENT  JAPAN INTERNATIONAL COOPERATION AGENCY	CONSULTANTS  YACHIYO ENGINEERING CO.,LTD.	DRAWING TITLE DOOR & WINDOW SCHEDULE	DRG NO: A-10
				CHECKED BY:  KENJI OHARA	APPROVED BY:  TOKIO SUZUKI